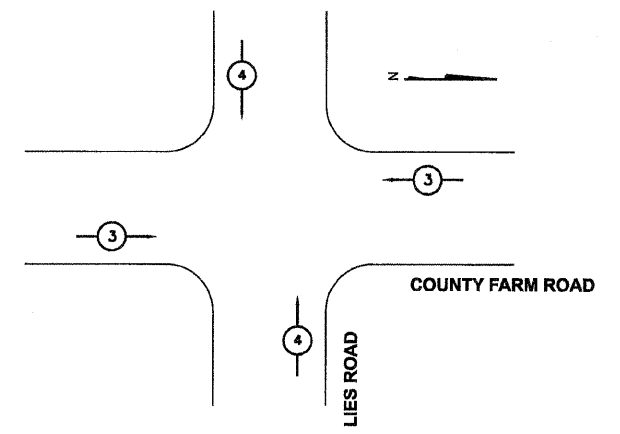
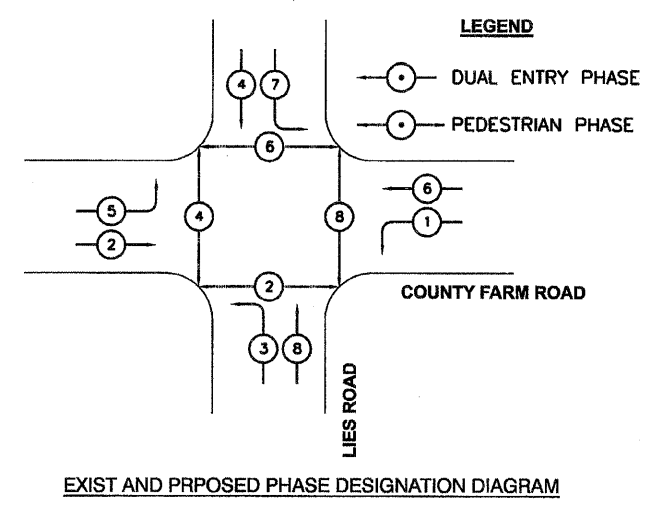
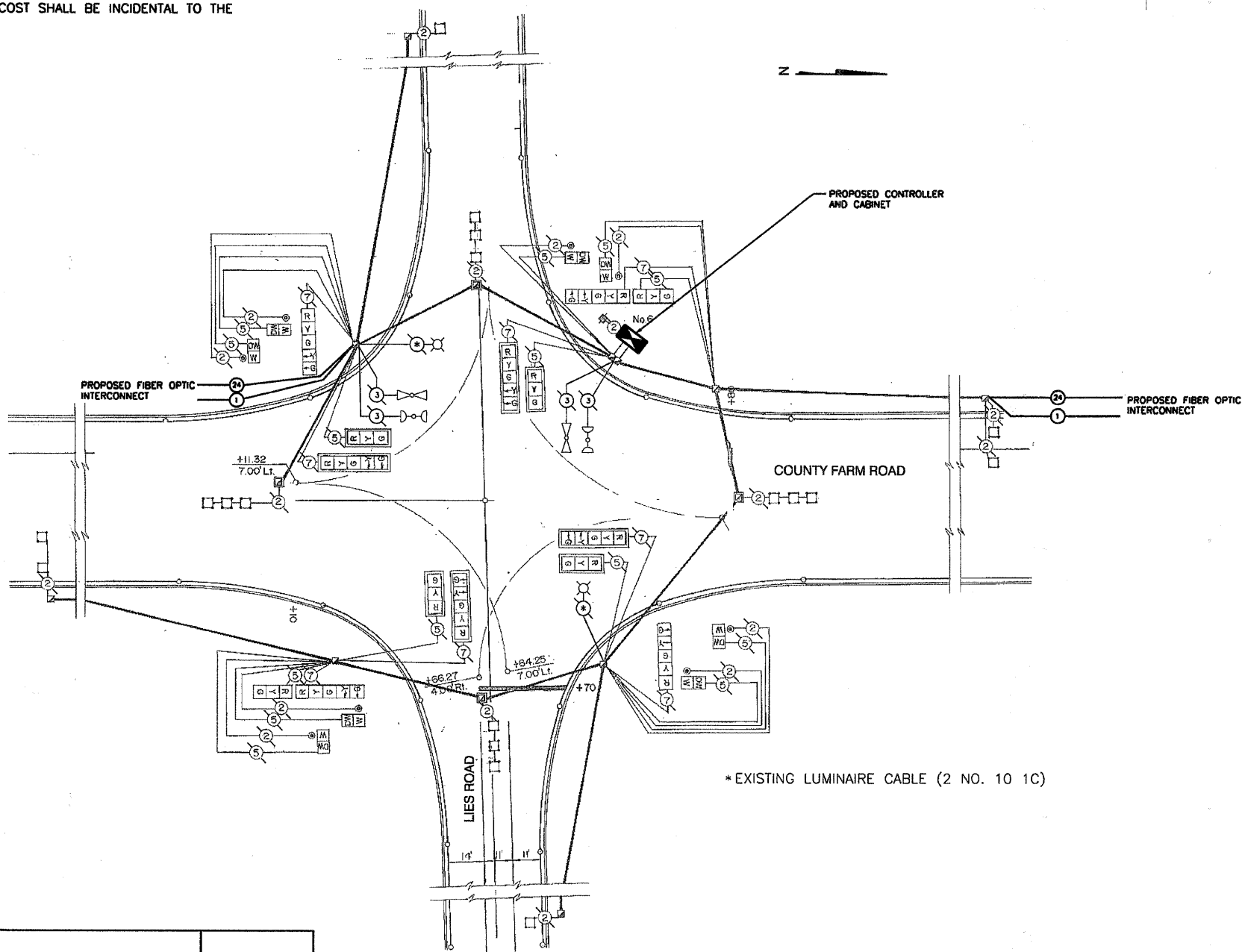


NOTE: EQUIPMENT SHALL BE PROVIDED TO CONTROL THE (2) 310 WATT LUMINAIRES MOUNTED ON THE COMBO POLES. EQUIPMENT SHALL INCLUDE A BREAKER BOX MOUNTED INSIDE THE CABINET. THE COST SHALL BE INCIDENTAL TO THE CONTROLLER AND CABINET.

CABLE PLAN



| PROPOSED EMERGENCY VEHICLE PREEPTORS | | |
|--------------------------------------|---|---|
| EMERGENCY VEHICLE PREEPTOR | 3 | 4 |
| MOVEMENT | ← | ↑ |

| DU PAGE COUNTY D.O.T TRAFFIC SIGNAL INSTALLATION ELECTRICAL SERVICE REQUIREMENTS | | | | | TOTAL WATTAGE |
|--|-----------|---------|-----|---------------|------------------|
| TYPE | NO. LAMPS | WATTAGE | | OPERATION (%) | |
| | | INCAND. | LED | | |
| RED BALL | 16 | 135 | 10 | 0.60 | 1296 |
| YELLOW BALL | 16 | 135 | 22 | 0.03 | 65 |
| GREEN BALL | 16 | 135 | 12 | 0.37 | 799 |
| RED ARROW | | 135 | 5 | 0.85 | |
| YELLOW ARROW | 8 | 135 | 10 | 0.02 | 22 |
| GREEN ARROW | 8 | 135 | 5 | 0.13 | 140 |
| PED - WALK | 8 | 90 | 5 | 0.05 | 36 |
| PED - DON'T WALK | 8 | 90 | 6 | 0.95 | 684 |
| CONTROLLER | 1 | 100 | | 1.00 | 100 |
| LUMINAIRE | 2 | 310 | | 0.50 | 310 |
| TOTAL= | | | | | 3452 |

SCHEDULE OF QUANTITIES

| | | | |
|----------|---|-------|------|
| 67100100 | MOBILIZATION | L SUM | 0.06 |
| 70102630 | TRAFFIC CONTROL AND PROTECTION, STANDARD 701601 | L SUM | 0.06 |
| 70102635 | TRAFFIC CONTROL AND PROTECTION, STANDARD 701701 | L SUM | 0.06 |
| 70102640 | TRAFFIC CONTROL AND PROTECTION, STANDARD 701801 | L SUM | 0.06 |
| 85000200 | MAINTENANCE OF EXISTING TRAFFIC SIGNAL INSTALLATION | EACH | 1 |
| 85700200 | FULL-ACTUATED CONTROLLER AND TYPE IV CABINET | EACH | 1 |
| 86400100 | TRANSCIEVER - FIBER OPTIC | EACH | 1 |
| 87900200 | DRILL EXISTING HANDHOLE | EACH | 2 |
| 88500100 | INDUCTIVE LOOP DETECTOR | EACH | 8 |
| 89501410 | RELOCATE EXISTING EMERGENCY VEHICLE PRIORITY SYSTEM, PHASING UNIT | EACH | 1 |
| 89502375 | REMOVE EXISTING TRAFFIC SIGNAL EQUIPMENT | EACH | 1 |
| X0325705 | RE-OPTIMIZE TRAFFIC SIGNAL SYSTEM, LEVEL 2 | EACH | 1 |

| REVISIONS | |
|-----------|------|
| NAME | DATE |
| | |
| | |
| | |
| | |
| | |

DUPAGE COUNTY DIVISION OF TRANSPORTATION
COUNTY FARM RD & LIES RD
 EXIST AND PROPOSED CABLE DIAGRAM,
 PHASING DIAGRAM AND SCHEDULE OF
 QUANTITIES

SCALE: NONE
 DATE: 4/23/10

DRAWN BY: TH
 DESIGNED BY: TH
 CHECKED BY: DAZ