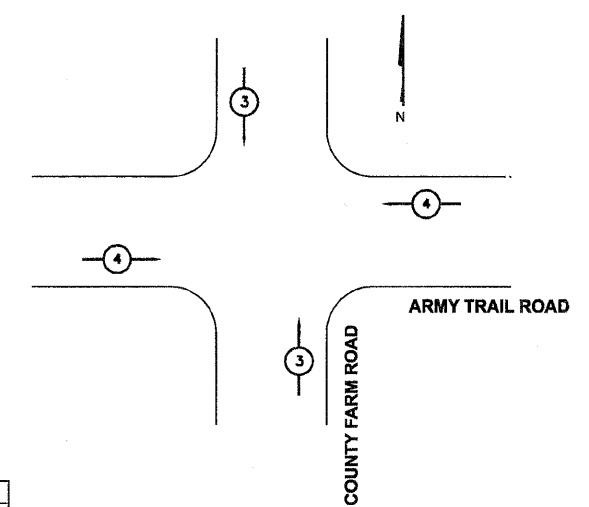
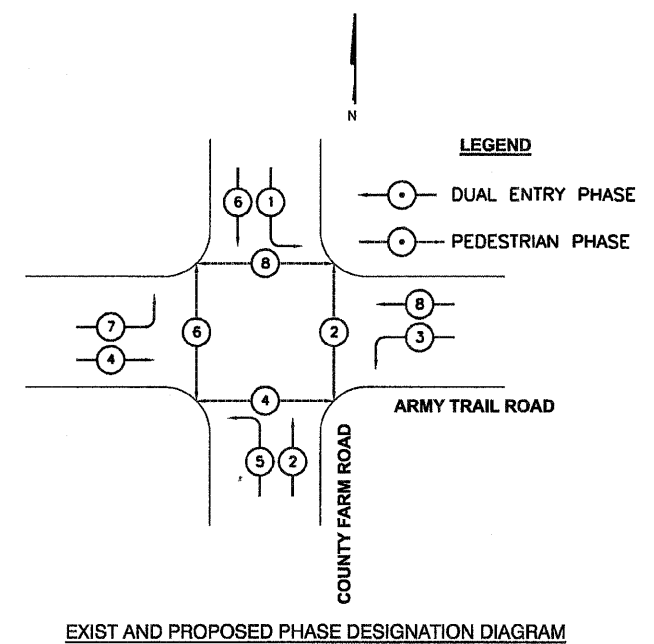
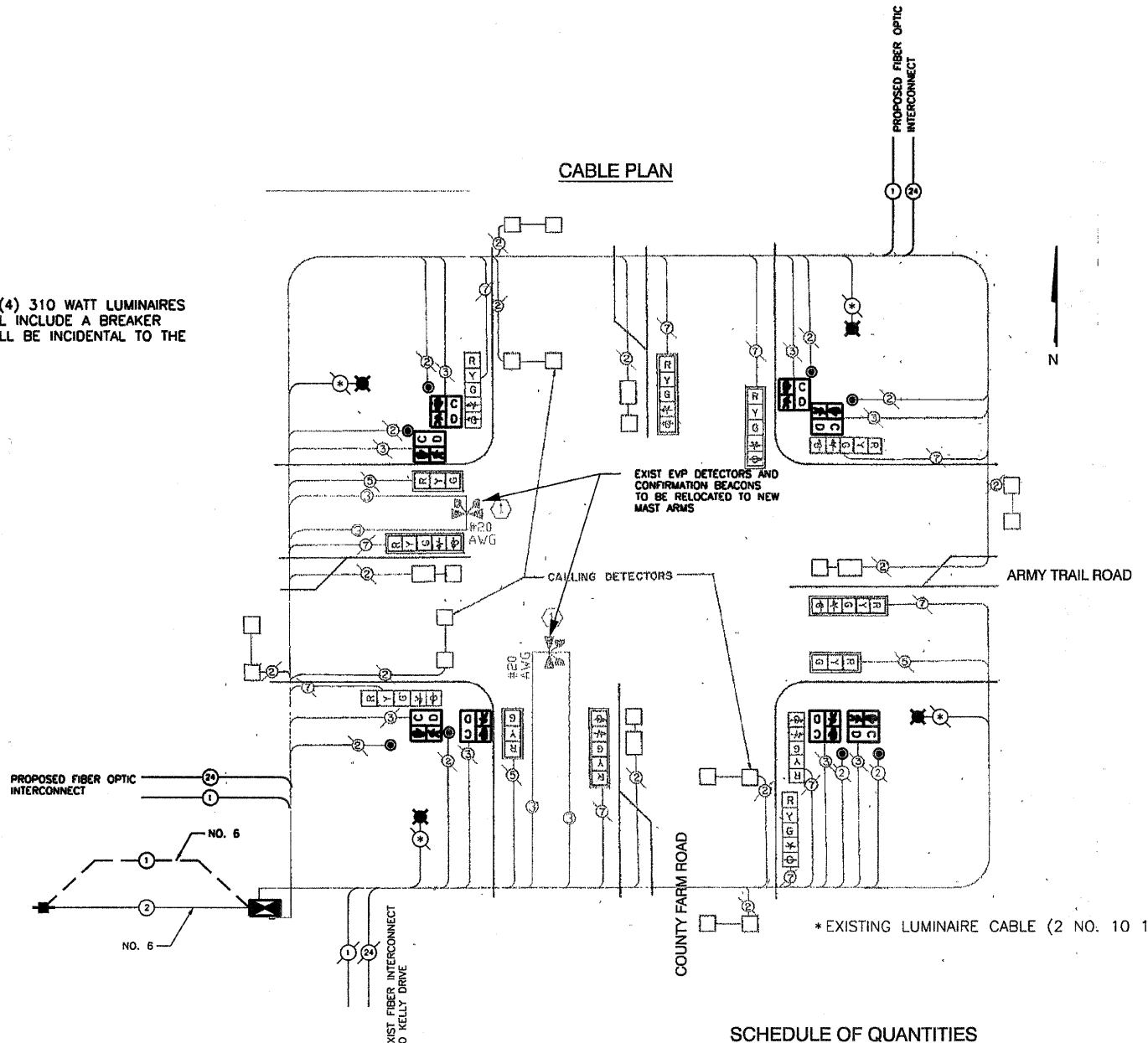


NOTE: EQUIPMENT SHALL BE PROVIDED TO CONTROL THE (4) 310 WATT LUMINAIRES MOUNTED ON THE COMBO POLES. EQUIPMENT SHALL INCLUDE A BREAKER BOX MOUNTED INSIDE THE CABINET. THE COST SHALL BE INCIDENTAL TO THE CONTROLLER AND CABINET.



SCHEDULE OF QUANTITIES

67100100	MOBILIZATION	L SUM	0.06
70102630	TRAFFIC CONTROL AND PROTECTION, STANDARD 701601	L SUM	0.06
70102635	TRAFFIC CONTROL AND PROTECTION, STANDARD 701701	L SUM	0.06
70102640	TRAFFIC CONTROL AND PROTECTION, STANDARD 701801	L SUM	0.06
82102310	LUMINAIRE, SODIUM VAPOR, HORIZONTAL MOUNT, 310 WATT	EACH	4
85000200	MAINTENANCE OF EXISTING TRAFFIC SIGNAL INSTALLATION	EACH	1
85700200	FULL-ACTUATED CONTROLLER AND TYPE IV CABINET	EACH	1
86400100	TRANSCEIVER - FIBER OPTIC	EACH	1
87502500	TRAFFIC SIGNAL POST, GALVANIZED STEEL 16 FT	EACH	3
87702910	STEEL COMBINATION MAST ARM ASSEMBLY AND POLE, 36 FT	EACH	3
88102717	PEDESTRIAN SIGNAL HEAD, LED, 1-FACE, BRACKET MOUNTED WITH COUNTDOWN TIMER	EACH	4
88102747	PEDESTRIAN SIGNAL HEAD, LED, 2-FACE, BRACKET MOUNTED WITH COUNTDOWN TIMER	EACH	2
88500100	INDUCTIVE LOOP DETECTOR	EACH	10
88800100	PEDESTRIAN PUSH BUTTON	EACH	8
89500100	RELOCATE EXISTING SIGNAL HEAD	EACH	9
89501400	RELOCATE EXISTING EMERGENCY VEHICLE PRIORITY SYSTEM, DETECTOR UNIT	EACH	2
89501410	RELOCATE EXISTING EMERGENCY VEHICLE PRIORITY SYSTEM, PHASING UNIT	EACH	1
89502350	REMOVE AND REINSTALL ELECTRIC CABLE FROM CONDUIT	FOOT	800
89502375	REMOVE EXISTING TRAFFIC SIGNAL EQUIPMENT	EACH	1
X8050015	SERVICE INSTALLATION, POLE MOUNT	EACH	1
X8620020	UNINTERRUPTIBLE POWER SUPPLY	EACH	1
X8730027	ELECTRIC CABLE IN CONDUIT, GROUNDING, NO. 6 1C	FOOT	120
X0325705	RE-OPTIMIZE TRAFFIC SIGNAL SYSTEM, LEVEL 2	EACH	1

DU PAGE COUNTY D.O.T TRAFFIC SIGNAL INSTALLATION ELECTRICAL SERVICE REQUIREMENTS					TOTAL WATTAGE
TYPE	NO. LAMPS	WATTAGE		OPERATION (%)	
		INCAND.	LED		
RED BALL	13	135	10	0.60	78
YELLOW BALL	13	135	22	0.03	8.6
GREEN BALL	13	135	12	0.37	58
RED ARROW		135	5	0.85	
YELLOW ARROW	10	135	10	0.02	2
GREEN ARROW	10	135	5	0.13	6.5
PED - WALK	8	90	5	0.05	1.5
PED- DON'T WALK	8	90	6	0.95	46
CONTROLLER	1	100		1.00	100
LUMINAIRE	4	310		0.50	620
TOTAL=					921

PROPOSED EMERGENCY VEHICLE PREEMPTORS		
EMERGENCY VEHICLE PREEMPTOR	4	3
MOVEMENT	←	↑

EXIST AND PROPOSED EMERGENCY VEHICLE PREEMPTION SEQUENCE

REVISIONS	
NAME	DATE

DU PAGE COUNTY DIVISION OF TRANSPORTATION
COUNTY FARM RD & ARMY TRAIL RD
 EXIST AND PROPOSED CABLE DIAGRAM,
 PHASING DIAGRAM AND SCHEDULE OF
 QUANTITIES
 SCALE: NONE
 DATE: 4/23/10
 DRAWN BY: TH
 DESIGNED BY: TH
 CHECKED BY: DAZ