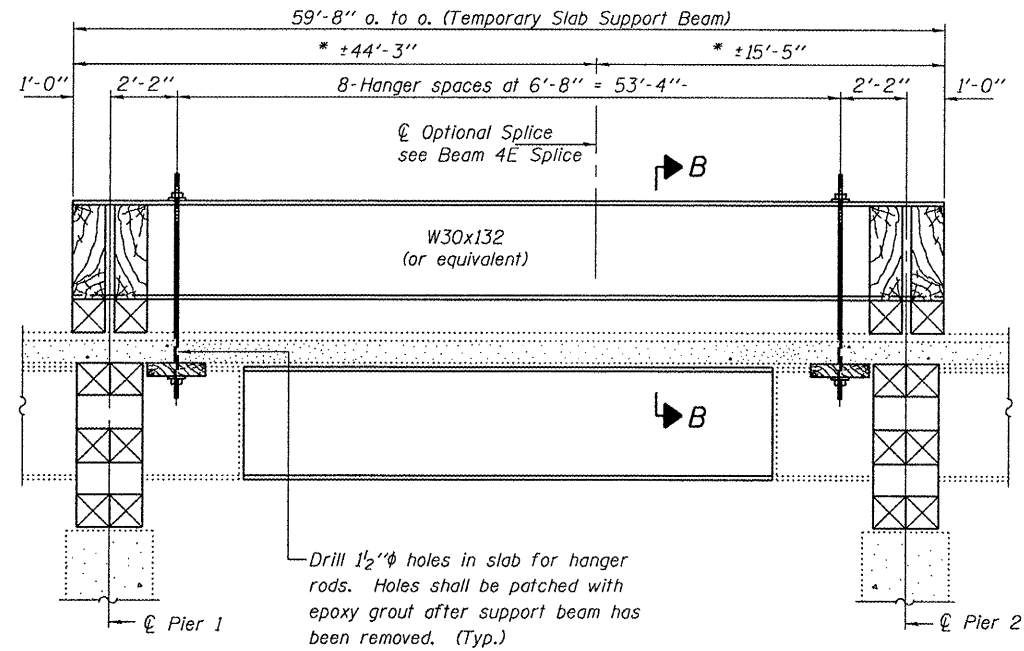
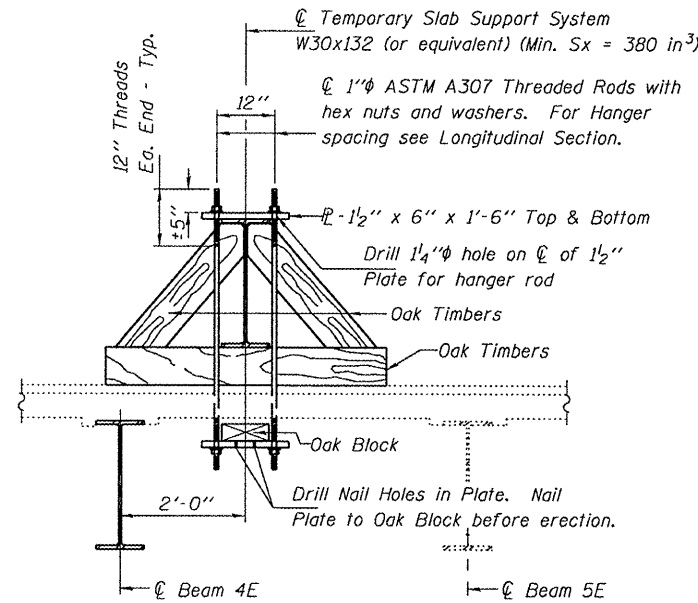


STATE OF ILLINOIS
DEPARTMENT OF TRANSPORTATION

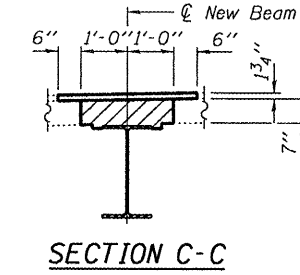
* These dimensions may vary for available beams in stock.



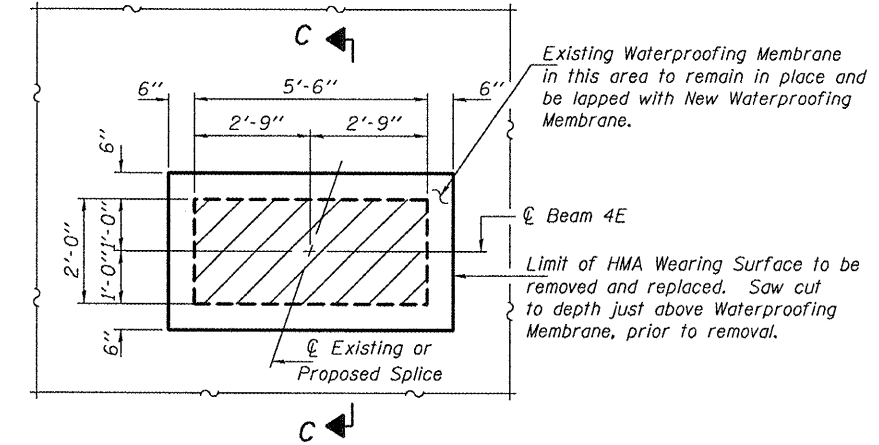
LONGITUDINAL SECTION
SUGGESTED TEMPORARY SLAB SUPPORT SYSTEM



SECTION B-B



SECTION C-C



TYPICAL CONCRETE & HMA WEARING SURFACE REMOVAL AND REPLACEMENT

Hatched areas indicate concrete sections to be removed and replaced. Perimeters of concrete removal areas shall be saw cut $\frac{3}{4}$ " prior to the removal of concrete. Reinforcement shall be cut only if required for fitting bolts. Cut reinforcement shall be spliced as directed by the Engineer. Cost shall be included with Concrete Removal. The cost of removing and replacing the existing HMA wearing surface, waterproofing membrane, and saw cutting shall be included with Concrete Removal.

DESIGNED	VHV
CHECKED	IJL
DRAWN	Kyle M. Steffen
CHECKED	VHV IJL

JUNE 15, 2010
EXAMINED *Carl Perry*
ENGINEER OF STRUCTURAL SERVICES
PASSED *Ralph E. Anderson*
ENGINEER OF BRIDGES AND STRUCTURES

REPAIR DETAILS
PINECREST DRIVE
OVER F.A.I. RTE. 74
SN 090-0091

SHEET NO. 3	F.A.I. RTE.	SECTION	COUNTY	TOTAL SHEETS	SHEET NO.
	74	[90-14HB-1(BR)]I	TAZEWELL	17	12
4 SHEETS	CONTRACT NO. 68976				
FED. ROAD DIST. NO.		ILLINOIS FED. AID PROJECT			