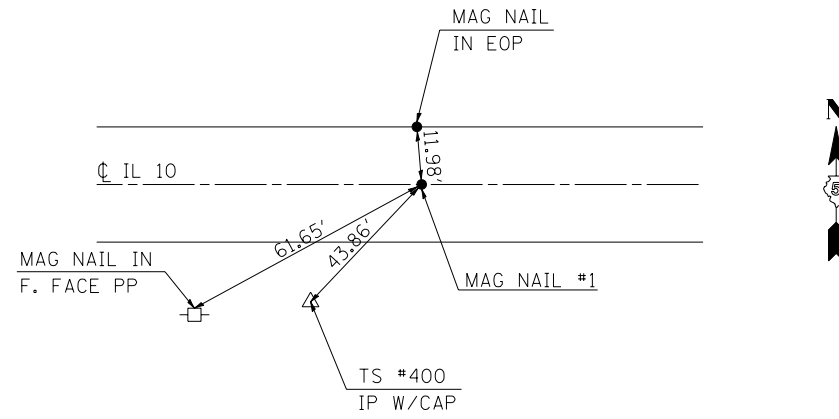
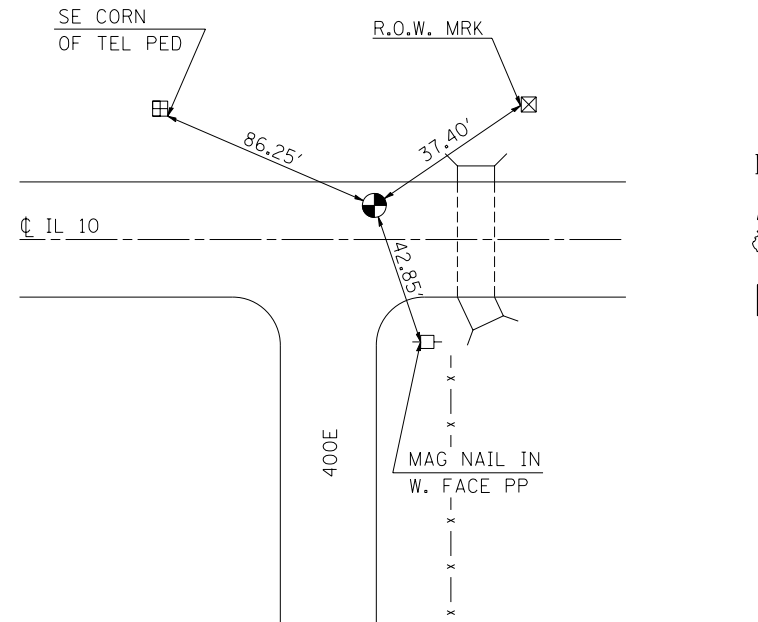


TIE POINTS

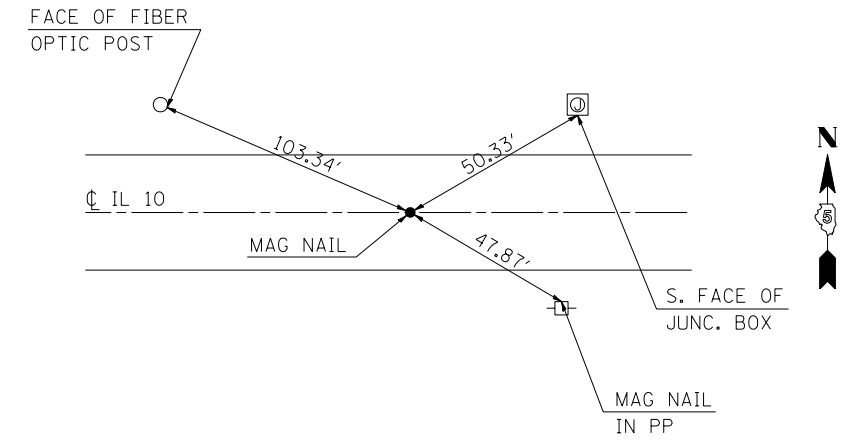
P.O.T. #1
STATION 328 + 67.66



SECTION CORNER #2
STATION 338 + 86, 6.67' RT.



P.O.T. #7
STATION 345 + 59.83
BASIS OF STATIONING



BENCHMARKS

BENCHMARK #4863-1
CHISELED SQUARE ON THE SOUTHEAST CORNER
OF THE SOUTH HEADWALL
S.N. 010-8115
STATION 338+56, LT. 25', ELEV. = 717.612

FILE NAME =	USER NAME = blackrt	DESIGNED - RTB	REVISED -
ct:\pw\work\PWIDOT\BLACKRT\d0132092\0570701-sht-ATB.dgn		DRAWN - BBP	REVISED -
	PLOT SCALE = 40.0000' / IN.	CHECKED -	REVISED -
	PLOT DATE = 3/30/2010	DATE - 03/05/10	REVISED -

STATE OF ILLINOIS
DEPARTMENT OF TRANSPORTATION

TIE POINTS & BENCHMARKS

SCALE: NONE SHEET NO. 1 OF 1 SHEETS STA. TO STA.

F.A.S. RTE.	SECTION	COUNTY	TOTAL SHEETS	SHEET NO.
1514	4CR	CHAMPAIGN	29	10
			CONTRACT NO. 70701	
ILLINOIS FED. AID PROJECT				