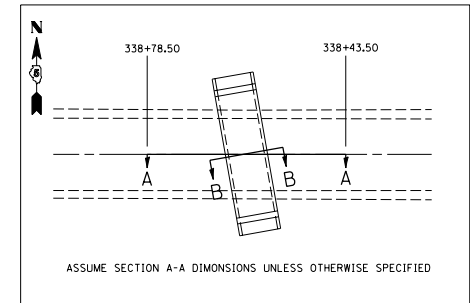
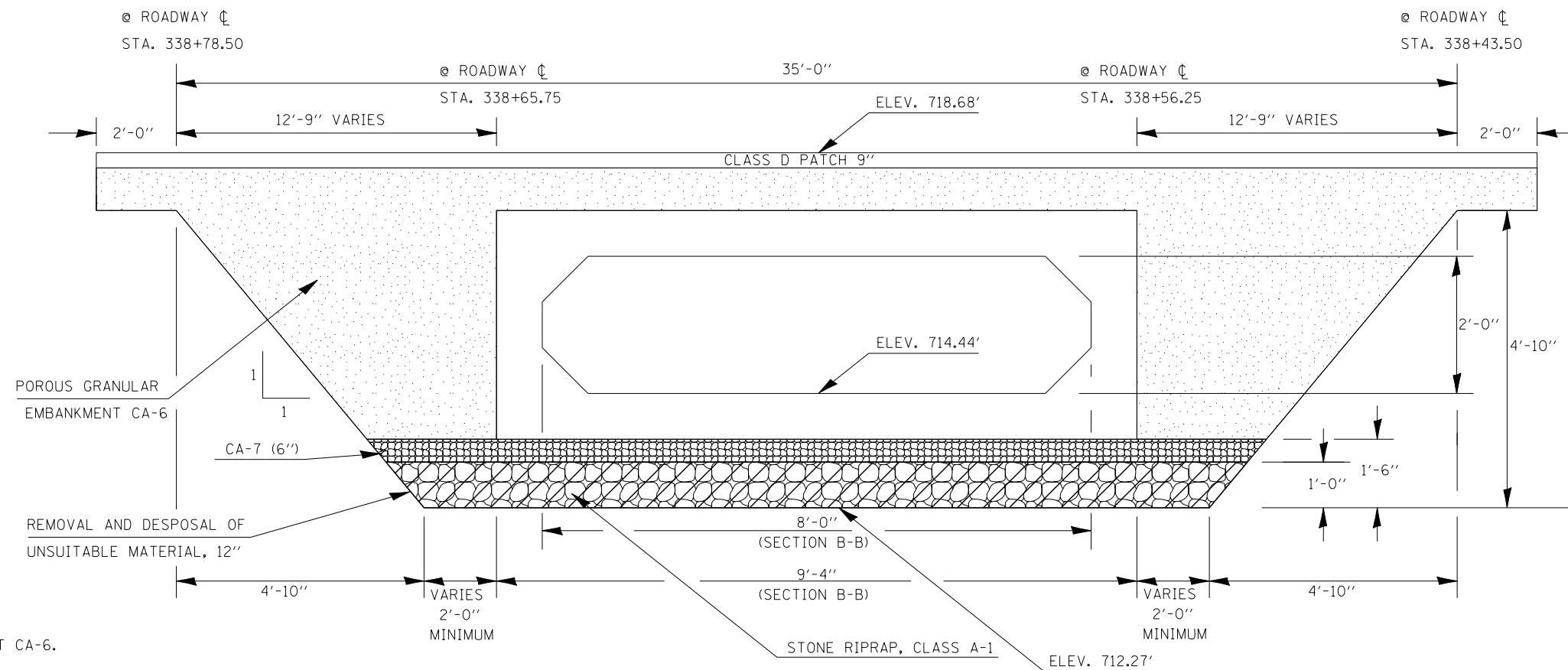


DETAIL OF POROUS GRANULAR EMBANKMENT PAY LIMITS

PROPOSED STRUCTURE 010-8135 STA. 338 + 61.00



SECTION A-A



- POROUS GRANULAR EMBANKMENT CA-6.
- POROUS GRANULAR MATERIAL CA-7, 6". (INCLUDED IN PAY ITEMS FOR PCBC AND END SECTIONS)
- STONE RIP RAP, CLASS A-1.
- REMOVAL AND DISPOSAL OF UNSUITABLE MATERIAL, 12". (INCLUDED IN PAY ITEM FOR STONE RIPRAP, CLASS A-1).

GENERAL NOTES

WORK SHOWN IN THE DETAIL SHALL BE PERFORMED IN ACCORDANCE WITH APPLICABLE PORTIONS OF SECTION 281 AND SECTION 282 OF THE STANDARD SPECIFICATIONS.

THE EXCAVATION AND REMOVAL OF THE UNSUITABLE MATERIAL WILL NOT BE PAID FOR SEPARATELY, BUT SHALL BE INCLUDED WITH THE PAY ITEM FOR STONE RIPRAP, CLASS A1.

WORK SHOWN IN DETAIL SHALL BE DONE ACCORDING TO THE APPLICABLE PORTIONS OF ARTICLE 207 AND ARTICLE 540 OF THE STANDARD SPECIFICATIONS.

POROUS GRANULAR EMBANKMENT SHALL EXTEND 2 FT. BEYOND THE AGGREGATE SHOULDER

THE AREA TO BE EXCAVATED FOR THE PROPOSED BOX CULVERT SHALL NOT BE MEASURED FOR PAYMENT. THE COST OF THE EXCAVATION SHALL BE CONSIDERED AS INCLUDED IN THE COST OF PRECAST CONCRETE BOX CULVERTS AND BOX CULVERT END SECTIONS.

BILL OF MATERIAL

ITEM	UNIT	TOTAL
POROUS GRANULAR EMBANKMENT	CU YD	140.0
STONE RIPRAP, CLASS A1	TON	55.0