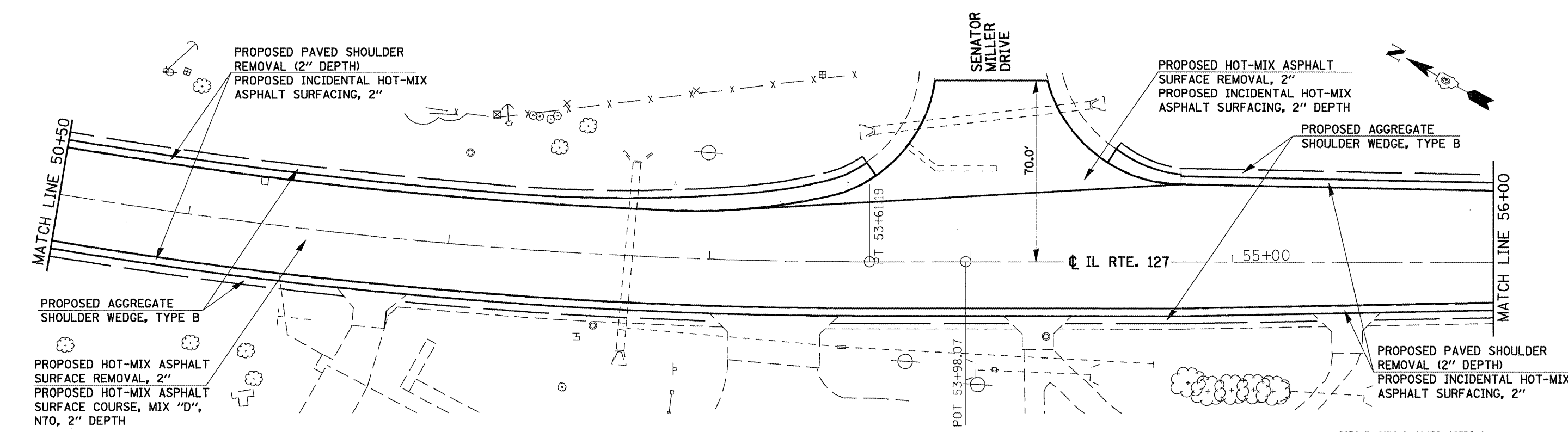
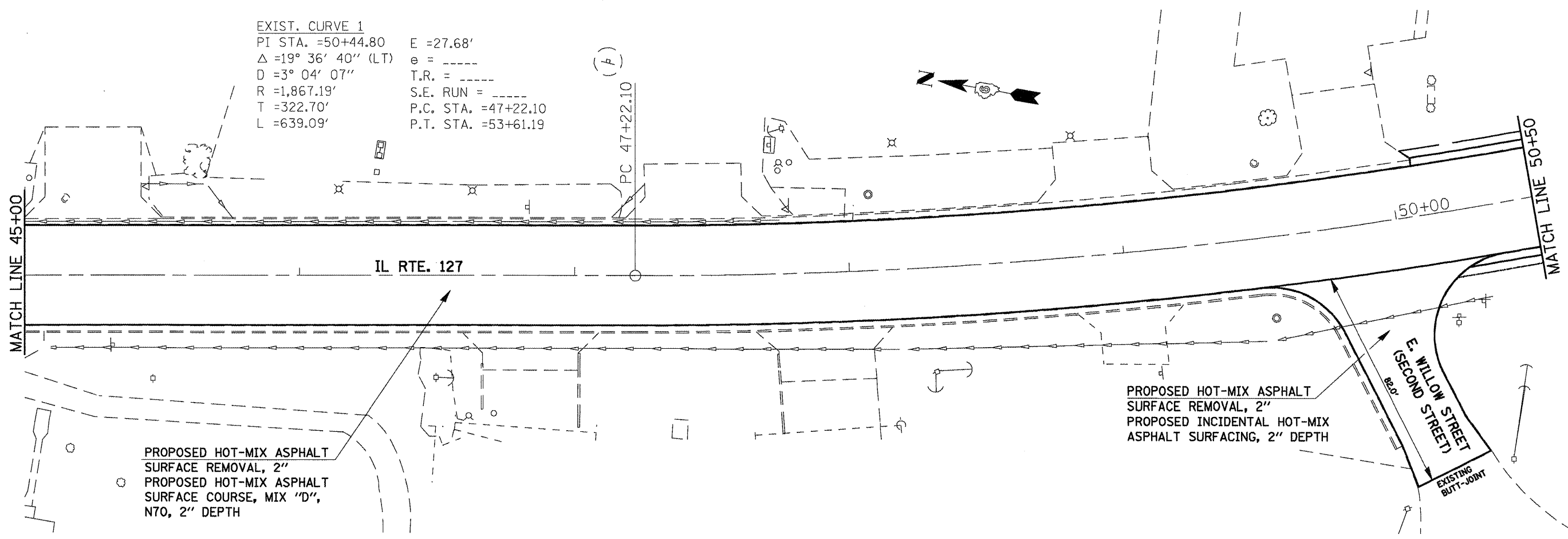


EXIST. CURVE 1  
 PI STA. =50+44.80 E =27.68'  
 $\Delta =19^\circ 36' 40''$  (LT) e = ----  
 D =3' 04' 07'' T.R. = ----  
 R =1,867.19' S.E. RUN = ----  
 T =322.70' P.C. STA. =47+22.10  
 L =639.09' P.T. STA. =53+61.19



•-20RS-7, 21RS-6, 104RS, 105RS-4  
 •-325, 24

FILE NAME =  
 c:\pwwork\pwwid\LAUGHLIN\LD0105356\72C52-shr-plan.dgn

USER NAME = laughlin1  
 PLOT SCALE = 40.0000' / IN.  
 PLOT DATE = Mar-26-2010 11:59:57AM

DESIGNED - RTS	REVISED -
DRAWN - RTS	REVISED -
CHECKED - RTS	REVISED -
DATE - 3-10-10	REVISED -

**STATE OF ILLINOIS  
 DEPARTMENT OF TRANSPORTATION**

**PLAN SHEET**

SCALE: SHEET NO. 14 OF 15 SHEETS STA. TO STA.

F.A.P. RTE.	SECTION	COUNTY	TOTAL SHEETS	SHEET NO.
••	•	MONTGOMERY	60	35
FED. ROAD DIST. NO. ILLINOIS FED. AID PROJECT			CONTRACT NO. 72C52	