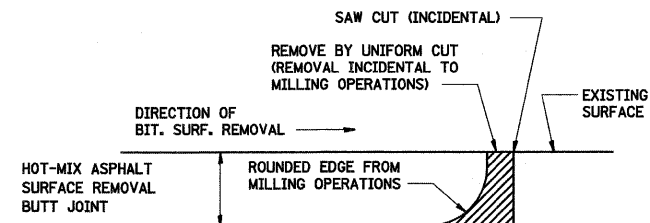
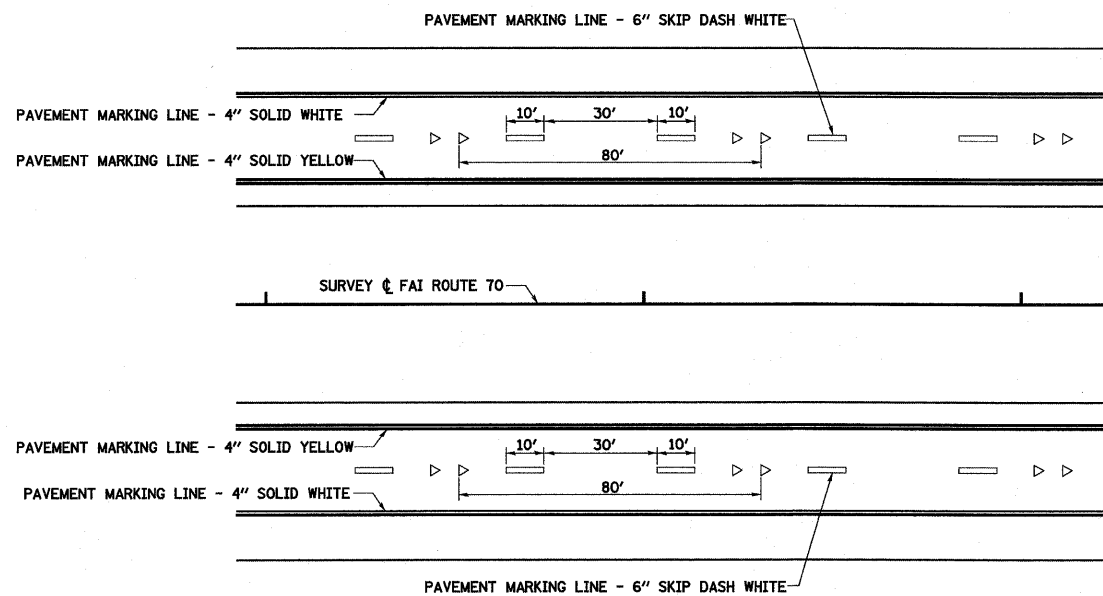


DETAIL OF BUTT JOINT
NOT TO SCALE

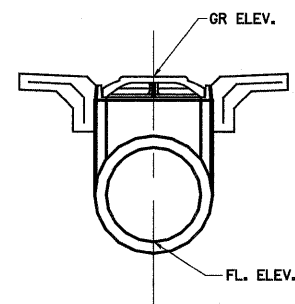


NOTE: WHEN MILLING OPERATIONS PRODUCE A ROUNDED EDGE, THEN A SAW CUT SHALL BE USED TO MANUFACTURE A PERPENDICULAR EDGE AS SHOWN IN THE DETAIL. THE ENGINEER SHALL BE THE SOLE JUDGE CONCERNING THE USE OF THIS DETAIL.

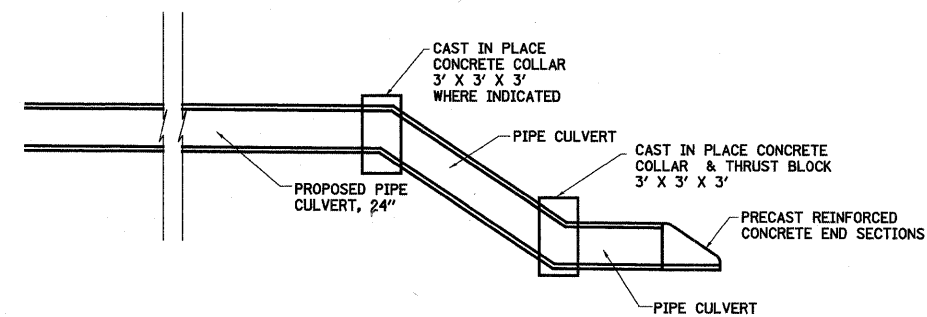
BITUMINOUS DETAIL AT BUTT JOINTS
NOT TO SCALE



PAVEMENT MARKING DETAIL



**24" MEDIAN INLET (604101)
WITH REINFORCED CONCRETE
PIPE TEE, 24" WITH 24" RISER (542606)**



MEDIAN DRAIN DETAIL

FILE NAME =	USER NAME = paul	DESIGNED - ESW	REVISED -	STATE OF ILLINOIS DEPARTMENT OF TRANSPORTATION	MISCELLANEOUS DETAILS			F.A.I. RTE.	SECTION	COUNTY	TOTAL SHEETS	SHEET NO.
5:\projects\74296\74296.dwg		DRAWN - PDB	REVISED -					70	(25-3)B	EFFINGHAM	1416	32
PLOT SCALE = 1/8" = 1' / IN.		CHECKED - BRM	REVISED -		SCALE: 1"=50'			SHEET NO. 1 OF 1 SHEETS		STA.	TO STA.	
PLOT DATE = 3/16/2018		DATE - 4-28-09	REVISED -		FED. ROAD DIST. NO.			ILLINOIS FED. AID PROJECT		CONTRACT NO. 74296		