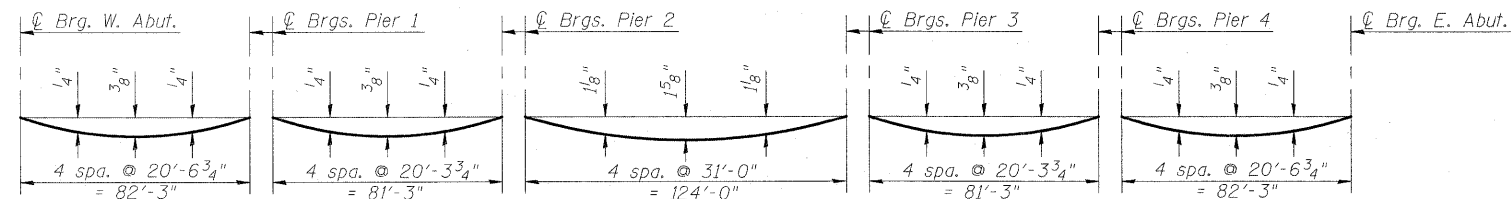


STATE OF ILLINOIS  
DEPARTMENT OF TRANSPORTATION

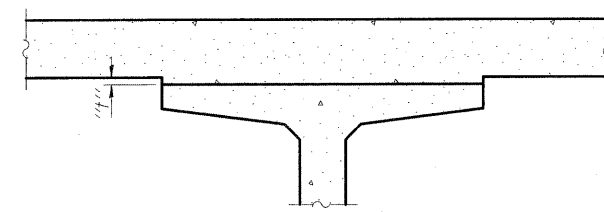


**DEAD LOAD DEFLECTION DIAGRAM**

(Includes weight of concrete, excluding beams)

Note:

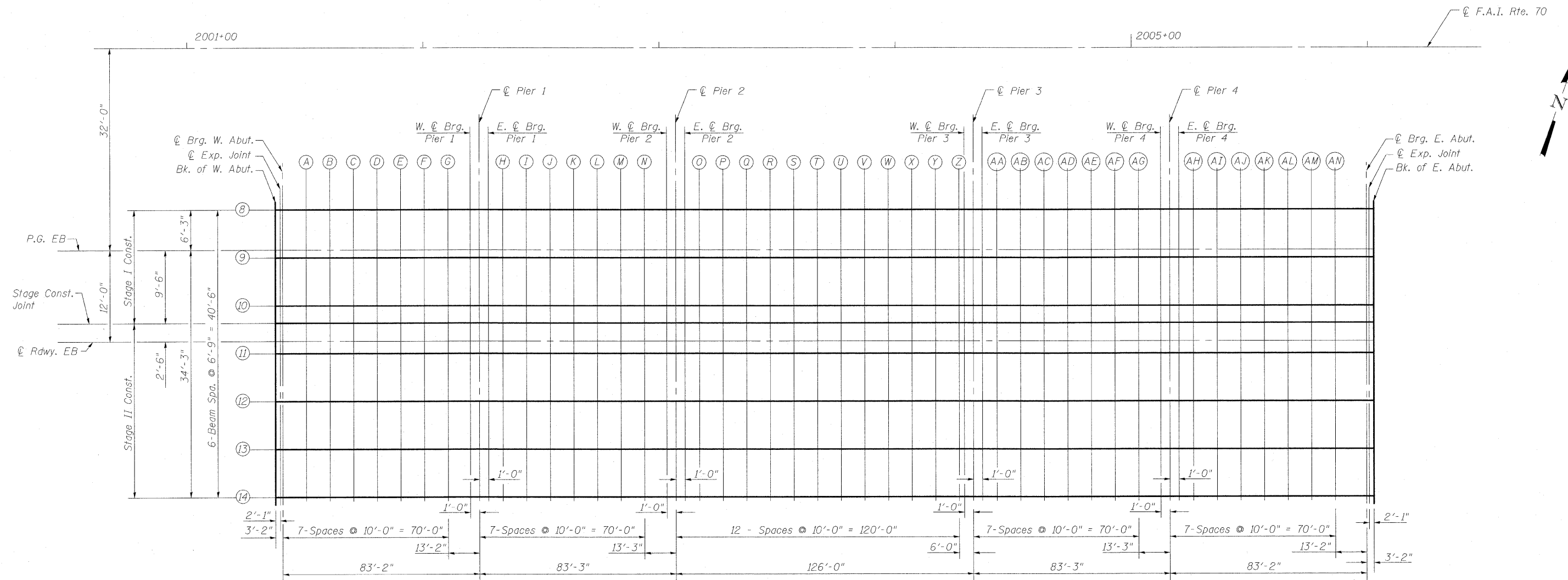
The above deflections are not to be used in the field if the engineer is working from the grade elevations adjusted for dead load deflections and grinding as shown below and on sheets 9 thru 18 of 58.



To determine "t". After all precast prestressed beams have been erected, elevations of the top flanges of the beams shall be taken at intervals shown below and on sheets 9 thru 18 of 58. These elevations subtracted from the "Theoretical Grade Elevations Adjusted for Dead Load Deflections" show below and on sheets 9 thru 18 of 58, minus slab thickness, equals the fillet heights "t" above top flanges of beams.

The slab is to be ground after curing to achieve smoothness but the slab is not to be ground to elevations below the "Theoretical Grade Elevations" shown below and on sheets 9 thru 18 of 58. For grinding the deck see Special Provisions.

**FILLET HEIGHTS**



**ELEVATIONS LOCATION PLAN (E.B.) - S.N. 025-0107**

**TOP OF SLAB ELEVATIONS  
STRUCTURE NO. 025-0107**

DESIGNED	B.B.
CHECKED	A.C.S.
DRAWN	W.J.S.
CHECKED	C.J.F. & B.B.

**BERNARDIN  
LOCHMUELLER &  
ASSOCIATES, INC.**

8 Oak Drive  
Maryville, IL 62062-5635  
Local (618) 288-4955  
Fax 618-288-4666

SHEET NO. 8 58 SHEETS	F.A.I. RTE. 70	SECTION (25-3)B	COUNTY EFFINGHAM	TOTAL SHEETS 1416	SHEET NO. 40
	SN 025-0107		CONTRACT NO. 74296		
FED. ROAD DIST. NO. 7 ILLINOIS FED. AID PROJECT 70					

20720 PM 3/19/2000 \0250107.dwg