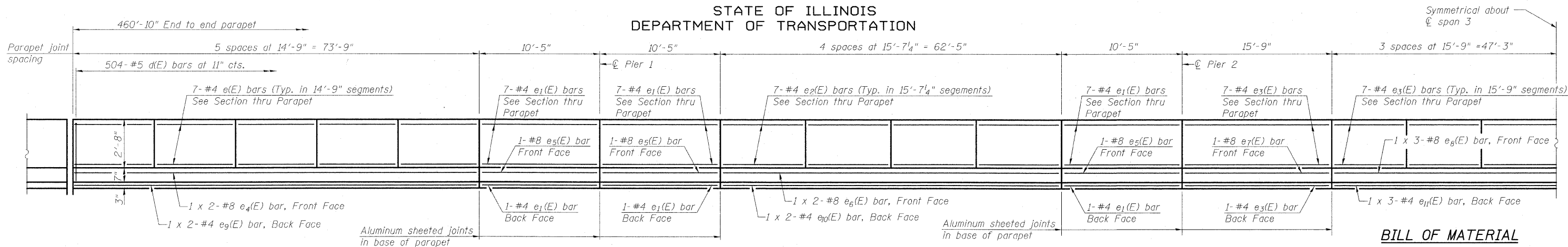


STATE OF ILLINOIS
DEPARTMENT OF TRANSPORTATION

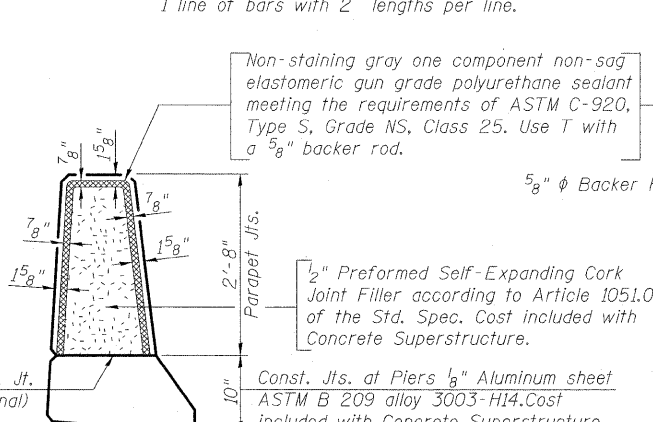


**BILL OF MATERIAL
SUPERSTRUCTURE (TWO STRUCTURES)**

Bar	No.	Size	Length	Shape
a(E)	2690	#5	18'-8"	—
a1(E)	2690	#5	27'-8"	—
a2(E)	3164	#6	6'-6"	—
a11(E)	60	#5	6'-0"	—
a12(E)	12	#6	4'-0"	—
a13(E)	4	#5	15'-9"	—
a14(E)	4	#5	24'-9"	—
b(E)	900	#5	53'-7"	—
b1(E)	360	#7	34'-0"	—
b2(E)	720	#7	32'-10"	—
b3(E)	840	#5	48'-6"	—
d(E)	2016	#5	6'-11"	⌒
d1(E)	2016	#5	6'-11"	⌒
e(E)	280	#4	14'-6"	—
e1(E)	192	#4	10'-2"	—
e2(E)	224	#4	15'-4"	—
e3(E)	232	#4	15'-6"	—
e4(E)	16	#8	38'-6"	—
e5(E)	24	#8	10'-2"	—
e6(E)	16	#8	32'-10"	—
e7(E)	8	#8	15'-6"	—
e8(E)	12	#8	33'-9"	—
e9(E)	16	#4	37'-5"	—
e10(E)	16	#4	31'-9"	—
e11(E)	12	#4	32'-4"	—
m(E)	400	#4	6'-0"	—
m1(E)	80	#4	1'-9"	—
m2(E)	80	#4	4'-0"	—
m3(E)	56	#8	6'-2"	—
m4(E)	80	#6	4'-3"	—
m5(E)	16	#6	0'-10"	—
m6(E)	16	#6	3'-1"	—
s(E)	192	#4	16'-1"	U
x(E)	96	#5	7'-4"	—
Reinforcement Bars, Epoxy Coated		Pound	377780	
Concrete Superstructure		Cu. Yds.	1674.6	
Bar Splicers		Each	2714	

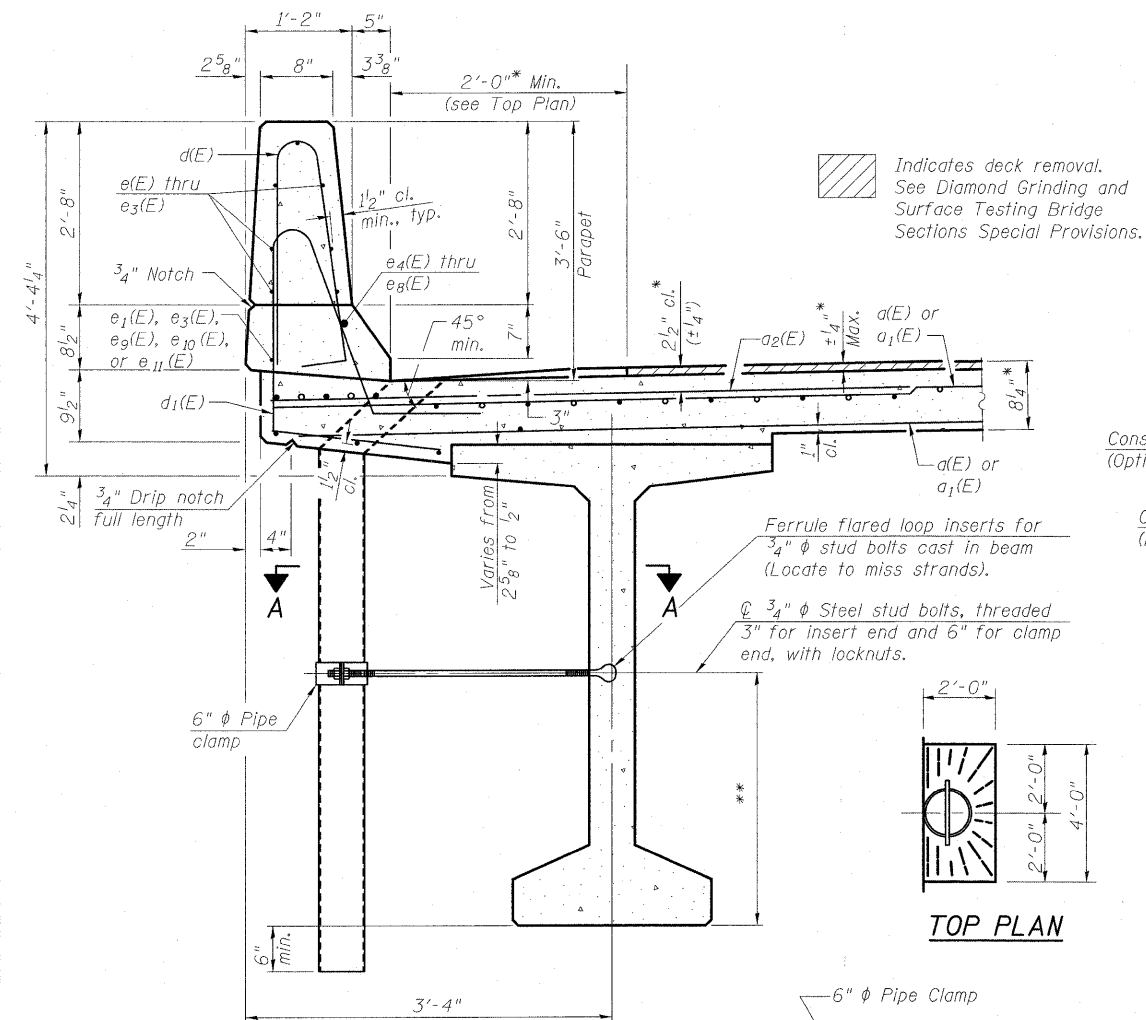
INSIDE ELEVATION OF PARAPET

Bars indicated thus 1 x 2 -#4 etc. indicates 1 line of bars with 2 lengths per line.



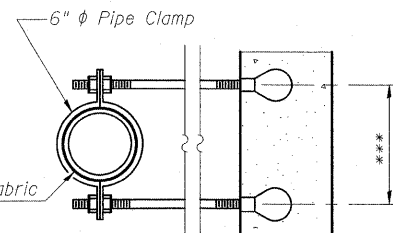
PARAPET JOINT DETAILS

Notes:
Fiberglass pipe shall conform to ASTM D2996, with short-time rupture strength hoop tensile stress of 30,000 p.s.i. minimum.
The exterior surfaces of the floor drains shall be coated or pigmented by the manufacturer with a color that matches the concrete.
The clamping device and inserts shall be galvanized according to AASHTO M 232.
Set top of pipe drain 1/4" min. below top of finished deck prior to Diamond Grinding and Surface Testing Bridge Sections Special Provisions.
The remaining 1/4" deck around the drains shall be sloped and formed to drain, see Top Plan view.



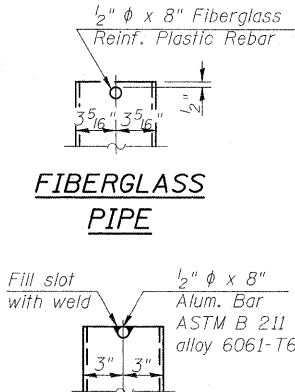
SECTION THRU PARAPET

* See Diamond Grinding and Surface Testing Bridge Sections Special Provision.
** For insert locations See sheets 35 thru 37 of 58.



***Dimension as required by Pipe Clamp

FIBERGLASS PIPE



TOP PLAN

(Showing Aluminum Tube)

MINIMUM BAR LAP

(Parapet)
#4 bar = 1'-4"
#8 bar = 3'-5"

DESIGNED	B.B.
CHECKED	A.C.S.
DRAWN	W.J.S.
CHECKED	C.J.F. & B.B.

BERNARDIN LOCHMUELLER & ASSOCIATES, INC.

3 Oak Drive
Maryville, IL 62442-5685
Local (618) 268-4065
Fax 618-268-6666

SHEET NO. 25 58 SHEETS	F.A.I. RTE. 70	SECTION (25-3)B	COUNTY EFFINGHAM	TOTAL SHEETS 1416	SHEET NO. 57
	SN 025-0107 & 025-0108			CONTRACT NO. 74296	
FED. ROAD DIST. NO. 7 ILLINOIS FED. AID PROJECT 70					

**SUPERSTRUCTURE DETAIL
S.N. 028-0107 & 025-0108**

1/2/2005 AM 4/29/2010 10:25:07 94991025.dwg