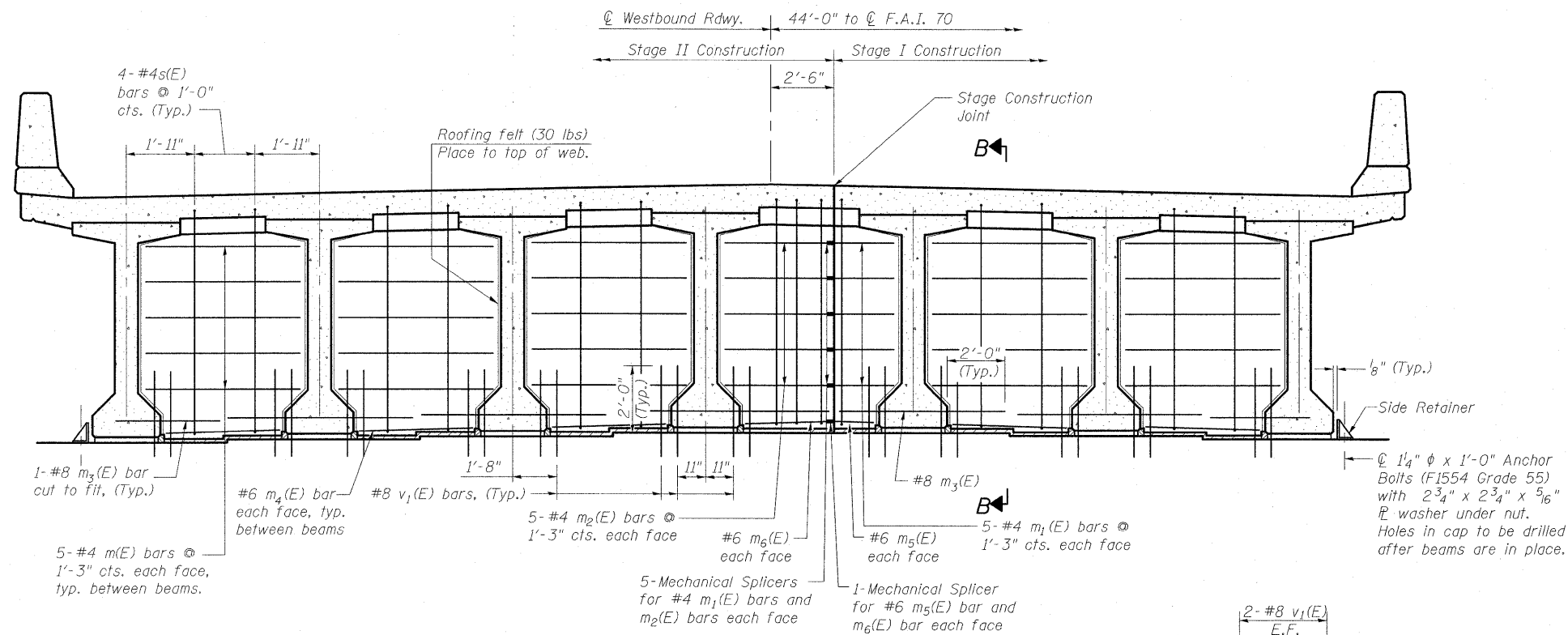


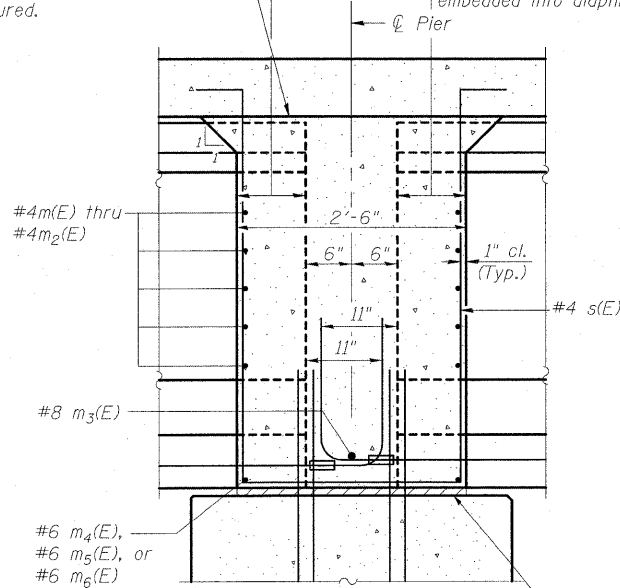
STATE OF ILLINOIS
DEPARTMENT OF TRANSPORTATION



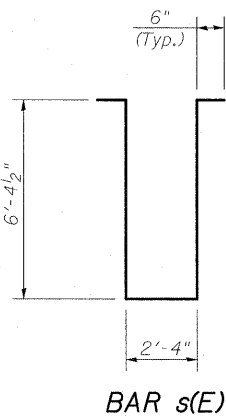
ELEVATION
DIAPHRAGM AT PIER
(Westbound looking East)

Pour diaphragm flush with bott. of slab. Concrete in slab above this line shall be placed not less than 45 min. nor more than 90 min. after diaphragm has been poured.

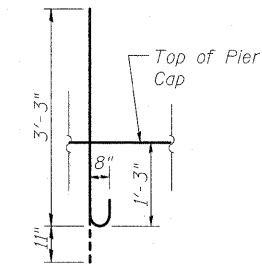
Roofing felt (30 lbs) shall be bonded to side of beam embedded into diaphragm.



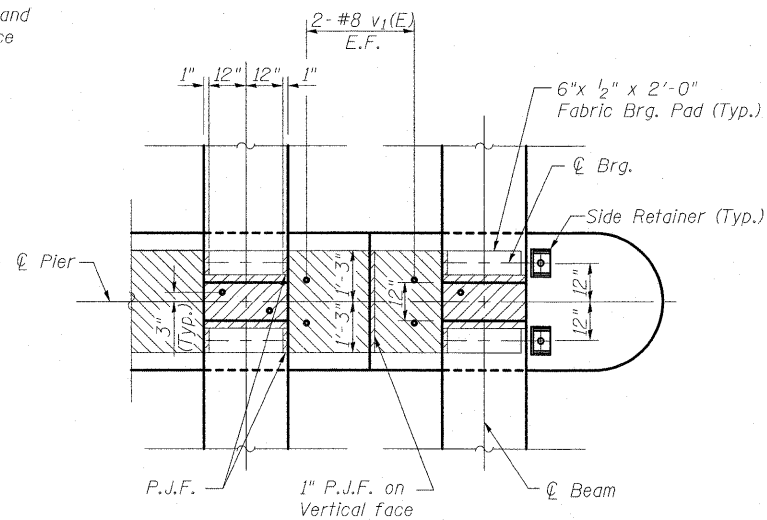
SECTION B-B
AT PIER



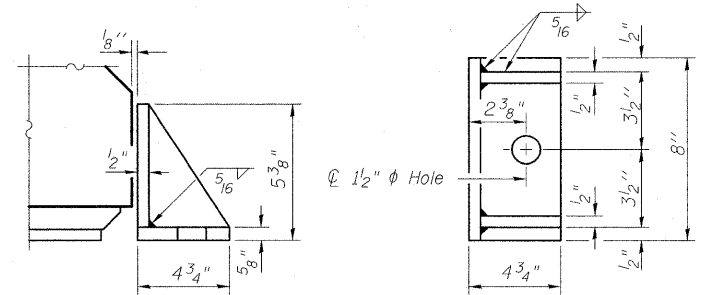
BAR s(E)



BAR v1(E)



PLAN
DIAPHRAGM AT PIER



SIDE RETAINER AT PIER DIAPHRAGM

Equivalent rolled angle with stiffeners will be allowed in lieu of welded plates.
The side retainer shall be galvanized after shop fabrication according to AASHTO M111 and ASTM A 385.
Cost of side retainers and anchor bolts shall be included with Concrete Structures.

PIER DIAPHRAGM DETAILS (W.B.)
STRUCTURE NO. 025-0108

Notes:
Reinforcement bars in diaphragm are billed with superstructure on sheet 25 of 58.
Concrete in diaphragm is included with Concrete Superstructure on sheet 25 of 58.
Cost of 30 Lb. roofing felt is included with Concrete Superstructure.
The Anchor Bolt sizes and grades shown constitute a calculated seismic structural fuse. Substitution of higher diameter and/or grade Anchor Bolts will not be allowed.
For v1(E) bars see sheet 44 of 58.

DESIGNED	B.B.
CHECKED	A.C.S.
DRAWN	W.J.S.
CHECKED	C.J.F. & B.B.



BERNARDIN
LOCHMUELLER &
ASSOCIATES, INC.

3 Oak Drive
Maryville, IL 62962-2635
Local (618) 298-4665
Fax 618-298-4666

SHEET NO. 32	F.A.I. RTE.	SECTION	COUNTY	TOTAL SHEETS	SHEET NO.
	70	(25-3)B	EFFINGHAM	1416	64
58 SHEETS	SN 025-0108		CONTRACT NO. 74296		
FED. ROAD DIST. NO. 7		ILLINOIS	FED. AID PROJECT 70		