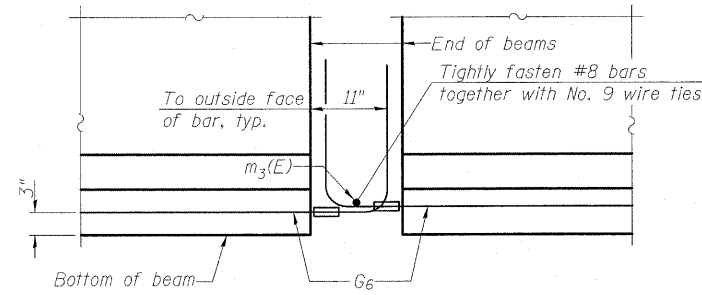


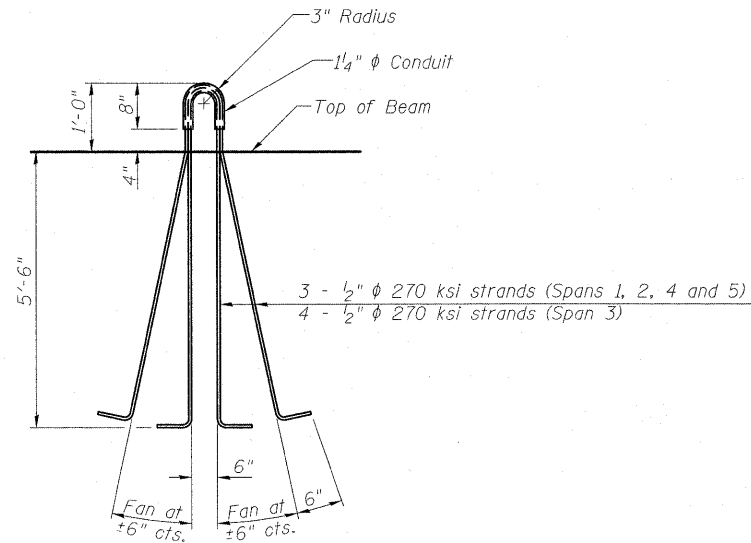
STATE OF ILLINOIS  
DEPARTMENT OF TRANSPORTATION

NOTES

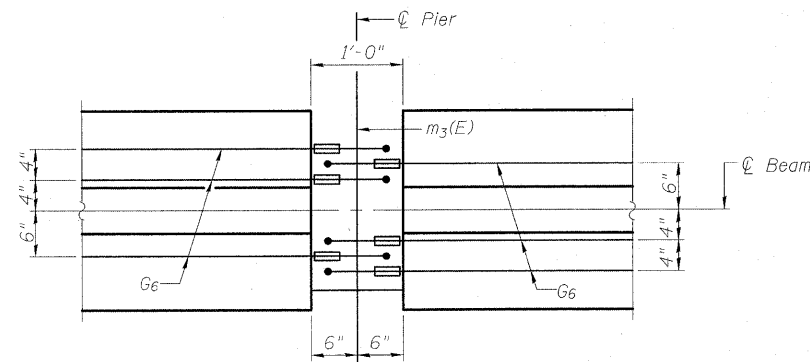
Inserts for  $\frac{3}{4}$ "  $\phi$  threaded dowel rods, when specified, are to be two strut, ferrule type for interior beams and single ferrule, flared loop type for exterior beams.  
Prestressing steel shall be uncoated high strength, low relaxation 7-wire strand, Grade 270. The nominal diameter shall be  $\frac{1}{2}$ " and the nominal cross-sectional area shall be 0.153 sq. in.  
Reinforcement bars shall conform to ASTM A 706, Grade 60. (See Special Provisions). A minimum  $2\frac{1}{2}$ "  $\phi$  lifting pin shall be used to engage the lifting loops during handling. Tilt G<sub>6</sub> bars when necessary to maintain  $1\frac{1}{2}$ " clearance.  
The top and bottom plates shall be AASHTO M270 Grade 50.  
The bottom plates and studs shall be galvanized according to AASHTO M111. Top plates and threaded rods need not be galvanized.  
Threaded rods shall be ASTM F 1554 Grade 55.  
The G<sub>6</sub> bar assembly shall have the threaded ends oversized to ensure no reduction in cross sectional area after threading. The coupler splice shall be capable of developing 125 percent of the yield strength of the reinforcement bar.



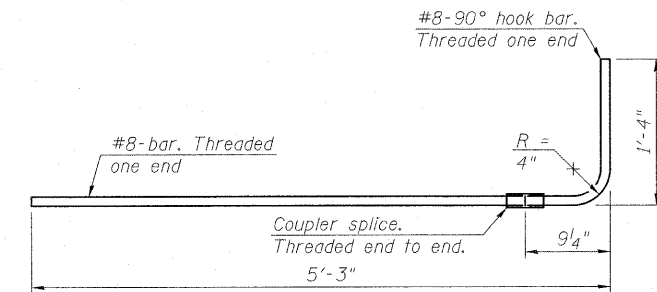
ELEVATION OF BEAM AT PIER



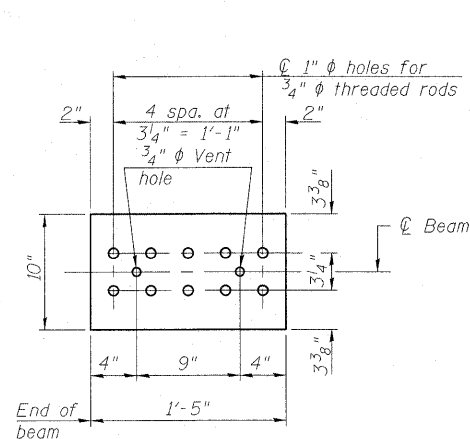
LIFTING LOOP DETAIL



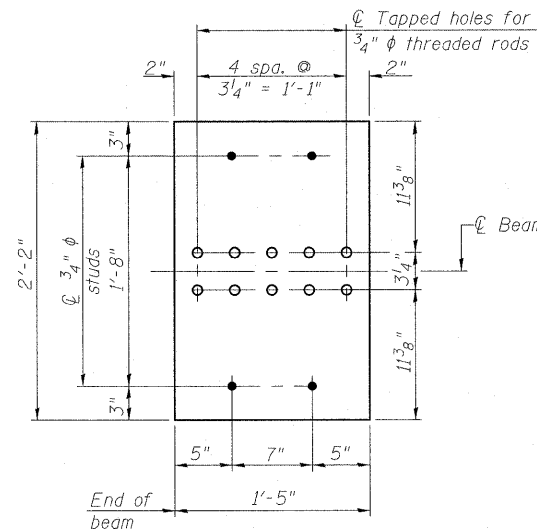
PLAN OF BEAM AT PIER



G<sub>6</sub> BAR ASSEMBLY

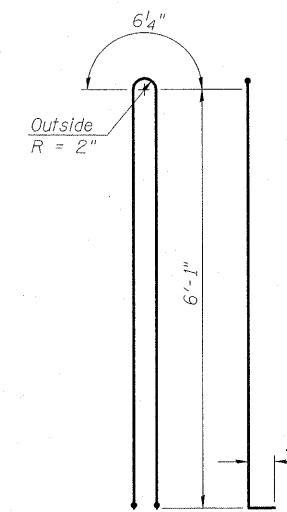


TOP PLATE

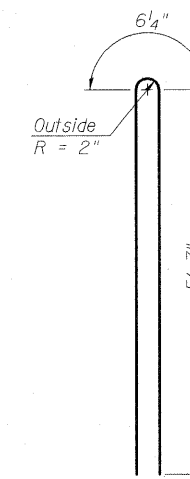


BOTTOM PLATE

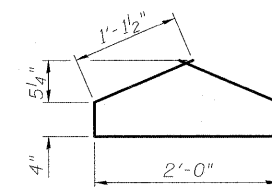
See bearing details for pintle hole locations when required.



BAR G<sub>1</sub>



BAR G<sub>2</sub>



BAR G<sub>4</sub>

BILL OF MATERIAL

Item	Unit	Total
Furnishing and Erecting Precast Prestressed Concrete Bulb T-Beams, 72"	Ft.	6387

72" PPC BULB T-BEAM DETAILS  
S.N. 025-0107 & 025-0108

DESIGNED	
CHECKED	
DRAWN	W.J.S.
CHECKED	C.J.F. & B.B.

PBT-4-72D

11-1-09



BERNARDIN  
LOCHMUELLER &  
ASSOCIATES, INC.

3 Oak Drive  
Maryville, IL 62452-5635  
Local (618) 288-4665  
Fax 618-288-4666

SHEET NO. 38 58 SHEETS	F.A.I. RTE. 70	SECTION (25-3)B	COUNTY EFFINGHAM	TOTAL SHEETS 1416	SHEET NO. 70
	SN 025-0107 & 025-0108			CONTRACT NO. 74296	
FED. ROAD DIST. NO. 7 ILLINOIS FED. AID PROJECT 70					