

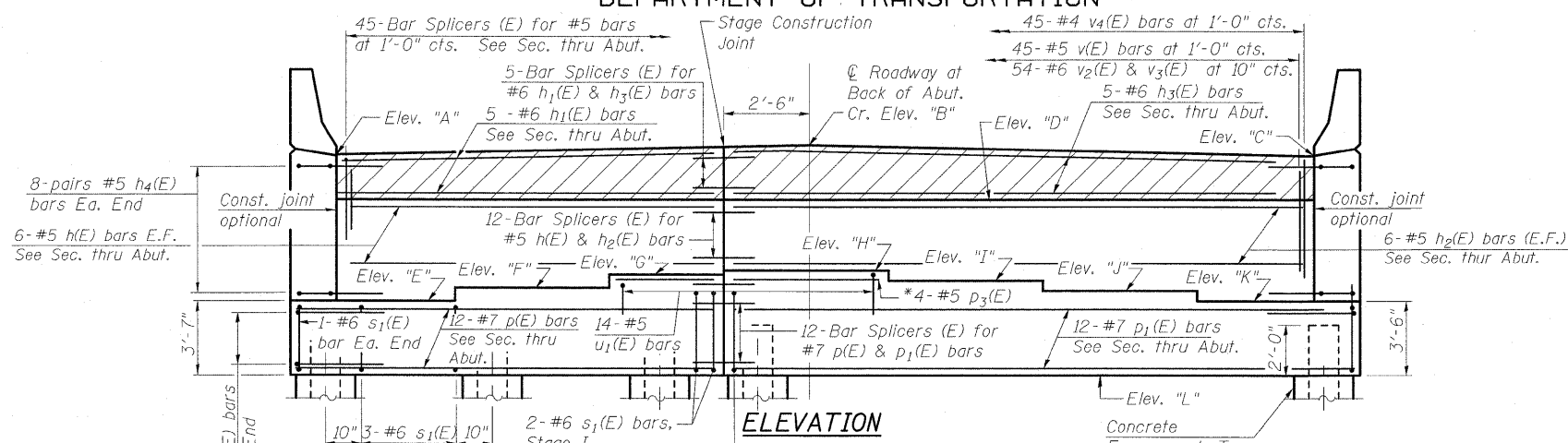
STATE OF ILLINOIS  
DEPARTMENT OF TRANSPORTATION

STEP HEIGHTS

Elev.	W. Abut.	E. Abut.
E to F	+1 <sup>7</sup> / <sub>8</sub> "	+1 <sup>5</sup> / <sub>8</sub> "
F to G	+7 <sup>7</sup> / <sub>8</sub> "	+1 <sup>3</sup> / <sub>8</sub> "
G to H	+1"	0"
H to I	-1 <sup>1</sup> / <sub>4</sub> "	-1"
I to J	-1 <sup>3</sup> / <sub>4</sub> "	-1 <sup>3</sup> / <sub>8</sub> "
J to K	-1 <sup>3</sup> / <sub>4</sub> "	-1 <sup>5</sup> / <sub>8</sub> "

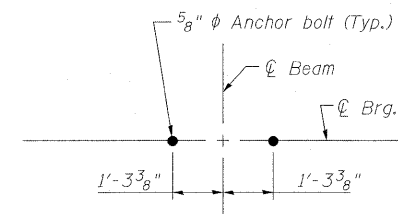
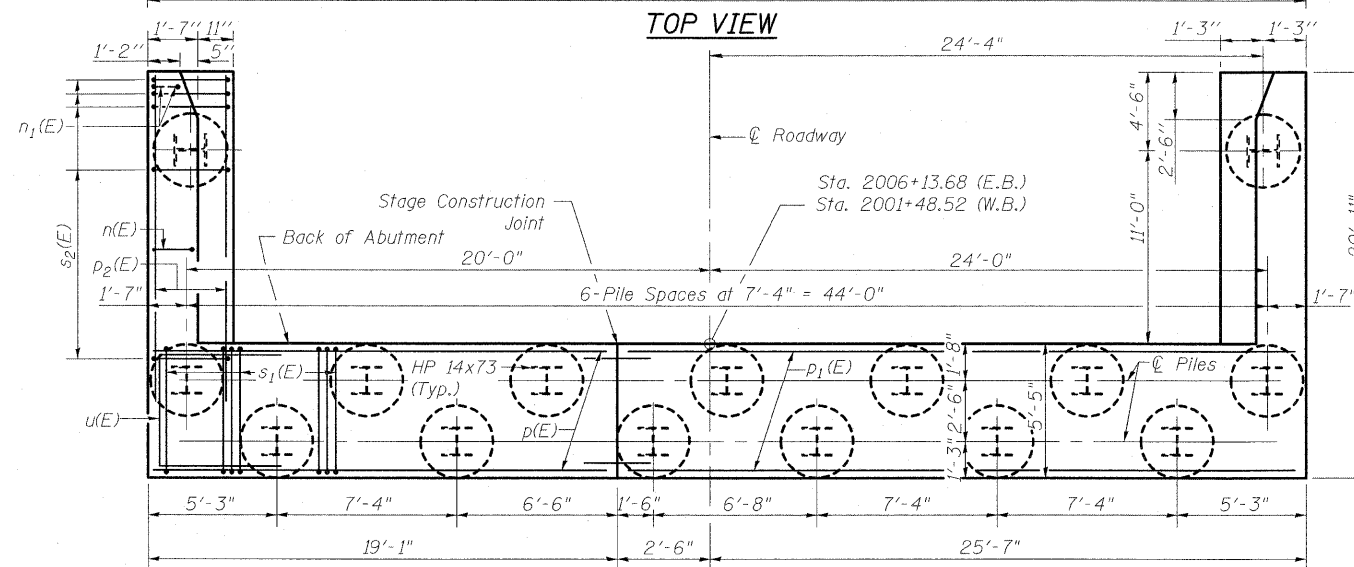
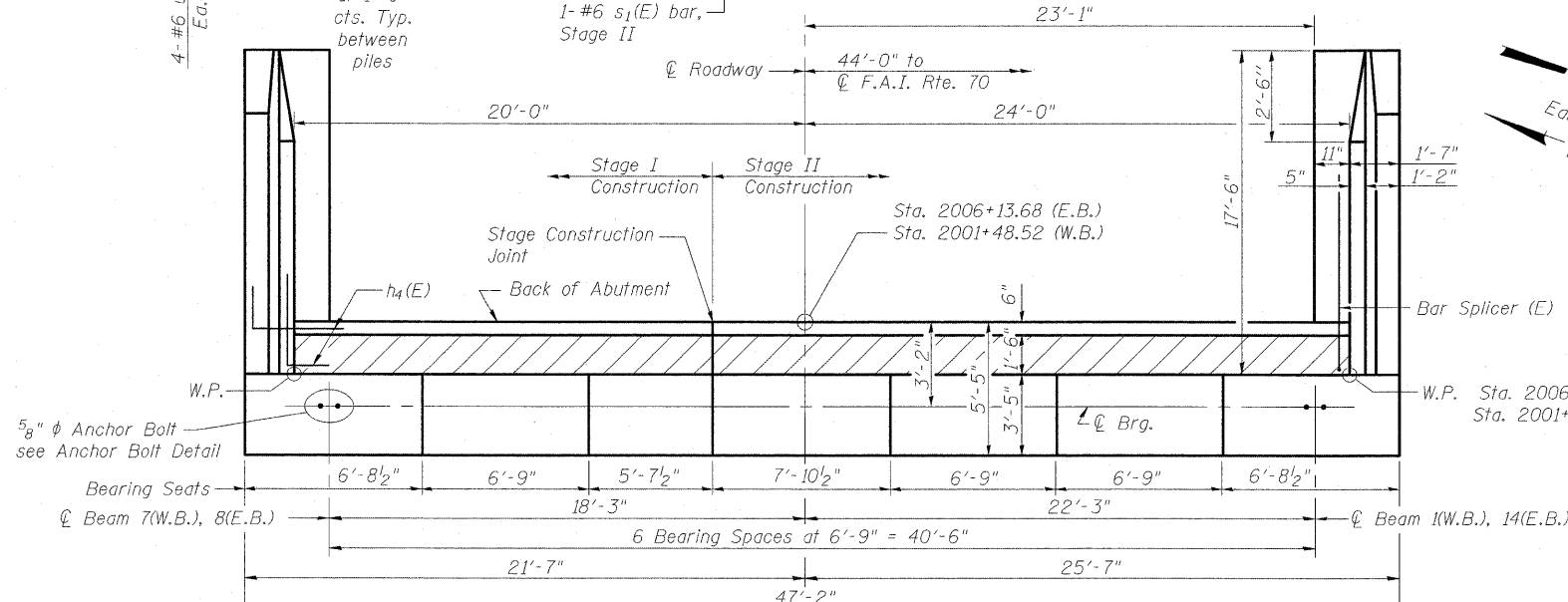
8-pairs #5 h<sub>4</sub>(E) bars Ea. End  
6-#5 h(E) bars E.F.  
See Sec. thru Abut.

\*Cut p<sub>3</sub>(E) bars to fit at W. Abut.  
Use the remaining p<sub>3</sub>(E) bar at the E. Abut. Stage II.



Elev.	West Abut.		East Abut.	
	Grade Elevations	Theoretical Grade Elevations Adjusted for Grinding	Grade Elevations	Theoretical Grade Elevations Adjusted for Grinding
A	527.64	527.66	527.65	527.67
B	527.99	528.01	528.00	528.02
C	527.55	527.57	527.56	527.58
D	526.22		526.23	
E	520.10		520.11	
F	520.26		520.25	
G	520.33		520.36	
H	520.42		520.36	
I	520.31		520.28	
J	520.17		520.16	
K	520.02		520.03	
L	516.52		516.53	

Notes:  
Top of Pile Elev. = 518.81 W. Abut. & 518.83 E. Abut.  
For Concrete Sealer application see sheet 42 of 58.  
E.F. indicates Each Face.  
For Section thru Abutment and Wingwalls see sheets 42 and 43 of 58.  
For details of Bar Splicers, see sheet 49 of 58.  
For details of piles and Concrete Encasement, see sheet 50 of 58.  
For bar details see sheet 40 of 58.  
For Bill of Materials see sheet 40 of 58.



PILE DATA

Type: HP 14x73  
Nominal Required Bearing: 505K (E. Abut.)  
361K (W. Abut.)  
Factored Resistance Available: 252K (E. Abut.)  
181K (W. Abut.)  
Est. Length: (81' W. Abut., 60' E. Abut.)  
No. Production Piles: 14 per Abut.  
No. Test Piles: 1 per Abut.

DESIGNED	B.B.
CHECKED	A.C.S.
DRAWN	W.J.S.
CHECKED	C.J.F. & B.B.

PLAN-PILE CAP



BERNARDIN  
LOCHMUELLER &  
ASSOCIATES, INC.

8 Oak Drive  
Maryville, IL 62062-5656  
Local (618) 288-4055  
Fax 618-288-4666

SHEET NO. 41 58 SHEETS	F.A.I. RTE. 70	SECTION (25-3)B	COUNTY EFFINGHAM	TOTAL SHEETS 1416	SHEET NO. 73
	SN 025-017 & 025-0108		CONTRACT NO. 74296		
FED. ROAD DIST. NO. 7 ILLINOIS FED. AID PROJECT 70					

WEST ABUTMENT (W.B.)  
EAST ABUTMENT (E.B.)  
S.N. 025-0107 & 025-0108