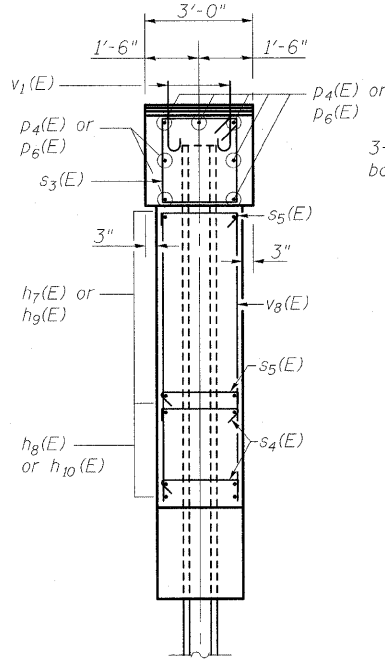


STATE OF ILLINOIS
DEPARTMENT OF TRANSPORTATION

Notes:
For Anchor Bolt & Side Retainer details, see sheet 33 of 58.
Space reinforcement in cap to miss anchor bolts.
Pour steps monolithically with cap.
For details of piles, see sheet 50 of 58.
If a portion of the pier wall or concrete encasement is under water, reinforcement may be placed underwater into forms. Concrete shall be tremied according to Article 503.08 of the Standard Specifications to an elevation of 1'-0" above the water line at the time of construction.
See sheet 44 of 58 for Bill of Materials.
See sheet 44 of 58 for Bar Details.
See sheet 49 of 58 for Bar Splicer and Mechanical Splicer details.
For Pile Encasement Details see sheet 50 of 58.

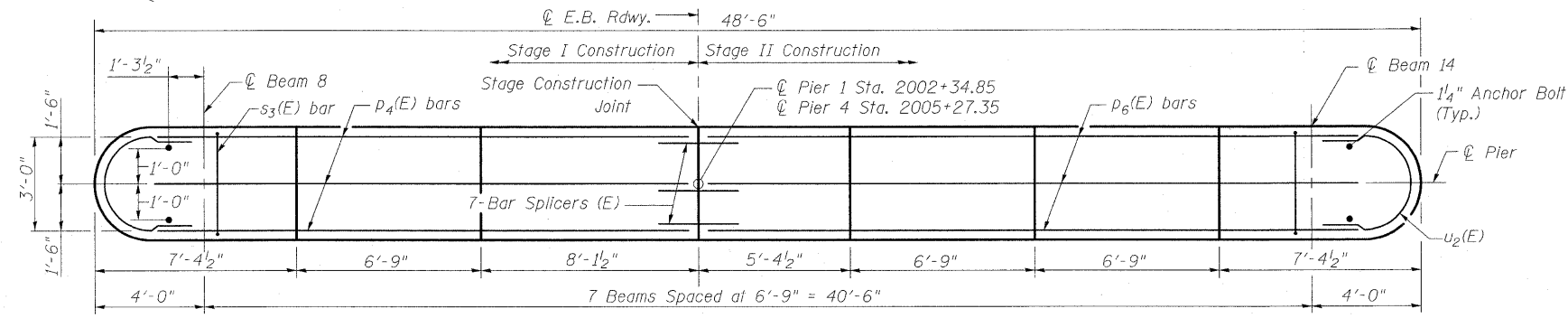
PILE DATA

Type: HP 14x73
Nominal Required Bearing: 578 k
Factored Resistance Available: 289 k
Est. Length: 94 Pier 1
81 Pier 4
No. Production Piles: 12 per pier
No. Test Piles: 1 per pier

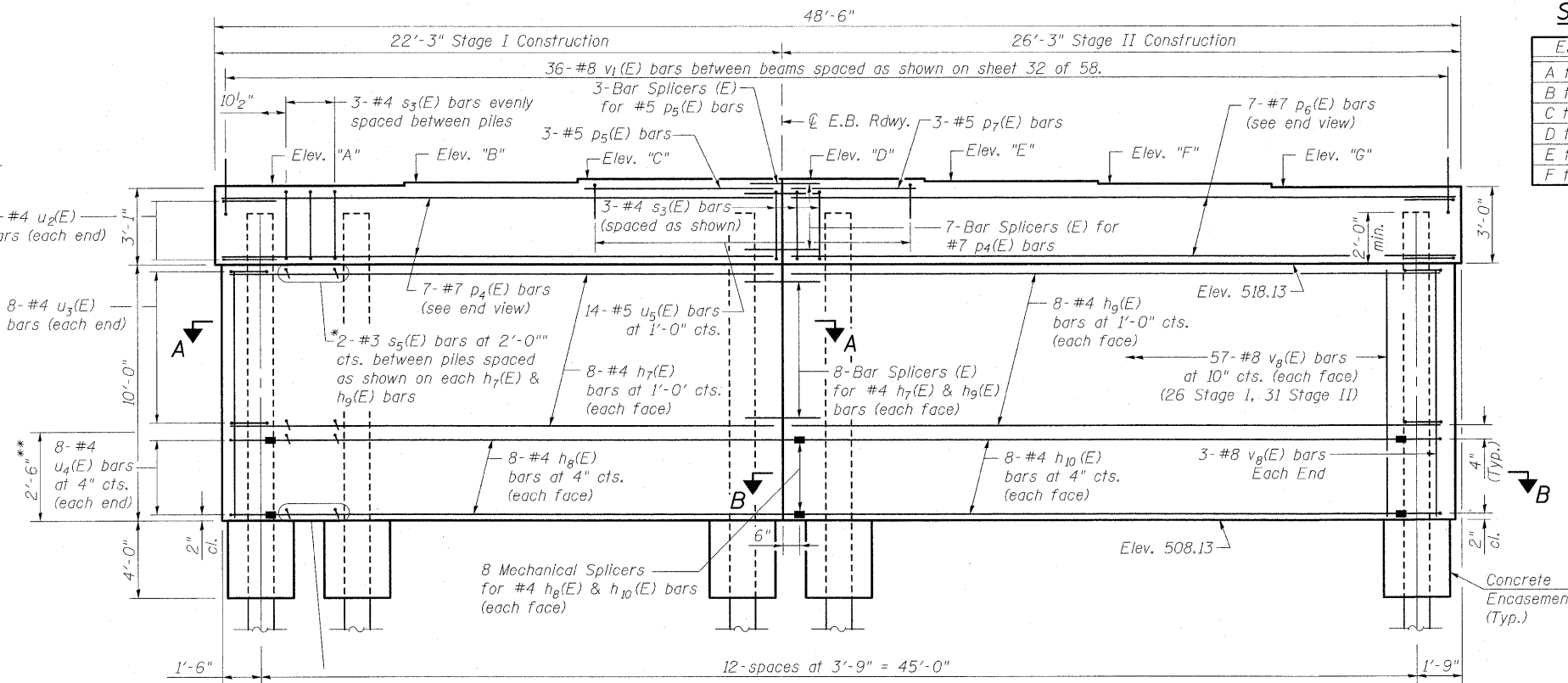


END VIEW

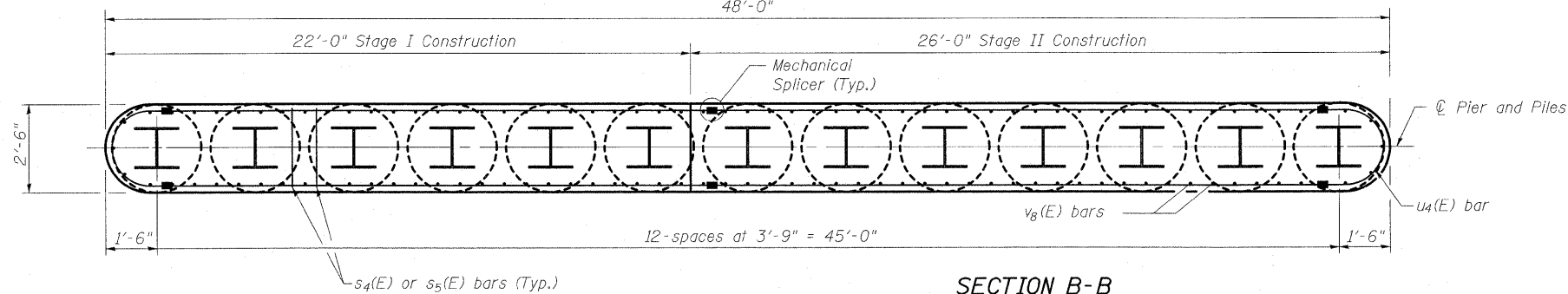
Note:
Top of Pile Elev. = 520.14



TOP PLAN



ELEVATION
(Looking East)



SECTION B-B

SECTION A-A

STEP HEIGHTS

Elev.	Pier 1	Pier 4
A to B	+1 1/2"	+1 3/4"
B to C	+1 3/4"	+1 3/8"
C to D	0"	+3/4"
D to E	-1 1/4"	-1 1/4"
E to F	-1 3/8"	-1 7/8"
F to G	-1 5/8"	-1 3/4"

ELEVATION DATA

Elev.	Pier 1	Pier 4
A	521.21	521.21
B	521.34	521.36
C	521.48	521.47
D	521.48	521.53
E	521.38	521.43
F	521.26	521.27
G	521.13	521.13

* Alternate the placement of 3" leg for s4(E) and s5(E) bars.
** Lap splicing of reinforcement shall not be allowed in this region.

DESIGNED	B.B.
CHECKED	A.C.S.
DRAWN	W.J.S.
CHECKED	C.J.F. & B.B.



**BERNARDIN
LOCHMUELLER &
ASSOCIATES, INC.**

3 Oak Drive
Maryville, IL 62062-5635
Local (618) 288-4655
Fax 618-288-4656

SHEET NO. 45 58 SHEETS	F.A.I. RTE. 70	SECTION (25-3)B	COUNTY EFFINGHAM	TOTAL SHEETS 1416	SHEET NO. 77
	SN 025-0107			CONTRACT NO. 74296	
FED. ROAD DIST. NO. 7 ILLINOIS FED. AID PROJECT 70					

**PIER 1 & 4 (E.B.)
STRUCTURE NO. 025-0107**