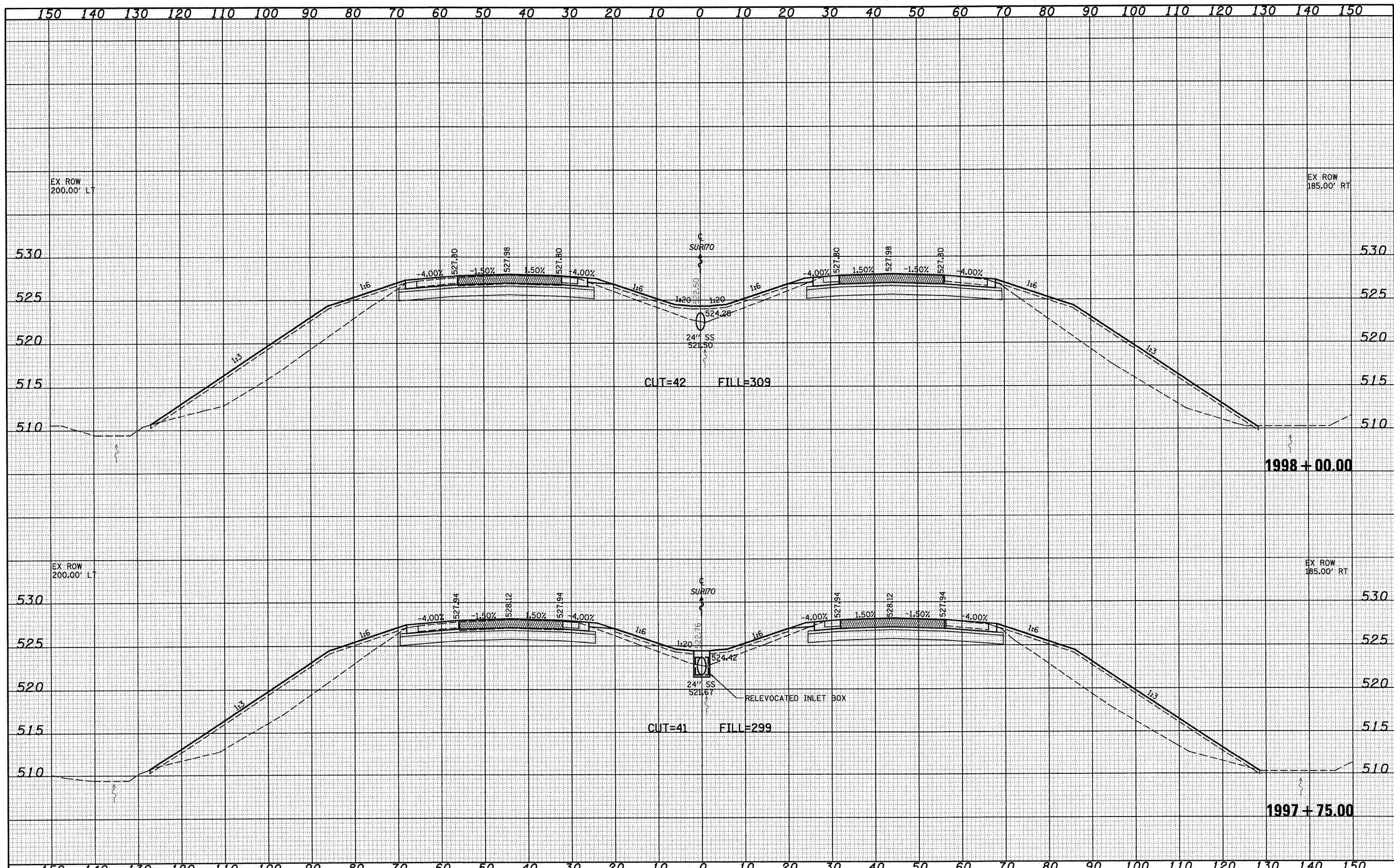


DATE	
BY	
SPANNED	
PLOTTED	
TEMPLATE	
NOTE BOOK	
AREAS	
CHECKED	
NO.	

DATE	
BY	
SPANNED	
PLOTTED	
TEMPLATE	
NOTE BOOK	
AREAS	
CHECKED	
NO.	



FILE NAME =	USER NAME = lnda	DESIGNED - ESW	REVISED -	STATE OF ILLINOIS DEPARTMENT OF TRANSPORTATION	CROSS SECTIONS	F.A.I. RTE.	SECTION	COUNTY	TOTAL SHEETS	SHEET NO.	
S:\Projects\408-000-DHY L111e Wabash\dgn\CADD Sheets\DT9-99\sh1-xsh1.dgn	PLOT SCALE = 20.0000' / IN.	DRAWN - LEC	REVISED -			70	(25-3)B	EFFINGHAM	1416	95	
	PLOT DATE = 2/9/2010	CHECKED - BRM	REVISED -			CONTRACT NO. 74296					
		DATE - 9-17-09	REVISED -			FED. ROAD DIST. NO. ILLINOIS FED. AID PROJECT					

SCALE: 1"=10' SHEET NO. 5 OF 34 SHEETS STA. 1997+75.00 TO STA. 1998+00.00