

PROP. ROADWAY A CURVE C20

PI STA. = 2059+30.08
 $\Delta = 55^\circ 59' 40''$ (LT)
 $D = 0^\circ 50' 35''$
 $R = 6,796.00'$
 $T = 3,613.08'$
 $L = 6,641.65'$
 $E = 900.75'$
 $e = 2.90\%$
 $T.R. = 45.00'/56.25'$
 $S.E. RUN = 87.00'/108.75'$
P.C. STA. = 2023+11.00
P.T. STA. = 2089+58.65
SE ATTAINED STA. 2022+14.00
TO STA 2023+46.00 (1.50% TO 2.90%)
SE REMOVED STA. 2089+22.40
TO STA 2091+27.15 (2.90% TO 1.50%)

PROP. ROADWAY B CURVE C121

PI STA. = 2058+88.72
 $\Delta = 60^\circ 36' 08''$ (LT)
 $D = 1^\circ 15' 05''$
 $R = 4,578.30'$
 $T = 2,675.46'$
 $L = 4,842.50'$
 $E = 724.43'$
 $e = 4.00\%$
 $T.R. = 45.00'/56.25'$
 $S.E. RUN = 120.00'/150.00'$
P.C. STA. = 2032+13.26
P.T. STA. = 2080+55.76
SE ATTAINED STA. 2030+88.26
TO STA 2032+53.26 (1.50% TO 4.00%)
SE REMOVED STA. 2080+05.76
TO STA 2082+12.01 (4.00% TO 1.50%)

PROP. ROADWAY B CURVE C122

PI STA. = 2086+81.69
 $\Delta = 1^\circ 01' 51''$ (RT)
 $D = 0^\circ 24' 33''$
 $R = 14,000.00'$
 $T = 125.93'$
 $L = 251.85'$
 $E = 0.57'$
 $e = 4.00\%$
P.C. STA. = 2085+55.76
P.T. STA. = 2088+07.61

PROP. ROADWAY C CURVE C46

PI STA. = 15+17.42
 $\Delta = 8^\circ 41' 49''$ (RT)
 $D = 0^\circ 53' 51''$
 $R = 6,384.82'$
 $T = 485.50'$
 $L = 969.14'$
 $E = 18.43'$
 $e = 2.90\%$
P.C. STA. = 10+31.92
P.T. STA. = 20+01.06

PROP. ROADWAY D CURVE C47

PI STA. = 5049+31.67
 $\Delta = 11^\circ 25' 30''$ (LT)
 $D = 1^\circ 20' 40''$
 $R = 4,262.00'$
 $T = 426.34'$
 $L = 849.85'$
 $E = 21.27'$
 $e = 2.90\%$
P.C. STA. = 5045+05.33
P.T. STA. = 5053+55.18

PROP. FRONTAGE ROAD 2 CURVE FR04

PI STA. = 16+80.58
 $\Delta = 17^\circ 37' 24''$ (LT)
 $D = 11^\circ 27' 33''$
 $R = 500.00'$
 $T = 77.51'$
 $L = 153.79'$
 $E = 5.97'$
 $e = 2.90\%$
P.C. STA. = 16+03.07
P.T. STA. = 17+56.86

PROP. FRONTAGE ROAD 2 CURVE FR05

PI STA. = 22+26.02
 $\Delta = 3^\circ 27' 51''$ (RT)
 $D = 1^\circ 41' 07''$
 $R = 3,400.00'$
 $T = 102.82'$
 $L = 205.57'$
 $E = 1.55'$
 $e = 2.90\%$
P.C. STA. = 21+23.21
P.T. STA. = 23+28.78

PROP. FRONTAGE ROAD 2 CURVE FR06

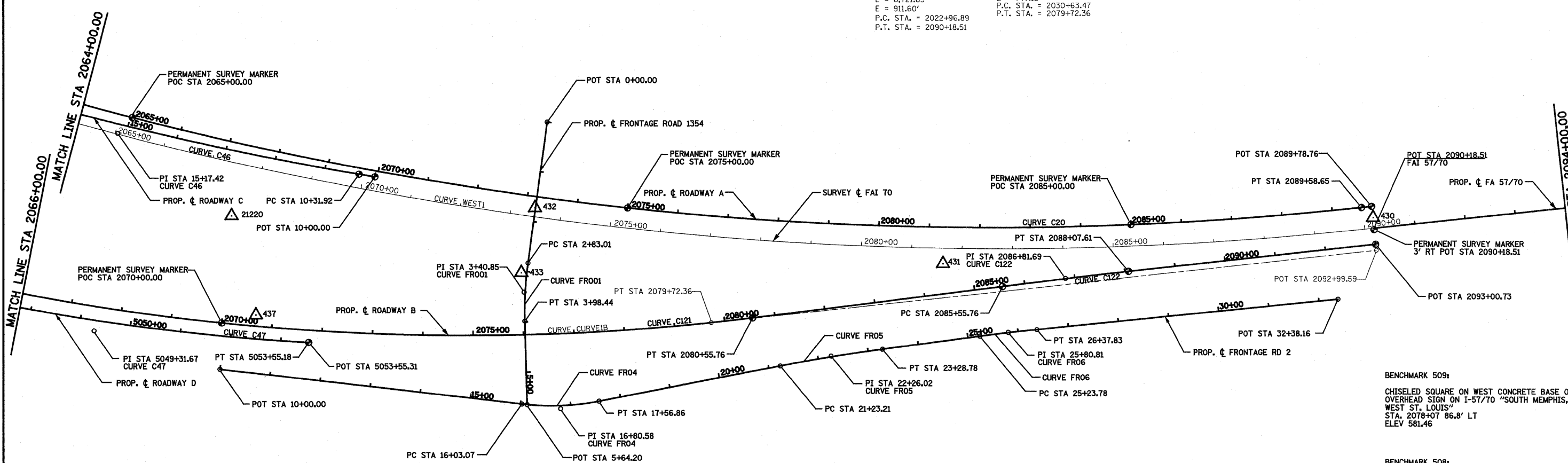
PI STA. = 25+80.81
 $\Delta = 1^\circ 55' 19''$ (RT)
 $D = 1^\circ 41' 07''$
 $R = 3,400.00'$
 $T = 57.03'$
 $L = 114.04'$
 $E = 0.48'$
 $e = 2.90\%$
P.C. STA. = 25+23.78
P.T. STA. = 26+37.83

PROP. FRONTAGE ROAD 1354 CURVE FR001

PI STA. = 3+40.85
 $\Delta = 9^\circ 14' 24''$ (LT)
 $D = 8^\circ 00' 17''$
 $R = 715.78'$
 $T = 57.84'$
 $L = 115.43'$
 $E = 2.33'$
 $e = 2.90\%$
P.C. STA. = 2+83.01
P.T. STA. = 3+98.44

EXIST. SURVEY ϕ FAI 70
EXIST. CURVE WEST1
PI STA. = 2059+53.47
 $\Delta = 55^\circ 59' 40''$ (LT)
 $D = 0^\circ 49' 59''$
 $R = 6,877.84'$
 $T = 3,656.59'$
 $L = 6,721.63'$
 $E = 911.60'$
P.C. STA. = 2022+96.89
P.T. STA. = 2090+18.51

EXIST. ROADWAY B
EXIST. CURVE CURVE1B
PI STA. = 2057+83.65
 $\Delta = 61^\circ 25' 59''$ (LT)
 $D = 1^\circ 15' 05''$
 $R = 4,578.30'$
 $T = 2,720.18'$
 $L = 4,908.89'$
 $E = 747.13'$
P.C. STA. = 2030+63.47
P.T. STA. = 2079+72.36



BENCHMARK 509:
CHISELED SQUARE ON WEST CONCRETE BASE OF OVERHEAD SIGN ON I-57/70 "SOUTH MEMPHIS, WEST ST. LOUIS"
STA. 2078+07 86.8' LT
ELEV 581.46

BENCHMARK 508:
CHISELED SQUARE ON MEDIAN INLET I-57/70
STA 2092+94 0.7' RT
ELEV 592.11

BENCHMARK 2065:
RAILROAD SPIKE IN GUARDRAIL POST SOUTHBOUND I-57/I-70 WESTBOUND
EAST SIDE STA 2065+00
ELEV 574.26

BENCHMARK 2073+50:
CHISELED SQUARE AT SOUTHEAST CORNER OF HEADWALL OF UNNAMED COUNTRY ROAD UNDER SOUTHBOUND I-57 / WESTBOUND I-70
STA 2073+50
ELEV 557.79

BENCHMARK 2088:
CHISELED SQUARE WEST EDGE OF WEST CONCRETE SINE POST FOUNDATION EAST SIDE OF NORTHBOUND I-57 / EASTBOUND I-70. FAYETTE AVENUE EXIT 159, IL 32/33 EXIT 160, US 45 EXIT 162.
STA. 2086+60, 86' RT
ELEV 588.77

PROPOSED WB FAI 70 SOUTH TRI LEVEL ROADWAY A

DESCRIPTION	COORDINATE	
	NORTHING	EASTING
POT STA 2015+00.00	883159.18	911095.20
PC STA 2023+17.00	883440.97	911862.07
PI STA 2059+30.08	884687.13	912531.44
PT STA 2089+58.65	888195.46	915117.10
POT STA 2089+78.76	888214.99	916121.91

PROPOSED SB FAI 57 ROADWAY C

DESCRIPTION	COORDINATE	
	NORTHING	EASTING
POT STA 10+00.00	886376.49	915391.05
PC STA 10+31.92	886348.76	915375.24
PI STA 15+17.42	885927.02	915134.72
POT STA 20+01.06	885546.51	914833.19

PROPOSED FRONTAGE ROAD 1354

DESCRIPTION	COORDINATE	
	NORTHING	EASTING
POT STA 0+00.00	886735.47	915404.90
PC STA 2+83.01	886603.71	915655.37
PI STA 3+40.85	886576.78	915706.56
PT STA 3+98.44	886558.42	915761.41
POT STA 5+64.20	886505.80	915918.59

PROPOSED FRONTAGE ROAD 2

DESCRIPTION	COORDINATE	
	NORTHING	EASTING
POT STA 10+00.00	885957.04	915644.62
PC STA 16+03.07	886496.55	915914.09
PI STA 16+80.58	886576.78	915948.73
PT STA 17+56.86	886642.46	915960.74
PC STA 21+23.21	887004.38	916017.53
PI STA 22+26.02	887105.95	916033.46
PT STA 23+28.78	887206.38	916055.51
PC STA 25+23.78	887396.85	916097.32
PI STA 25+80.81	887452.55	916109.55
PT STA 26+31.83	887507.81	916123.64
POT STA 32+38.16	888089.54	916271.96

GROUND COORDINATES FOR PERMANENT SURVEY MARKERS

DESCRIPTION	COORDINATE	
	NORTHING	EASTING
ROADWAY A		
POC STA 2065+00.00	885964.98	915114.97
POC STA 2075+00.00	886827.22	915619.69
POC STA 2085+00.00	887754.14	915992.53
PT STA 2089+58.65	888195.46	916117.10
POT STA 2089+78.76	888214.99	916121.91
ROADWAY B		
POC STA 2070+00.00	885991.77	915559.07
PT STA 2080+55.76	886985.35	915909.07
PC STA 2085+55.76	887472.93	916019.84
PT STA 2088+07.61	887718.00	916077.83
POT STA 2093+00.73	888196.83	916195.71
ROADWAY C		
POT STA 10+00.00	886376.49	915391.05
PC STA 10+31.92	886348.76	915375.24
ROADWAY D		
PT STA 5053+55.18	886140.66	915654.70
POT STA 5053+55.31	886140.78	915654.75
I-57/70		
POT STA 2090+18.51	888204.48	916164.64

PROPOSED EB FAI 70 ROADWAY B

DESCRIPTION	COORDINATE	
	NORTHING	EASTING
PC STA 2032+13.26	883612.08	912752.40
PI STA 2058+88.72	884376.37	915316.37
PT STA 2080+55.76	886985.35	915909.07
PC STA 2085+55.76	887472.93	916019.84
PT STA 2086+81.69	887595.73	916047.73
PT STA 2088+07.61	887718.00	916077.83
POT STA 2093+00.73	888196.83	916195.71

PROPOSED NB FAI 57 ROADWAY D

DESCRIPTION	COORDINATE	
	NORTHING	EASTING
PC STA 5045+05.33	885397.50	915245.33
PI STA 5049+31.67	885748.61	915487.18
PT STA 5053+55.18	886140.66	915654.70
POT STA 5053+55.31	886140.78	915654.75

SURVEY ϕ FAI 70

DESCRIPTION	COORDINATE	
	NORTHING	EASTING
POT STA 1966+63.14	881449.64	906570.31
PC STA 2022+96.89	883392.73	911858.36
PI STA 2059+53.47	884653.89	915290.58
POT STA 2090+18.51	888204.48	916164.64

CONTROL POINTS

CONTROL POINT	COORDINATE	
	NORTHING	EASTING
437	886061.10	915567.38
21220	886082.88	915366.17
432	886654.25	915557.06
433	886584.80	915668.79
431	887377.45	915937.24
430	888210.11	916143.88

PROPOSED FAI 57/70

DESCRIPTION	COORDINATE	
	NORTHING	EASTING
POT STA 2090+18.51	888204.48	916164.64

PERMANENT SURVEY MARKER ϕ

