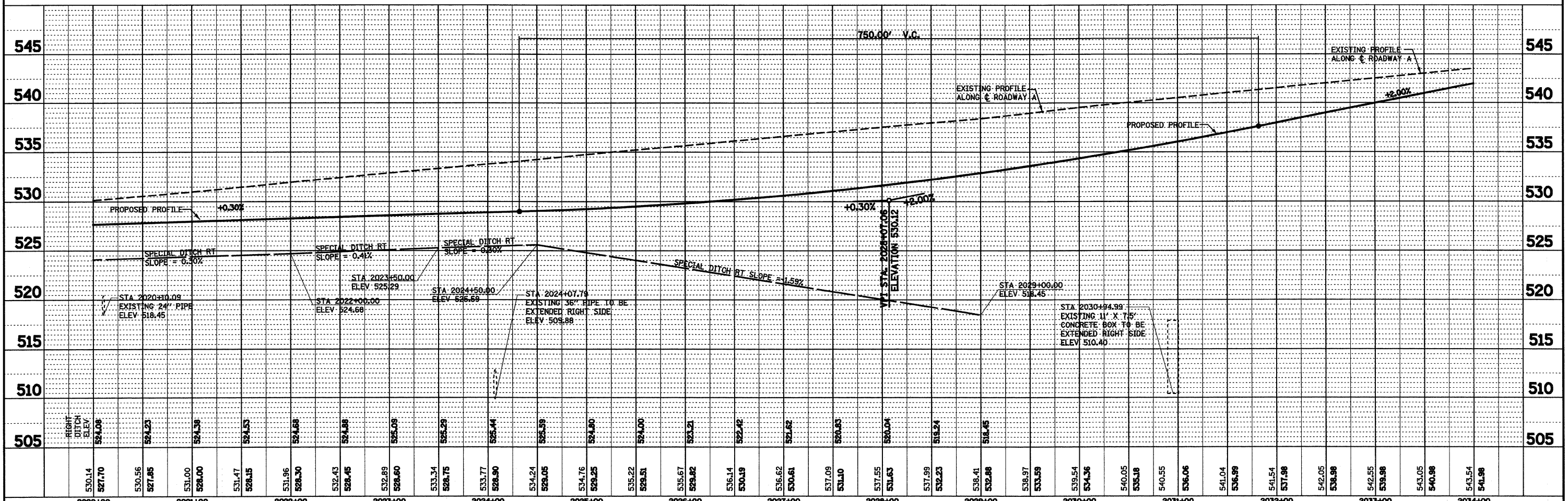
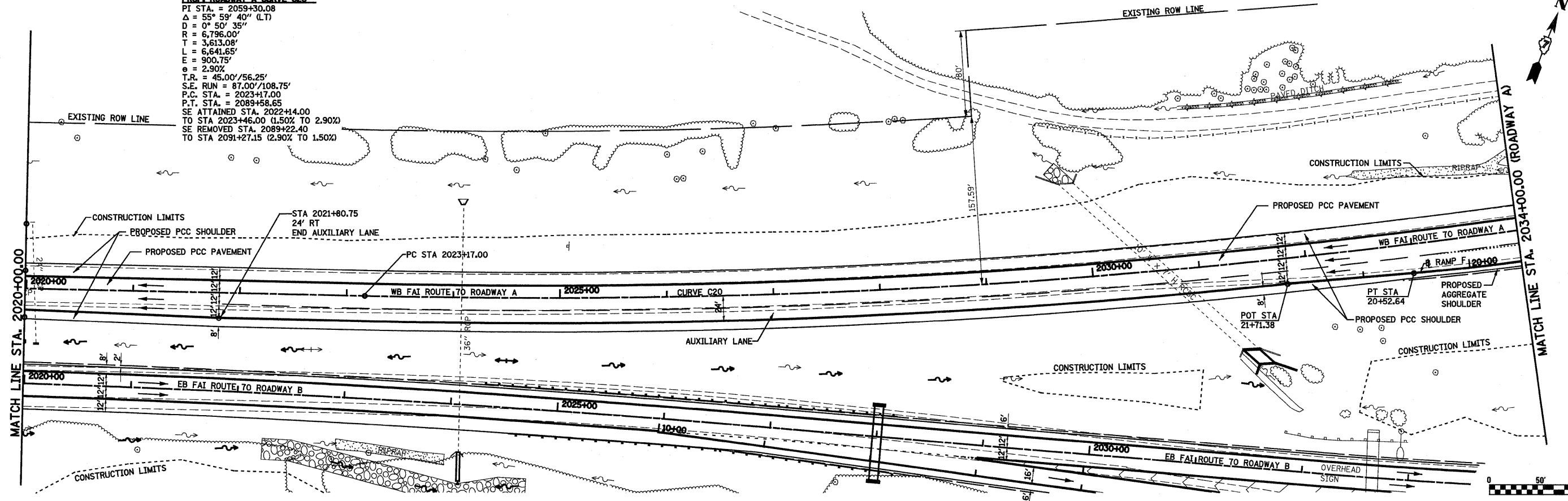


PLAN	SURVEYED	BY	DATE
	ALIGNED		
	GRADES CHECKED		
	STRUCTURE NOTATIONS		
	NO. NOTED		
	NO. CHECKED		
	NO. FILE NAME		

PROFILE	SURVEYED	BY	DATE
	GRADES CHECKED		
	STRUCTURE NOTATIONS		
	NO. NOTED		
	NO. CHECKED		
	NO. FILE NAME		

PROP. ROADWAY A CURVE C20
 PI STA. = 2059+30.08
 $\Delta = 55^\circ 59' 40''$ (LT)
 $R = 6,796.00'$
 $T = 3,613.08'$
 $L = 6,641.65'$
 $E = 900.75'$
 $e = 2.90\%$
 $T.R. = 45.00' / 56.25'$
 $S.E. RUN = 87.00' / 108.75'$
 $P.C. STA. = 2023+17.00$
 $P.T. STA. = 2089+58.65$
 $SE ATTAINED STA. 2022+14.00$
 $TO STA 2023+46.00 (1.50\% TO 2.90\%)$
 $SE REMOVED STA. 2089+22.40$
 $TO STA 2091+27.15 (2.90\% TO 1.50\%)$



FILE NAME =	USER NAME = paul	DESIGNED - JWS	REVISED -	STATE OF ILLINOIS DEPARTMENT OF TRANSPORTATION	PLAN AND PROFILE, SOUTH TRI LEVEL ROADWAY A	F.A.I. RTE. 57/70	SECTION (25-3R)	COUNTY EFFINGHAM	TOTAL SHEETS 1416	SHEET NO. 181	
PLOT SCALE = 1/8" = 100.0000' / IN.	CHECKED - BRM	REVISIONS	SCALE: 1"=50'			SHEET NO. 10 OF 27 SHEETS	STA. 2020+00.00 TO STA. 2034+00.00	FED. ROAD DIST. NO.	ILLINOIS FED. AID PROJECT	CONTRACT NO. 74296	
PLOT DATE = 2/11/2010	DATE - 2-25-08	REVISIONS									