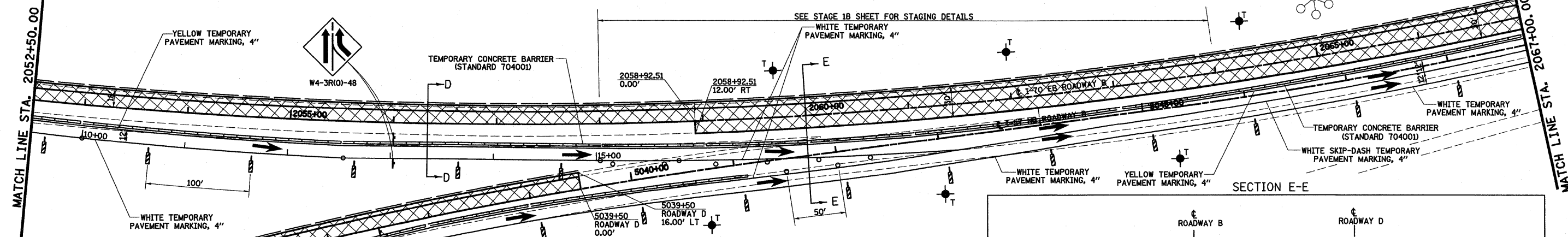
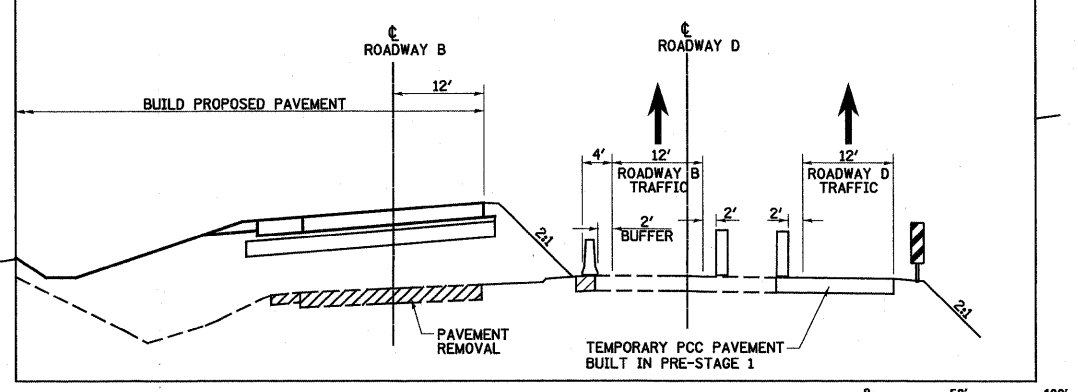
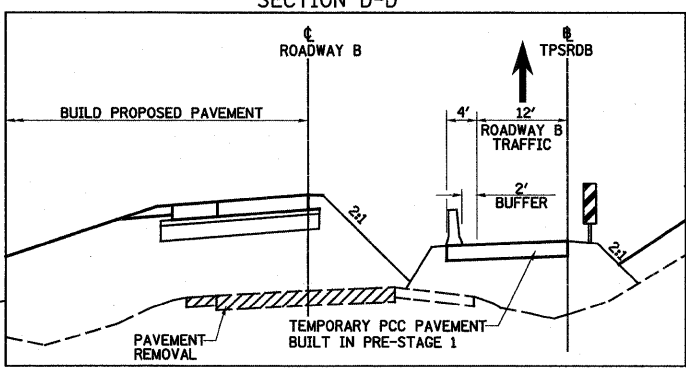


- LEGEND**
- TEMPORARY PCC PAVEMENT
  - TEMPORARY HOT-MIX ASPHALT RAMP
  - CONSTRUCTION THIS STAGE
  - SIGN
  - DIRECTION OF TRAFFIC
  - TYPE II BARRICADES OR DRUMS WITH MONO-DIRECTIONAL STEADY BURNING LIGHTS
  - VERTICAL PANEL
  - TYPE III BARRICADES
  - ARROW BOARD
  - TEMPORARY CONCRETE BARRIER
  - TEMPORARY WOOD POLE, 55 FEET, CLASS 4 WITH 250W HPS LUMINAIRE, 45 FEET MOUNTING HEIGHT
  - TEMPORARY WOOD POLE, 55 FEET, CLASS 4
  - EXISTING LIGHTING UNIT USED AS TEMPORARY



NOTE:  
EXISTING INLET IN THE STAGE 1 TRAFFIC LANE SHALL BE CAPPED WITH METAL PLATES DURING STAGE 1 AS DIRECTED BY THE ENGINEER. COST INCLUDED IN THE OTHER ITEMS OF WORK.



|                                 |                  |                |           |   |   |   |         |           |              |           |  |
|---------------------------------|------------------|----------------|-----------|---|---|---|---------|-----------|--------------|-----------|--|
| FILE NAME =                     | USER NAME = paul | DESIGNED - JWS | REVISED - | <b>STATE OF ILLINOIS<br/>DEPARTMENT OF TRANSPORTATION</b> | <b>MAINTENANCE OF TRAFFIC, STAGE 1, SOUTH TRI LEVEL</b> | F.A.I. RTE.                                   | SECTION | COUNTY    | TOTAL SHEETS | SHEET NO. |  |
| 5:\projects\103\10372\10372.dwg |                  | DRAWN - LEC    | REVISED - |   |   | 57/70   | (25-3)R | EFFINGHAM | 1416         | 223       |  |
| PLOT SCALE = 1/8" = 1' IN.      |                  | CHECKED - BRM  | REVISED - |   |   | CONTRACT NO. 74296                            |         |           |              |           |  |
| PLOT DATE = 3/18/2010           |                  | DATE - 2-29-08 | REVISED - |   |   | FED. ROAD DIST. NO. ILLINOIS FED. AID PROJECT |         |           |              |           |  |