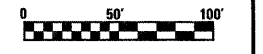
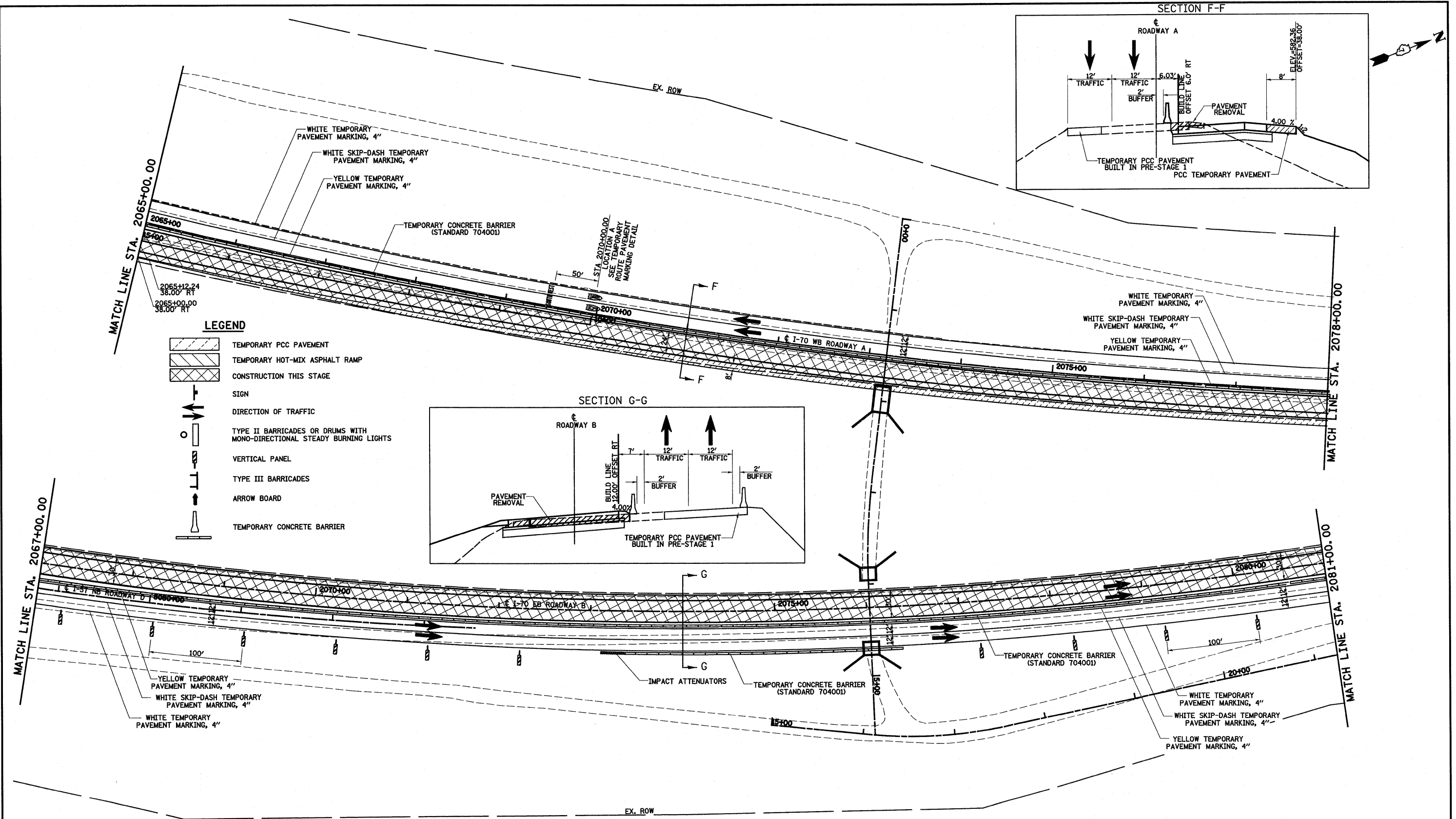


LEGEND

- TEMPORARY PCC PAVEMENT
- TEMPORARY HOT-MIX ASPHALT RAMP
- CONSTRUCTION THIS STAGE
- SIGN
- DIRECTION OF TRAFFIC
- TYPE II BARRICADES OR DRUMS WITH MONO-DIRECTIONAL STEADY BURNING LIGHTS
- VERTICAL PANEL
- TYPE III BARRICADES
- ARROW BOARD
- TEMPORARY CONCRETE BARRIER



FILE NAME E:\Projects\2008\2008-08-18\2008-08-18.dwg	USER NAME = paul	DESIGNED - JWS	REVISED -	STATE OF ILLINOIS DEPARTMENT OF TRANSPORTATION	MAINTENANCE OF TRAFFIC, STAGE 1, SOUTH TRI LEVEL	F.A.I. RTE. 57/70	SECTION 25-3R	COUNTY EFFINGHAM	TOTAL SHEETS 1416	SHEET NO. 224		
PLOT SCALE = 1/8" = 10' / IN.	DRAWN - LEC	REVISOR -	SCALE: 1"=50'			SHEET NO. 11 OF 15 SHEETS	STA. 2067+00.00 TO STA. 2081+00.00	CONTRACT NO. 74296				
PLOT DATE = 3/23/2010	CHECKED - BRM	REVISOR -	FED. ROAD DIST. NO. ILLINOIS FED. AID PROJECT									
	DATE - 2-29-08	REVISOR -										