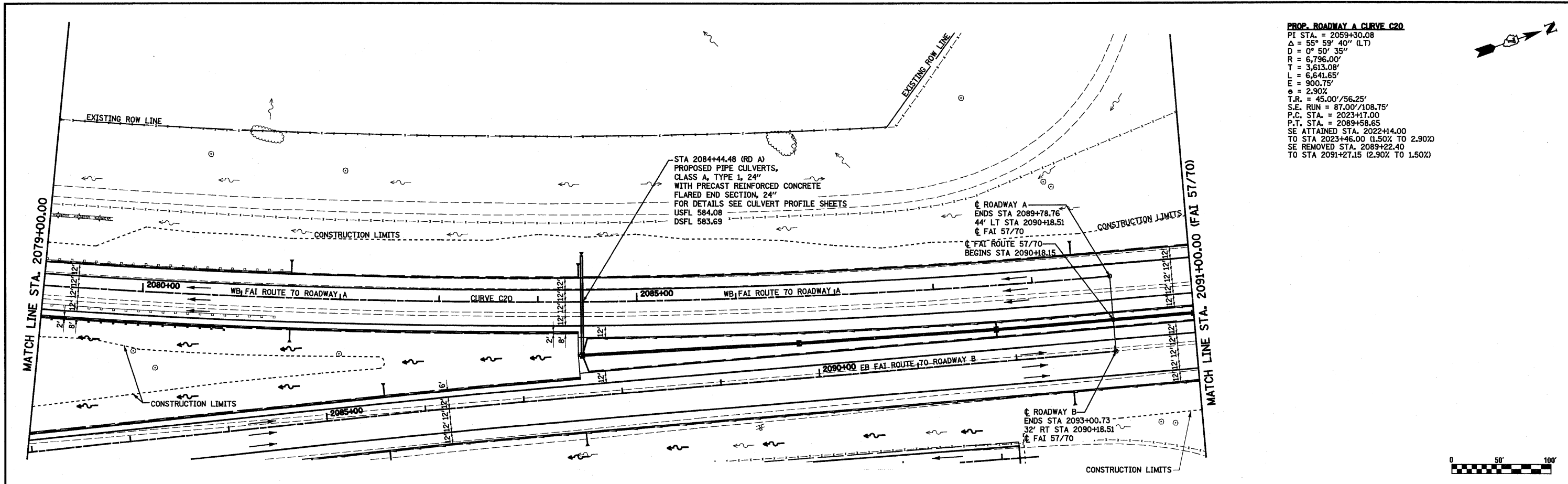
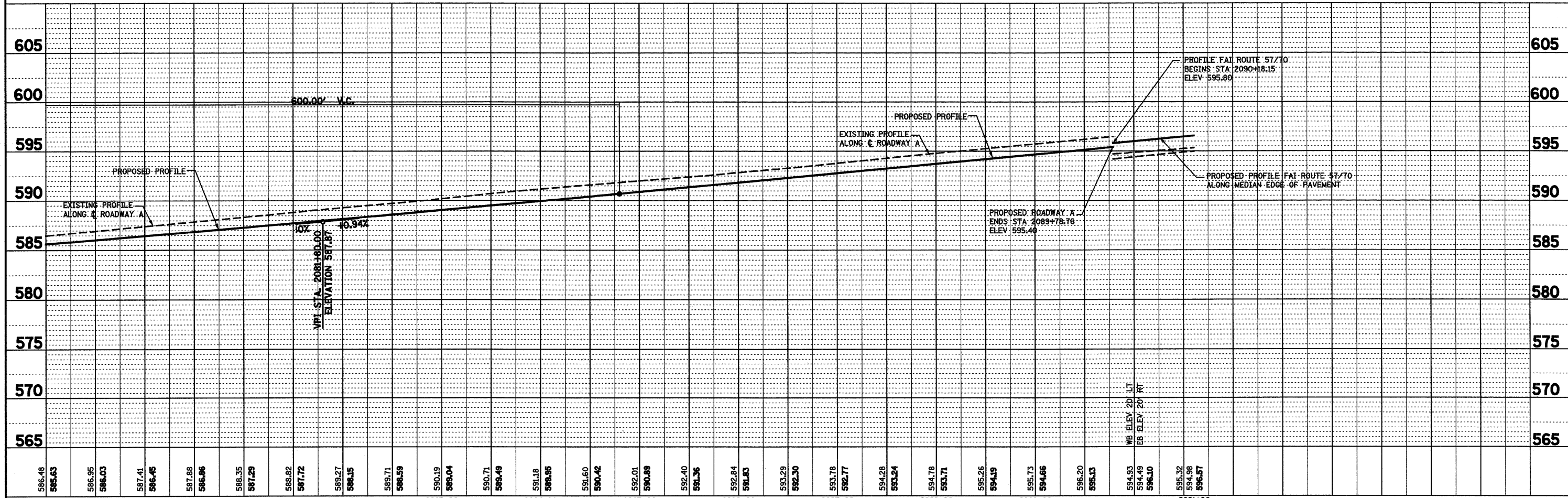
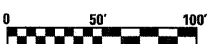


PLAN  
 REVISIONS  
 PLOTTED  
 ALIGNED CHECKED  
 NOTE BOOK NO.  
 DATE

PROFILE  
 REVISIONS  
 PLOTTED  
 GRADES CHECKED  
 NOTE BOOK NO.  
 DATE



**PROP. ROADWAY A CURVE C20**  
 PI STA. = 2059+30.08  
 $\Delta = 55^\circ 59' 40''$  (LT)  
 $D = 0^\circ 50' 35''$   
 $R = 6,796.00'$   
 $T = 3,613.08'$   
 $L = 6,641.65'$   
 $E = 900.75'$   
 $e = 2.90\%$   
 $T.R. = 45.00'/56.25'$   
 $S.E. RUN = 87.00'/108.75'$   
 $P.C. STA. = 2023+17.00$   
 $P.T. STA. = 2089+58.65$   
 $SE ATTAINED STA. 2022+14.00$   
 TO STA 2023+46.00 (1.50% TO 2.90%)  
 SE REMOVED STA. 2089+22.40  
 TO STA 2091+27.15 (2.90% TO 1.50%)



FILE NAME = S:\Projects\461\0717-78.dwg	USER NAME = paul	DESIGNED - JWS	REVISED -	STATE OF ILLINOIS DEPARTMENT OF TRANSPORTATION	DRAINAGE PLAN AND PROFILE, SOUTH TRI LEVEL ROADWAY A	F.A.I. RTE. 57/70	SECTION (25-3)R	COUNTY EFFINGHAM	TOTAL SHEETS 1416	SHEET NO. 273
PLOT SCALE = 1/8"=1' IN.	CHECKED - BRM	REVISIONS	CONTRACT NO. 74296							
PLOT DATE = 2/11/2010	DATE - 2-25-08	REVISIONS	FED. ROAD DIST. NO. ILLINOIS FED. AID PROJECT							
SCALE: 1"=50'	SHEET NO. 14 OF 27 SHEETS	STA. 2079+00.00 TO STA. 2091+00.00								