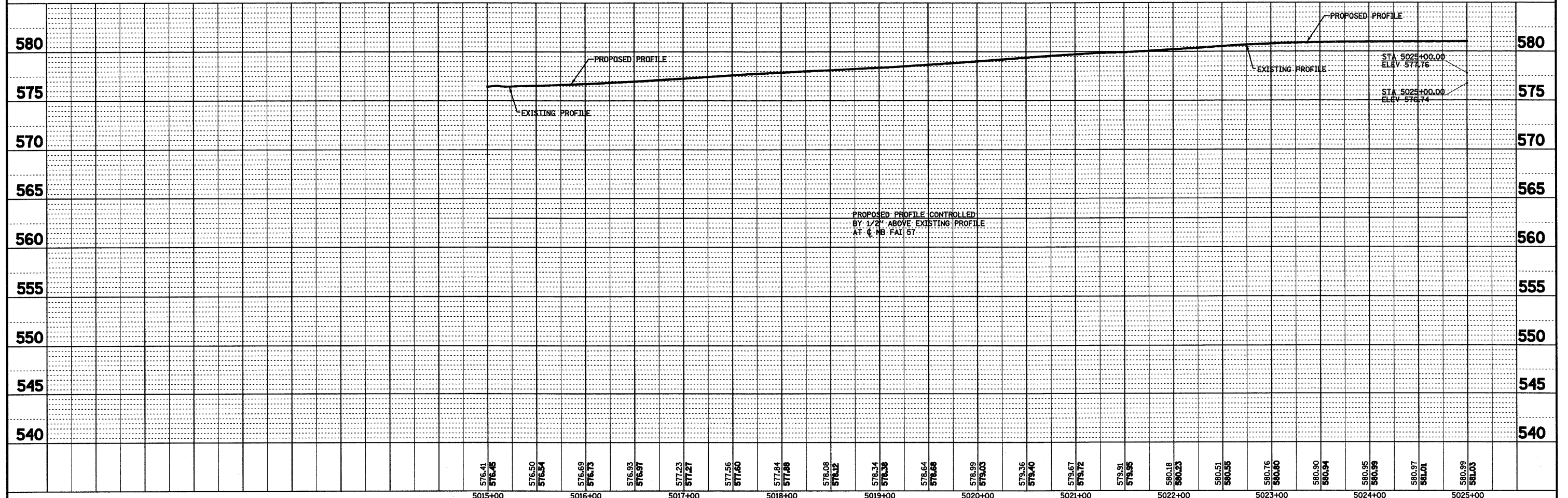
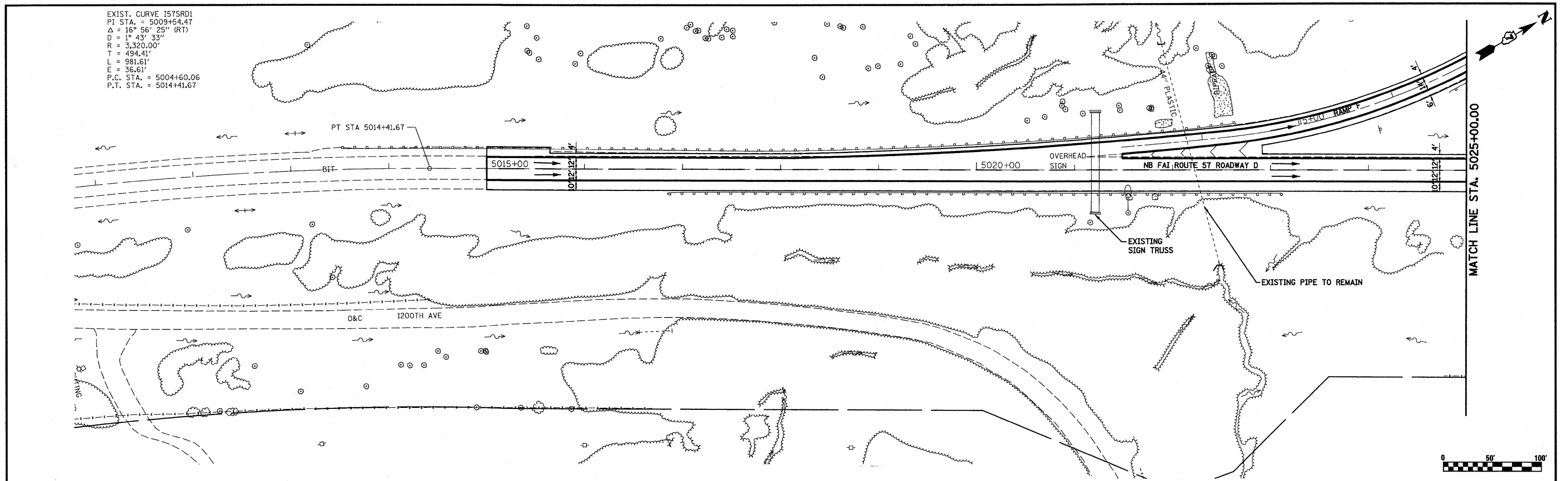


EXIST. CURVE I57SRD1
 PI STA. = 5009+54.47
 $\Delta = 16^\circ 56' 25''$ (RT)
 $D = 1^\circ 43' 33''$
 $R = 3,320.00'$
 $T = 494.41'$
 $L = 981.61'$
 $E = 36.61'$
 P.C. STA. = 5004+60.06
 P.T. STA. = 5014+41.67

PLAN	REVISIONS	DATE
NO.		
NO.		
NO.		
NO.		
NO.		
NO.		
NO.		
NO.		
NO.		
NO.		

PROFILE	REVISIONS	DATE
NO.		
NO.		
NO.		
NO.		
NO.		
NO.		
NO.		
NO.		
NO.		
NO.		



FILE NAME =	USER NAME = paul	DESIGNED - JWS	REVISED -	STATE OF ILLINOIS DEPARTMENT OF TRANSPORTATION	DRAINAGE PLAN AND PROFILE, SOUTH TRI LEVEL ROADWAY D			F.A.I. RTE. 57/70	SECTION (25-3)R	COUNTY EFFINGHAM	TOTAL SHEETS 1416	SHEET NO. 277
PLOT SCALE = 1/80.00000 / IN.	CHECKED - BRM	REVISED -	REVISED -		SCALE: 1"=50'	SHEET NO. 18 OF 27 SHEETS	STA. 5015+00.00 TO STA. 5025+00.00	CONTRACT NO. 74296				
PLOT DATE = 2/11/2010	DATE - 2-25-08	REVISED -	REVISED -		FED. ROAD DIST. NO. ILLINOIS FED. AID PROJECT							