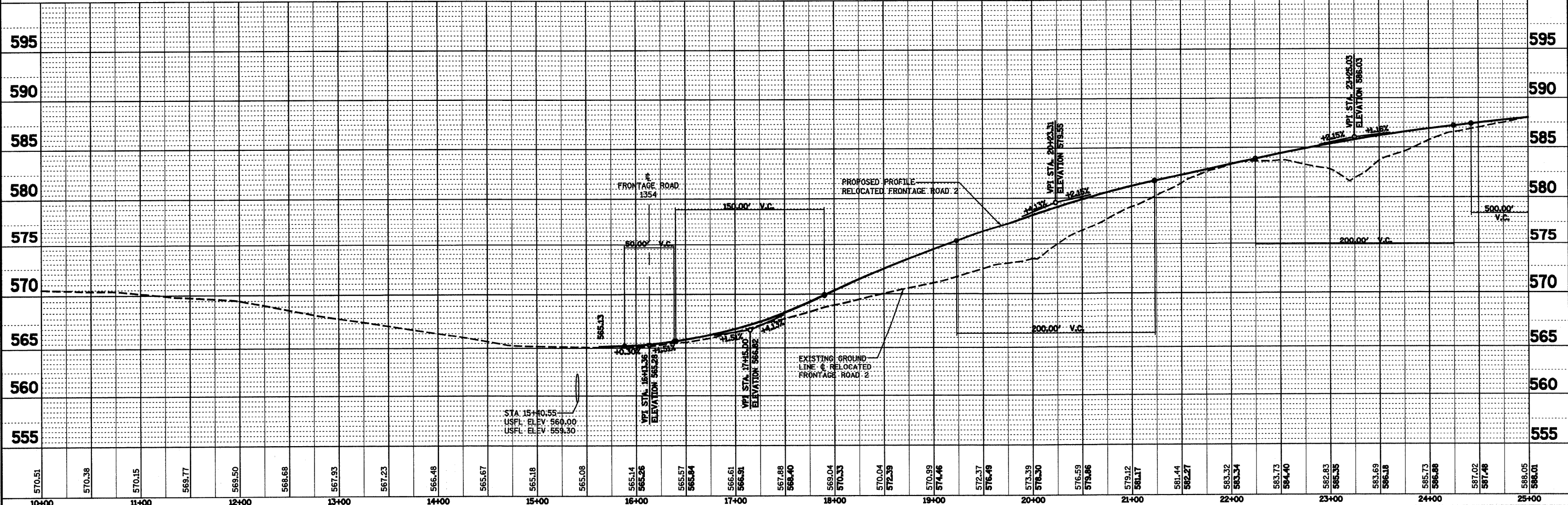
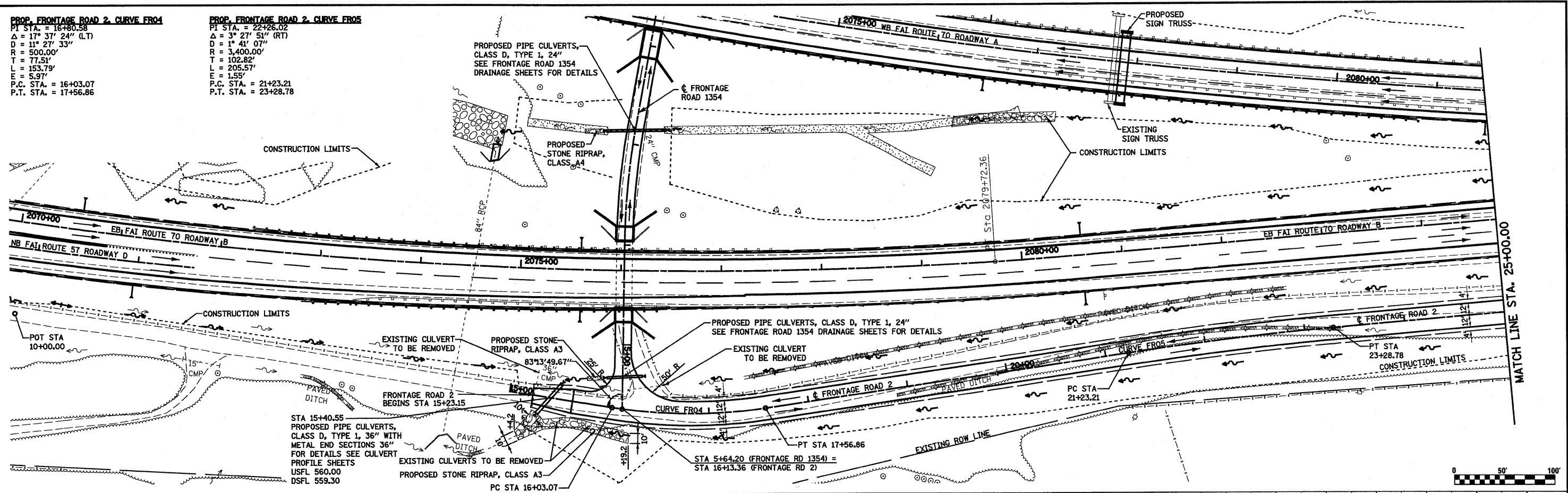


PROP. FRONTAGE ROAD 2, CURVE FR04
 PI STA. = 16+80.58
 $\Delta = 17^\circ 37' 24''$ (LT)
 D = 119.27' 33"
 R = 500.00'
 T = 77.51'
 L = 153.79'
 E = 5.97'
 P.C. STA. = 16+03.07
 P.T. STA. = 17+56.86

PROP. FRONTAGE ROAD 2, CURVE FR05
 PI STA. = 22+26.02
 $\Delta = 3^\circ 27' 51''$ (RT)
 D = 1^\circ 41' 07"
 R = 3,400.00'
 T = 102.82'
 L = 205.57'
 E = 1.55'
 P.C. STA. = 21+23.21
 P.T. STA. = 23+28.78



PROFILE	SERIALIZED	DATE
NOTE BOOK	GRADES CHECKED	
NO.	STRUCTURE NOTATIONS CHECKED	

FILE NAME =	USER NAME = paul	DESIGNED - JWS	REVISED -	STATE OF ILLINOIS DEPARTMENT OF TRANSPORTATION	DRAINAGE PLAN AND PROFILE, FRONTAGE ROAD 2			F.A.I. RTE.	SECTION	COUNTY	TOTAL SHEETS	SHEET NO.
S:\Projects\482\4827257-7\4827257-7\Drawings\21 Frontage Rd.dwg		DRAWN - PDB	REVISED -		SCALE: 1"=50'	SHEET NO. 26 OF 27 SHEETS	STA. 15+23.00 TO STA. 25+00.00	57/70	(25-3)R	EFFINGHAM	1416	285
		CHECKED - BRM	REVISED -					FED. ROAD DIST. NO.	ILLINOIS FED. AID PROJECT	CONTRACT NO. 74296		
		DATE - 2-25-08	REVISED -									