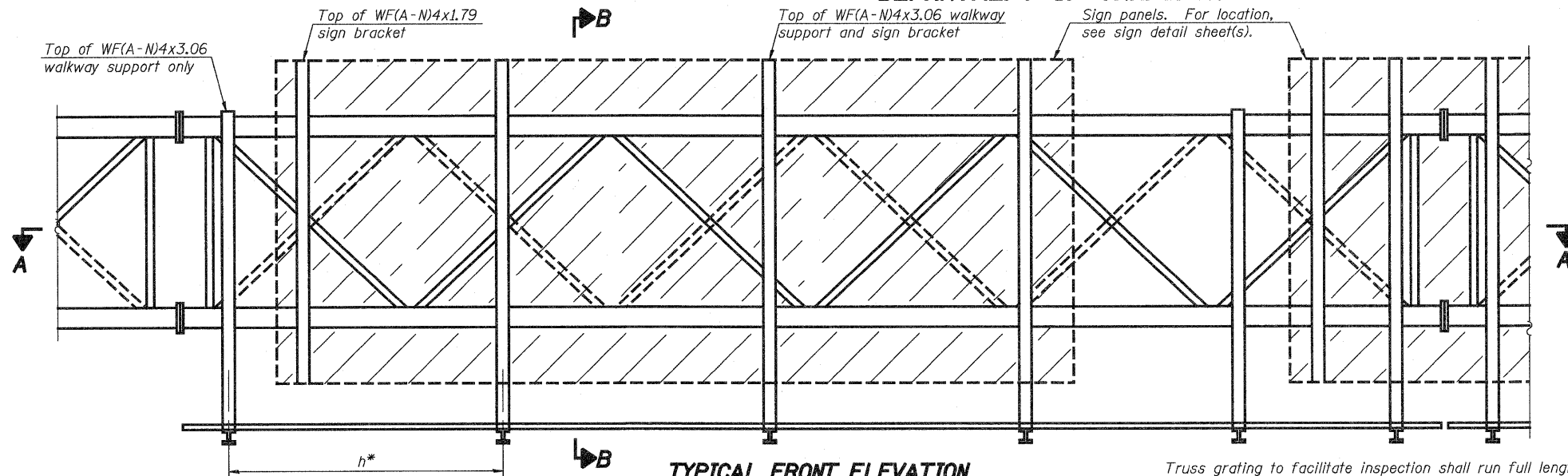


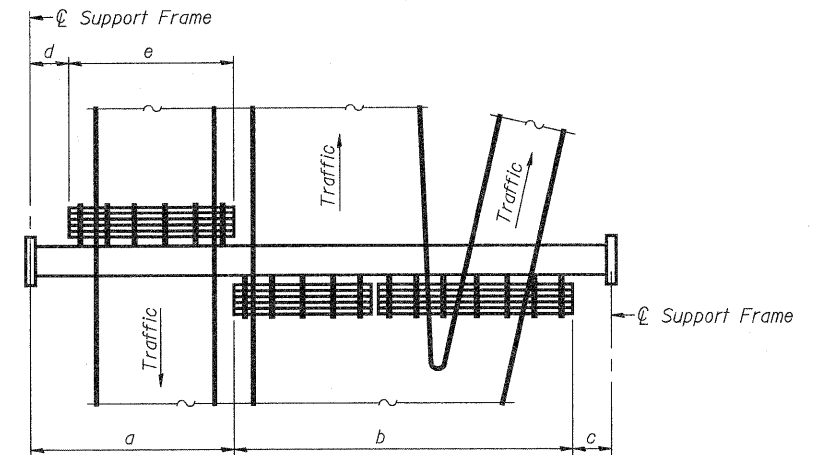
STATE OF ILLINOIS
DEPARTMENT OF TRANSPORTATION



TYPICAL FRONT ELEVATION

With lights and handrail omitted for clarity.
For Section B-B, see Base Sheet OS-A-10.

Truss grating to facilitate inspection shall run full length (center to center of support frames) ±12" on overhead trusses. Cost of truss grating is included in "Overhead Sign Structure".



PLAN WALKWAY AND HANDRAIL SKETCH
(Road plan beneath truss varies)

BRACKET TABLE

Sign Width		Number Brackets Required
Greater Than	Less Than or Equal To	
	8'-0"	2
8'-0"	14'-0"	3
14'-0"	20'-0"	4
20'-0"	26'-0"	5
26'-0"	32'-0"	6

Notes:

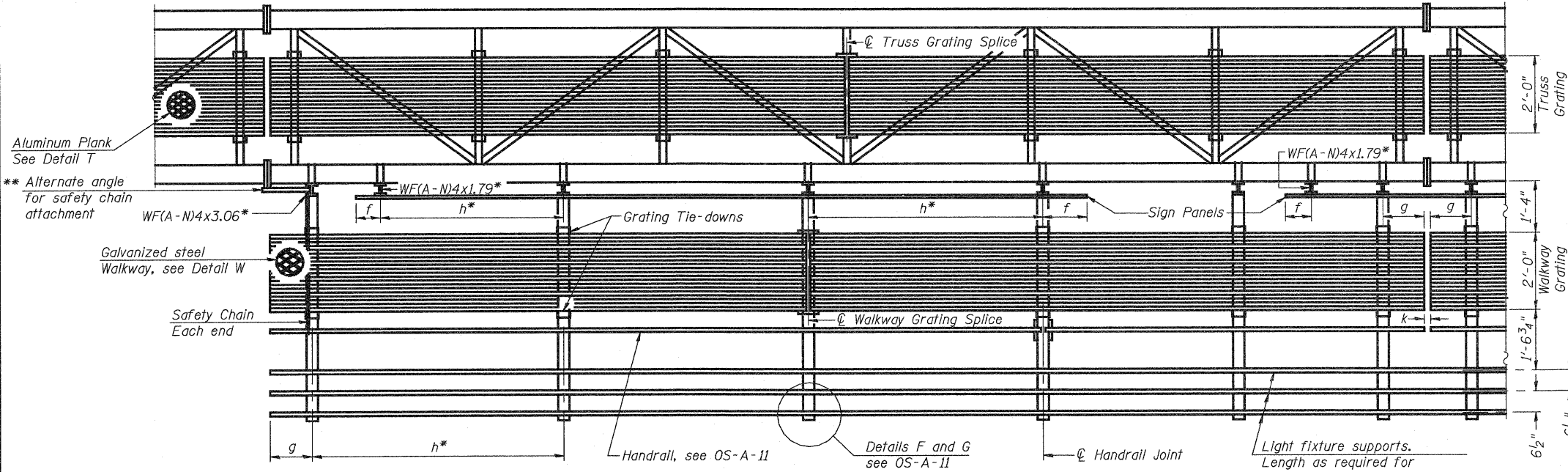
* Space walkway brackets WF(A-N)4x3.06 and sign brackets WF(A-N)4x1.79 for efficiency and within limits shown:

- f = 12" maximum, 4" minimum (End of sign to \varnothing of nearest bracket)
- g = 12" maximum, 4" minimum (End of walkway grating to \varnothing of nearest support bracket)
- h = 6'-0" maximum (\varnothing to \varnothing sign and/or walkway support brackets, WF(A-N)4x1.79 or WF(A-N)4x3.06)
- k = 2" maximum gap between adjacent walkway grating sections and handrail ends

** If walkway bracket at safety chain location is behind sign, add angle to bracket, see Alternate Safety Chain Attachment on Base Sheet OS-A-11.

For Details T and W, Section B-B and Grating Splice Details see Base Sheet OS-A-10.

For handrail details see base sheet OS-A-11.



SECTION A-A

Handrail and walkway shall span a minimum of three brackets between splices and/or gap joints. Place all sign and walkway brackets as close to panel points as practical. Handrail joints, grating, and light support splices placed as needed.

Note:

Details shown are considered equal alternatives to the Aluminum Walkway on Base Sheet OS-A-9, and may be substituted by Contractor at no change in contract cost.

Walkway and Truss Grating width dimensions are nominal and may vary ±1/2" based on available standard widths.

NUMBER	REVISION	DATE

DESIGNED -	ESW
CHECKED -	JWS
DRAWN -	PDB
CHECKED -	BRM

OS-A-9S

12-1-08

Structure Number	Station	a	b	c	d	e	Walkway Grating and Handrail Lengths
7S0251070R091.4	2008+85	14'-0"	32'-0"	14'-0"	-	-	32'-0"
7S0251070R091.8	2028+00	14'-0"	44'-0"	14'-0"	-	-	44'-0"
7S0251057L157.7	2063+00	14'-0"	54'-0"	14'-0"	-	-	54'-0"
7S0251057L158.0	2077+87	14'-0"	44'-0"	14'-0"	-	-	44'-0"

**OVERHEAD SIGN STRUCTURES
ALTERNATE WALKWAY DETAILS**

SHEET NO. 21	F.A.I. RTE.	SECTION	COUNTY	TOTAL SHEETS	SHEET NO.
	57/70	(25-3)R	EFFINGHAM	1416	373
SHEETS 33	CONTRACT NO. 74296				
FED. ROAD DIST. NO.		ILLINOIS FED. AID PROJECT			