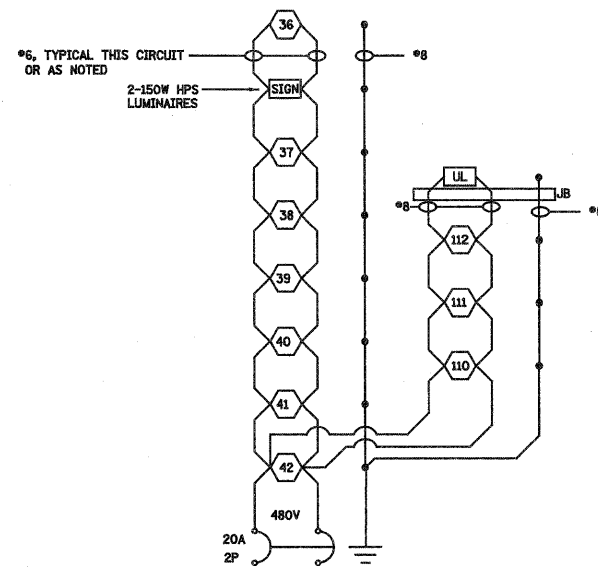
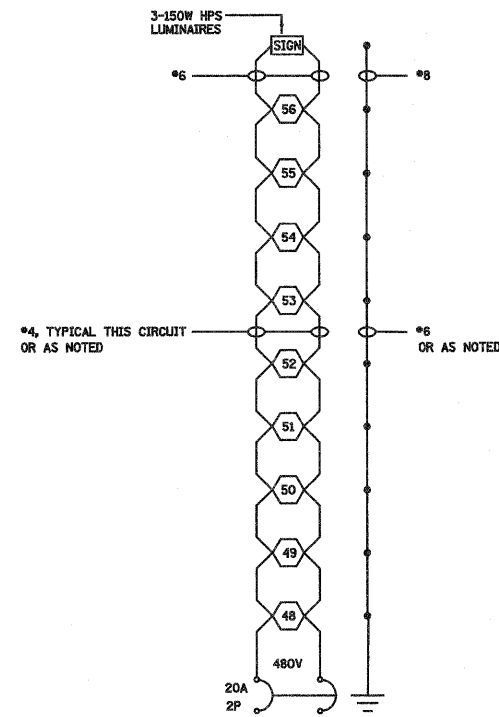


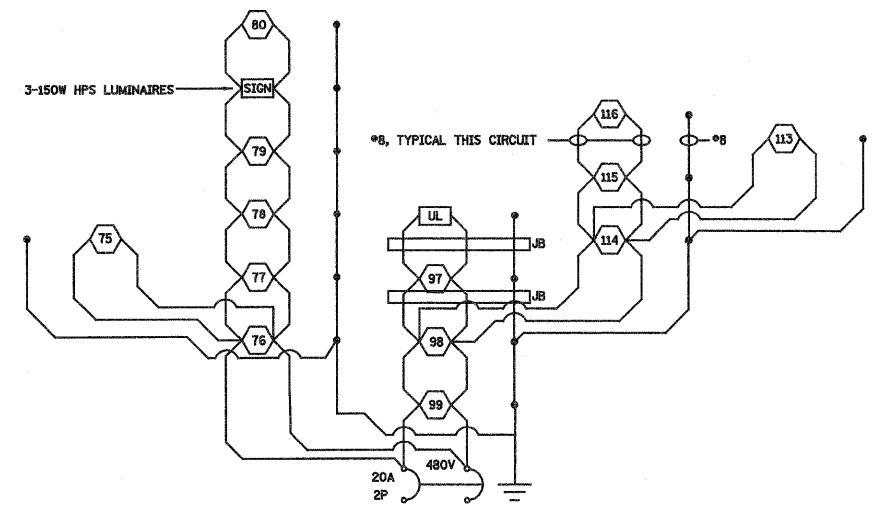
LIGHTING CKT 1
PROPOSED LIGHTING CONTROLLER NO. 1



LIGHTING CKT 2
PROPOSED LIGHTING CONTROLLER NO. 1







LIGHTING CKT 3
PROPOSED LIGHTING CONTROLLER NO. 1

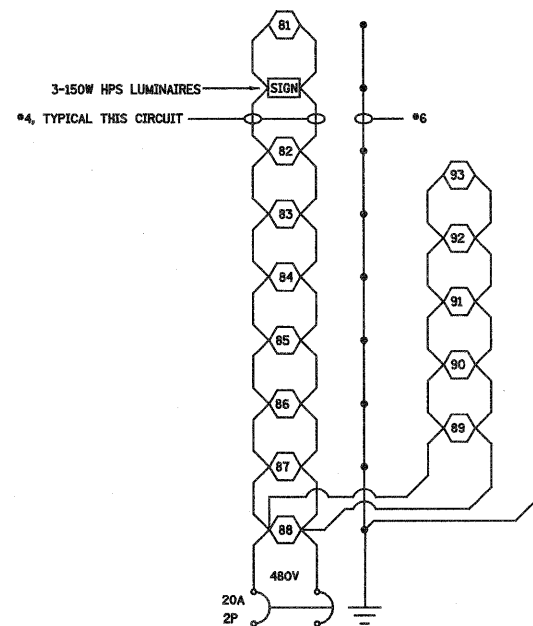


LIGHTING CKT 4
PROPOSED LIGHTING CONTROLLER NO. 1

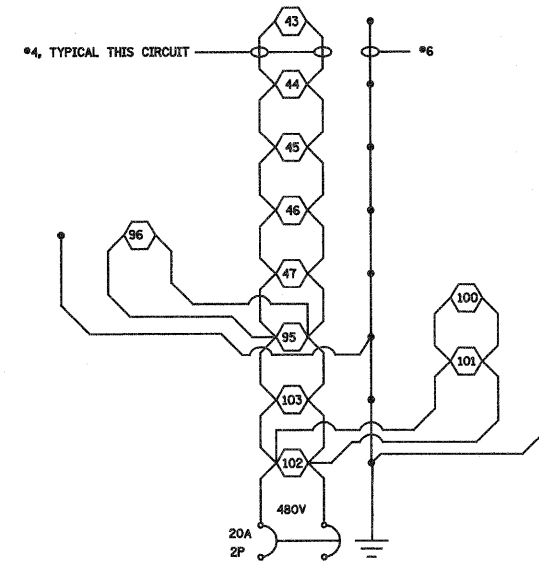
NOTES:

- ALL NECESSARY REVISIONS TO THE WIRING SHOWN ON THIS SHEET SHALL BE MADE AT NO ADDITIONAL COST TO THE DEPARTMENT AND TO THE SATISFACTION OF THE ENGINEER.

-  400W ROADWAY LUMINAIRE
-  SIGN LIGHTING LUMINAIRE
-  150W UNDERPASS LUMINAIRE
-  JUNCTION BOX



LIGHTING CKT 5
PROPOSED LIGHTING CONTROLLER NO. 1



LIGHTING CKT 6
PROPOSED LIGHTING CONTROLLER NO. 1

FILE NAME =	USER NAME = paul	DESIGNED -	REVISED - 04-08-10	STATE OF ILLINOIS DEPARTMENT OF TRANSPORTATION	WIRING DIAGRAM CONTROLLER NO.1 SOUTH TRI LEVEL	F.A.I RTE.	SECTION	COUNTY	TOTAL SHEETS	SHEET NO.
Sn\Projects\403-00072.51-70\ dgn\ S Trilv\lighting det\ design		DRAWN -	REVISED -			57/70	(25-3)-6	EFFINGHAM	1416	414
		CHECKED -	REVISED -			SCALE: SHEET NO. 25 OF 34 SHEETS STA. TO STA.		CONTRACT NO. 74293		
		DATE -	REVISED -			FED. ROAD DIST. NO. ILLINOIS FED. AID PROJECT				