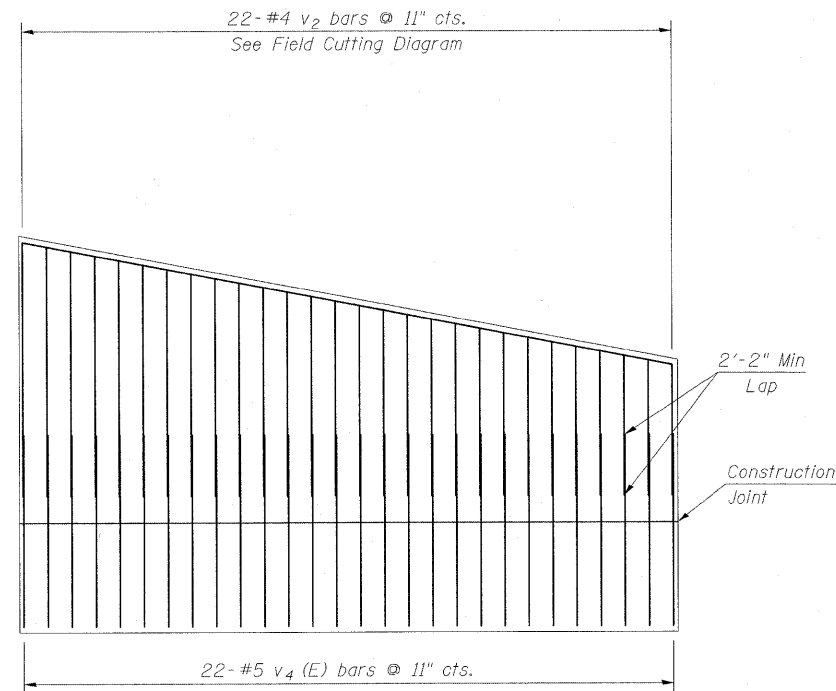
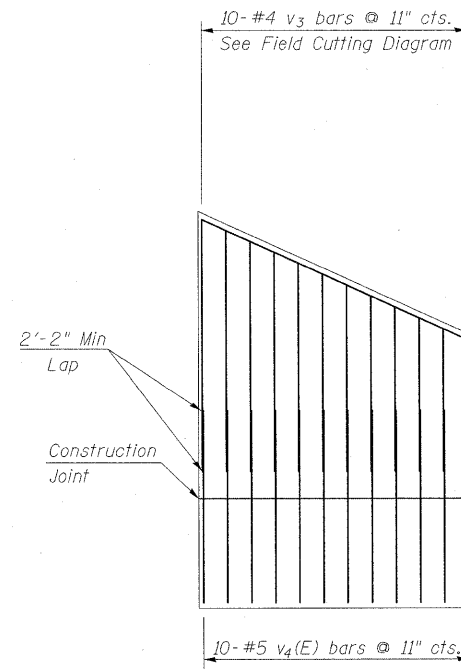


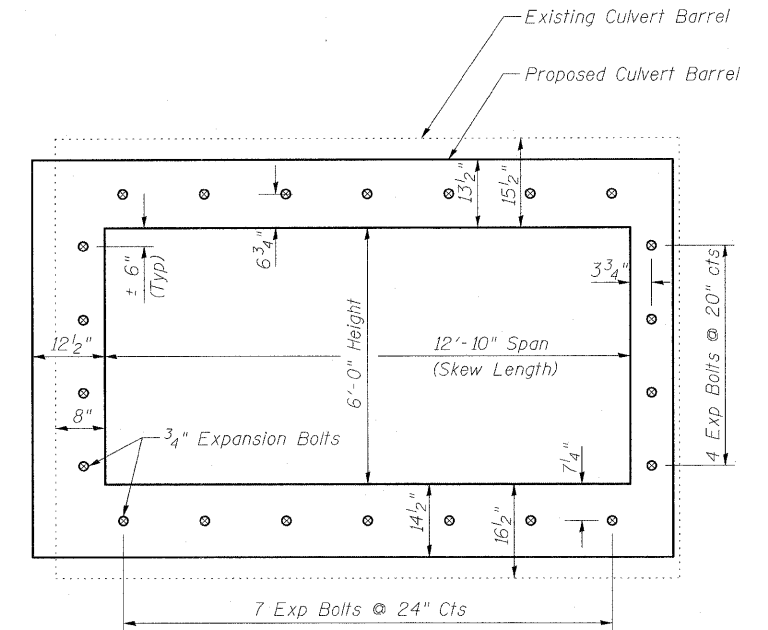
STATE OF ILLINOIS
DEPARTMENT OF TRANSPORTATION



**LONG WING
SHOWING REINFORCEMENT**

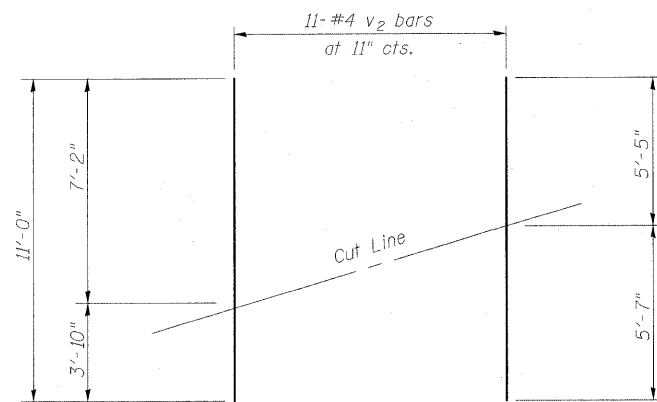


**SHORT WING
SHOWING REINFORCEMENT**

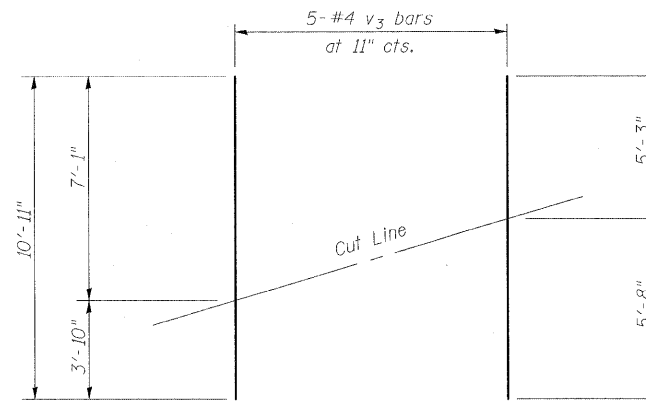


Note - Expansion Bolts shall be 3/4" hooked bolts. Hooked bolts shall extend a minimum of 9" into the new concrete

**EXPANSION BOLT LAYOUT
(at Face of Existing Culvert)**



**FIELD CUTTING DIAGRAM
(v₂ bars)**



**FIELD CUTTING DIAGRAM
(v₃ bars)**

DESIGNED -	BB
CHECKED -	CJF
DRAWN -	RCB
CHECKED -	CJF

Revised Sheet 5/21/10 CJF

Order v₂ & v₃ bars full length. Cut as shown. Use remainder of bar in opposite end of Wing Wall.



**BERNARDIN
LOCHMUELLER &
ASSOCIATES, INC.**

3 Oak Drive
Maryville, IL 62462-5685
Local (618) 328-4905
Fax 618-328-4995

**BOX CULVERT DETAILS
RT STA 2046+35.61
FAI ROUTE 70 WB (RDWY A)**

SHEET NO. 3 OF 3 SHEETS	F.A.I RTE.	SECTION	COUNTY	TOTAL SHEETS	SHEET NO.
	57/70	(25-3)R	EFFINGHAM	1416	447
FED. ROAD DIST. NO.			ILLINOIS	FED. AID PROJECT	
CONTRACT NO. 74296					