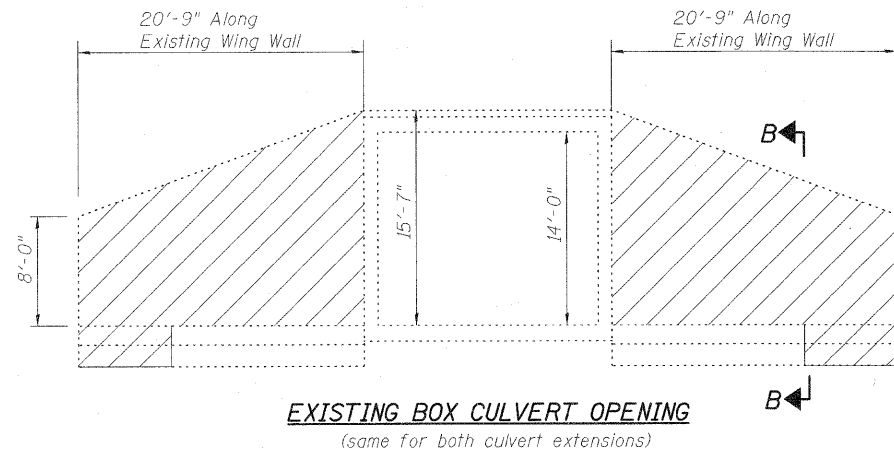
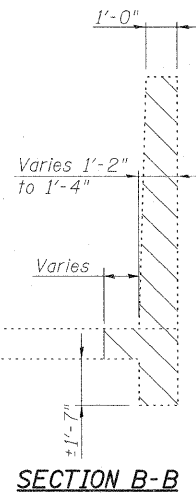


STATE OF ILLINOIS
DEPARTMENT OF TRANSPORTATION

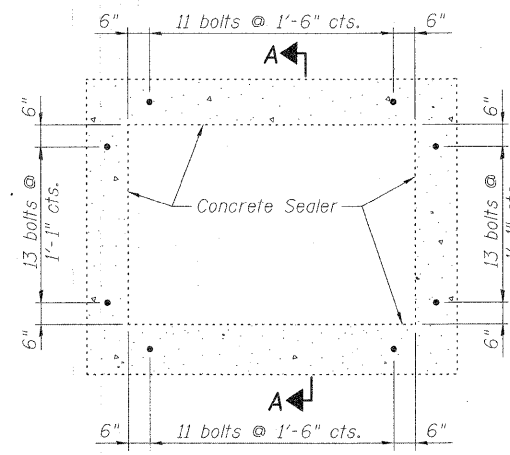


EXISTING BOX CULVERT OPENING
(same for both culvert extensions)

▨ Indicates Concrete Removal.
Existing wingwalls shall be removed to the top of footings. Removal of existing wingwall shall be paid for as Concrete Removal.

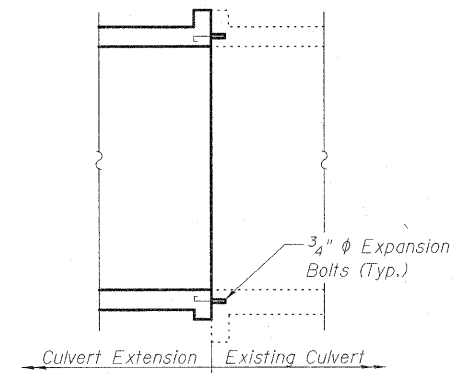


SECTION B-B

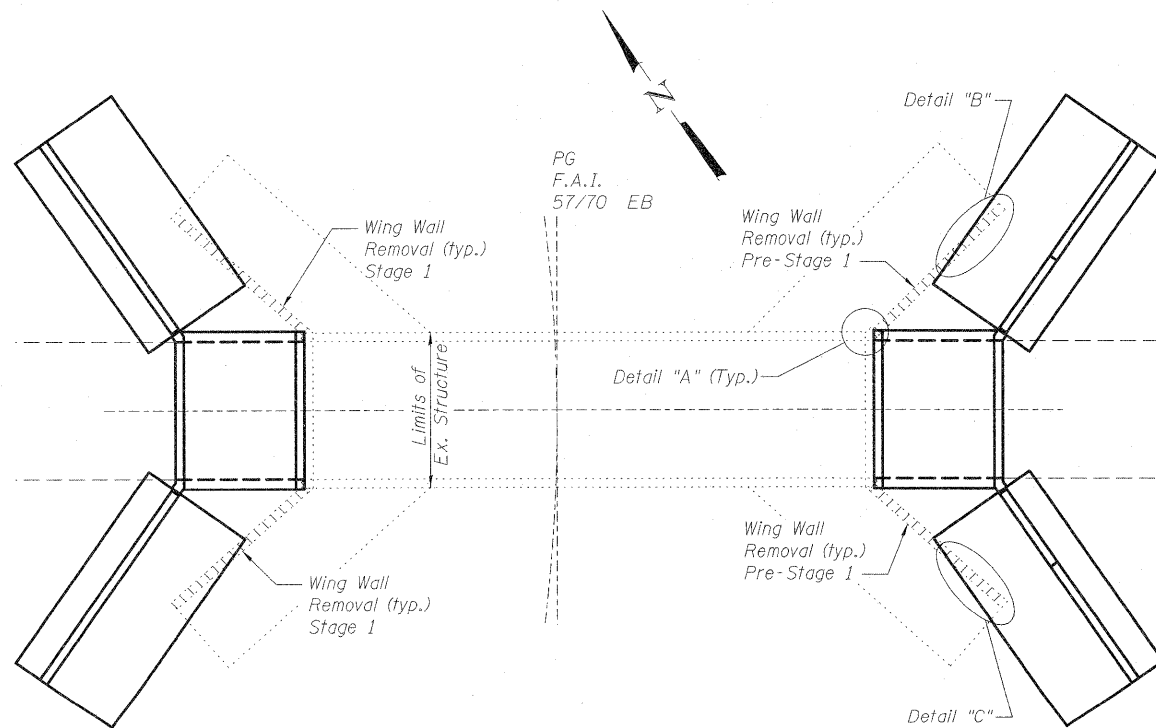


EXPANSION BOLT INSTALLATION FOR CULVERT EXTENSIONS

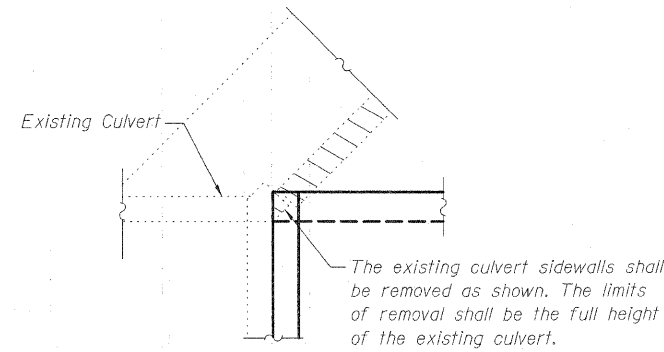
(Expansion bolts shall be $\frac{3}{4}$ " ϕ hooked bolts. The hooked bolts shall extend 9" into the new concrete)



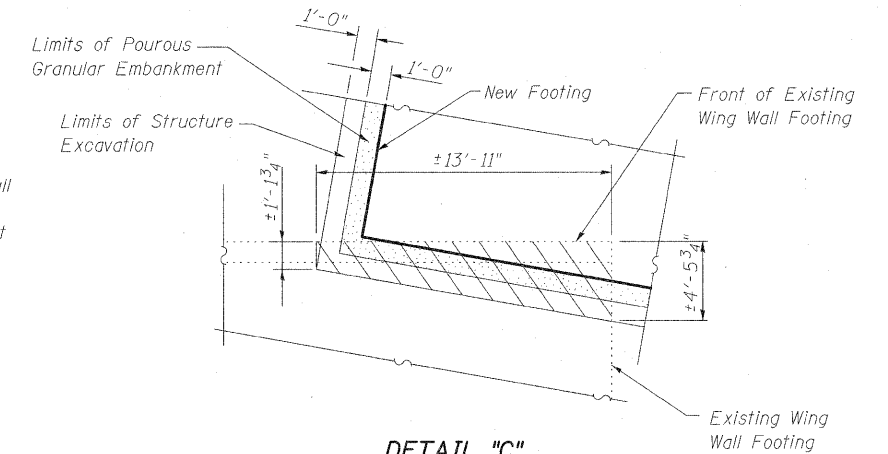
SECTION A-A OF EXPANSION BOLT DETAILS



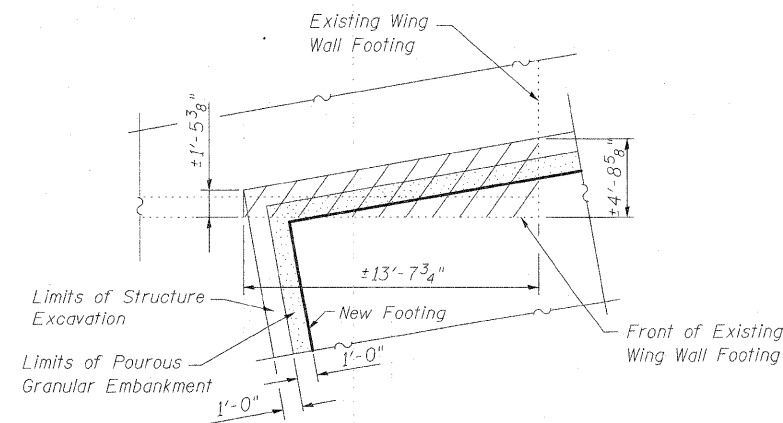
CULVERT REMOVAL PLAN



DETAIL "A"



DETAIL "C"
(Typ. South Wing Walls)



DETAIL "B"
(Typ. North Wing Walls)

BILL OF MATERIAL

ITEM	UNIT	TOTAL
Concrete Removal	Cu. Yd.	50.9
Expansion Bolts $\frac{3}{4}$ "	Each	96

DESIGNED	B.B.
CHECKED	C.J.F.
DRAWN	J.G.
CHECKED	C.J.F. & B.B.

**CONCRETE REMOVAL & EXPANSION BOLT DETAILS
STRUCTURE NO. 025-2018**

SHEET NO. 3 9 SHEETS	F.A.I. RTE. 70	SECTION (25-3)BY	COUNTY EFFINGHAM	TOTAL SHEETS 1416	SHEET NO. 469
	SN 025-2018		CONTRACT NO. 74296		
FED. ROAD DIST. NO. 7 ILLINOIS FED. AID PROJECT					



**BERNARDIN
LOCHMUELLER &
ASSOCIATES, INC.**

3 Oak Drive
Mareville, IL 62062-6635
Local (618) 288-4665
Fax 618-288-4666