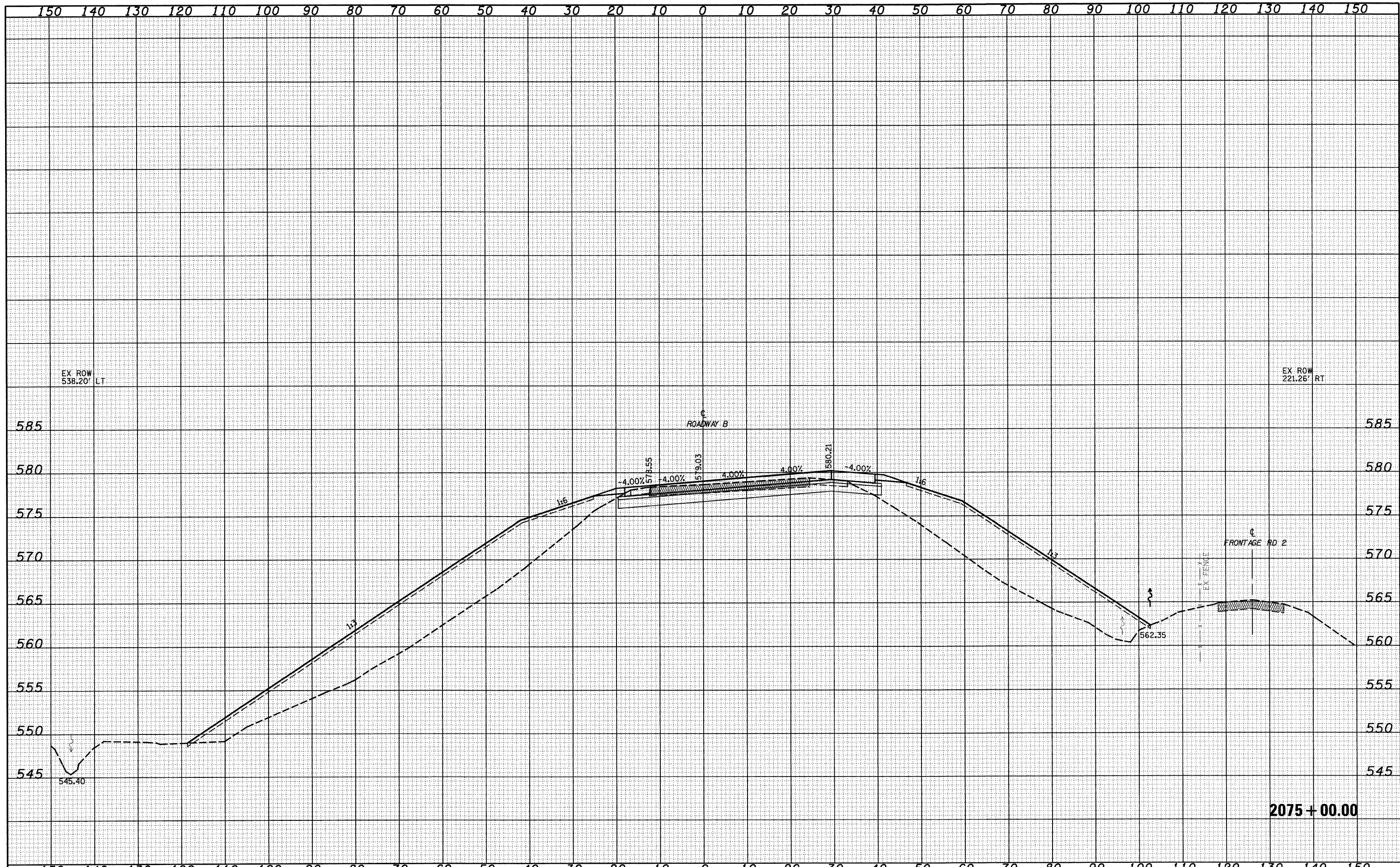


DATE	
BY	
SURVEYED	
PLOTTED	
TEMP. DATE	
NOTE BOOK	
AREAS CHECKED	
NO.	

DATE	
BY	
SURVEYED	
PLOTTED	
TEMP. DATE	
NOTE BOOK	
AREAS CHECKED	
NO.	



FILE NAME =	USER NAME = lmda	DESIGNED - JWS	REVISED -	<b>STATE OF ILLINOIS</b> <b>DEPARTMENT OF TRANSPORTATION</b>	<b>CROSS SECTIONS SOUTH TRI LEVEL - ROADWAY B</b>	F.A.I. RTE. 57/70	SECTION (25-3)R	COUNTY EFFINGHAM	TOTAL SHEETS 1416	SHEET NO. 583
SAProject\403-00072.57-70\dy15.Trk\view\J78000.dgn	PLOT SCALE = 20,0000 ' / IN.	DRAWN - LEC	REVISED -			SCALE: 1"=10'	SHEET NO. 89 OF 108 SHEETS	STA. 2075+00.00 TO STA. 2075+00.00	CONTRACT NO. 74296	
	PLOT DATE = 2/9/2010	CHECKED - BRM	REVISED -			FED. ROAD DIST. NO.		ILLINOIS FED. AID PROJECT		
		DATE - 2-25-08	REVISED -							