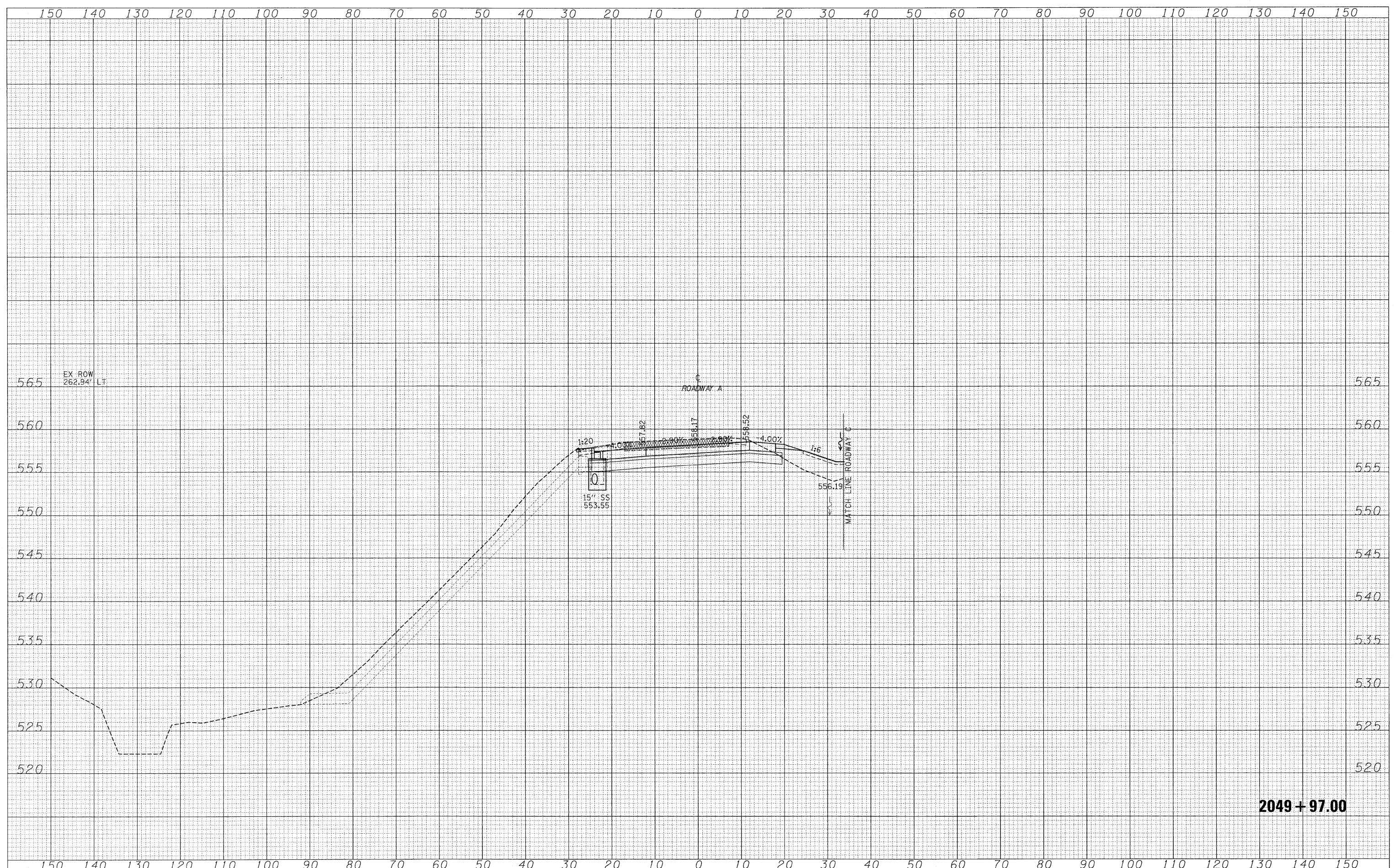


DATE	
BY	
SURVEYED	
PLOTTED	
TEMPLATE	
AREAS	
CHECKED	
FINAL SURVEY	
NOTE BOOK	
NO.	

DATE	
BY	
SURVEYED	
PLOTTED	
TEMPLATE	
AREAS	
CHECKED	
ORIGINAL SURVEY	
NOTE BOOK	
NO.	



**2049 + 97.00**

FILE NAME =	USER NAME = lunde	DESIGNED - JWS	REVISED -	<b>STATE OF ILLINOIS</b> <b>DEPARTMENT OF TRANSPORTATION</b>	<b>CROSS SECTIONS SOUTH TRI LEVEL - ROADWAY A</b>				F.A.I. RTE.	SECTION	COUNTY	TOTAL SHEETS	SHEET NO.
St\proj\403\00257\04p16\16\hask\178304.dwg		DRAWN - LEC	REVISED -		57/70	(25-3)R	EFFINGHAM	1416	671				
PLOT SCALE = 10.0000' / IN.		CHECKED - BRM	REVISED -		SCALE: 1"=10'   SHEET NO. 55 OF 125 SHEETS   STA. 2049+50.00 TO STA. 2049+50.00				FED. ROAD DIST. NO.	ILLINOIS	FED. AID PROJECT	CONTRACT NO. 74296	
PLOT DATE = 3/19/2010		DATE - 2-25-08	REVISED -										