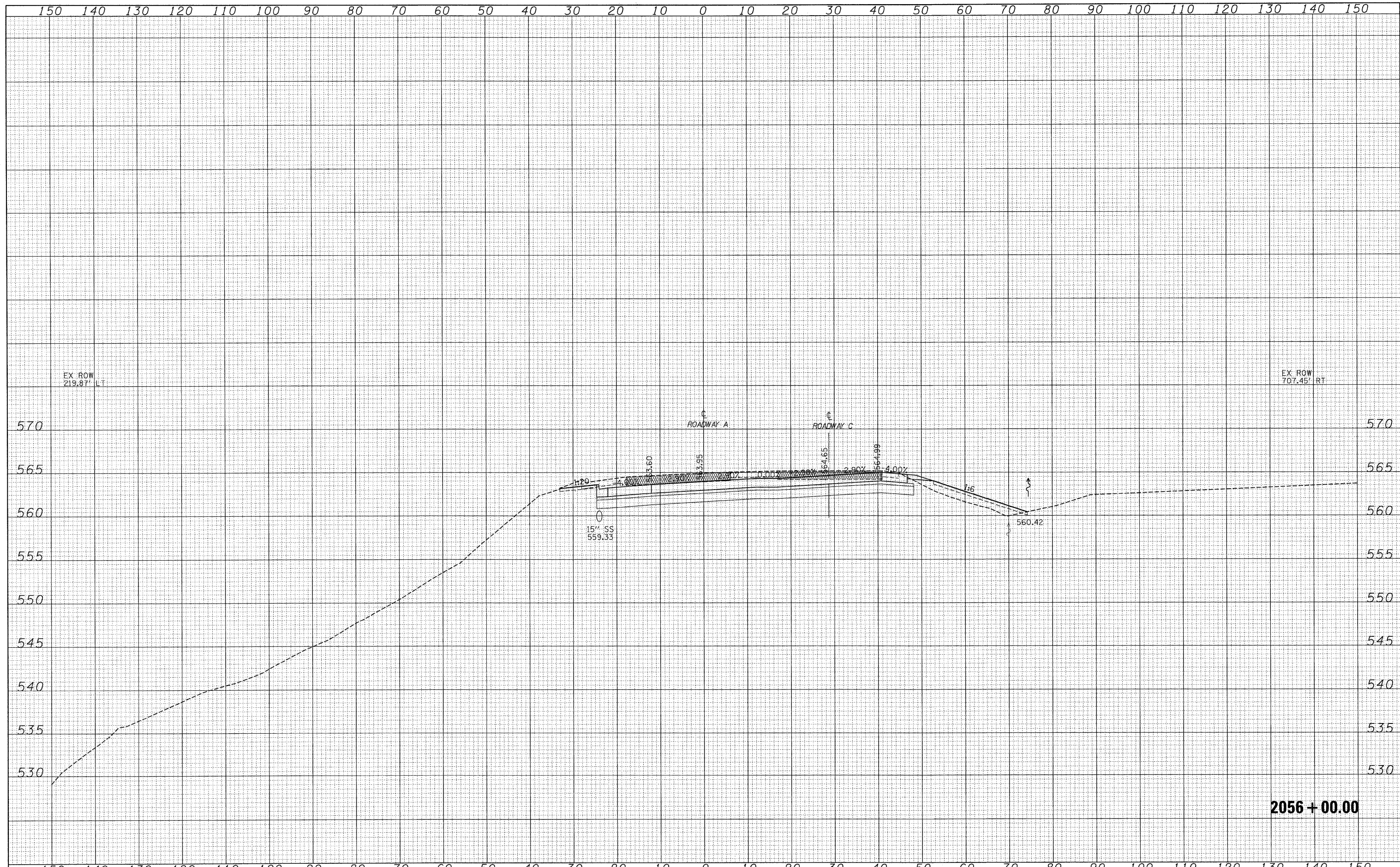


DATE	
BY	
FINAL SURVEY	SUBMITTED
NOTE BOOK	PLOTTED
NO.	TEMPLATE
	AREAS CHECKED

DATE	
BY	
ORIGINAL SURVEY	SUBMITTED
NOTE BOOK	PLOTTED
NO.	TEMPLATE
	AREAS CHECKED



2056 + 00.00

FILE NAME =	USER NAME = Irinda	DESIGNED - JWS	REVISED -	STATE OF ILLINOIS DEPARTMENT OF TRANSPORTATION	CROSS SECTIONS SOUTH TRI LEVEL - ROADWAY A			F.A.I. RTE. 57/70	SECTION (25-3)R	COUNTY EFFINGHAM	TOTAL SHEETS 1416	SHEET NO. 686
S:\Projects\483-000\257-70\Drawings\DR0001.dwg		DRAWN - LEC	REVISED -		SCALE: 1"=10'	SHEET NO. 70 OF 125 SHEETS	STA. 2056+00.00 TO STA. 2056+00.00	FED. ROAD DIST. NO.	ILLINOIS	FED. AID PROJECT	CONTRACT NO. 74296	
		CHECKED - BRM	REVISED -									
		DATE - 2-25-08	REVISED -									