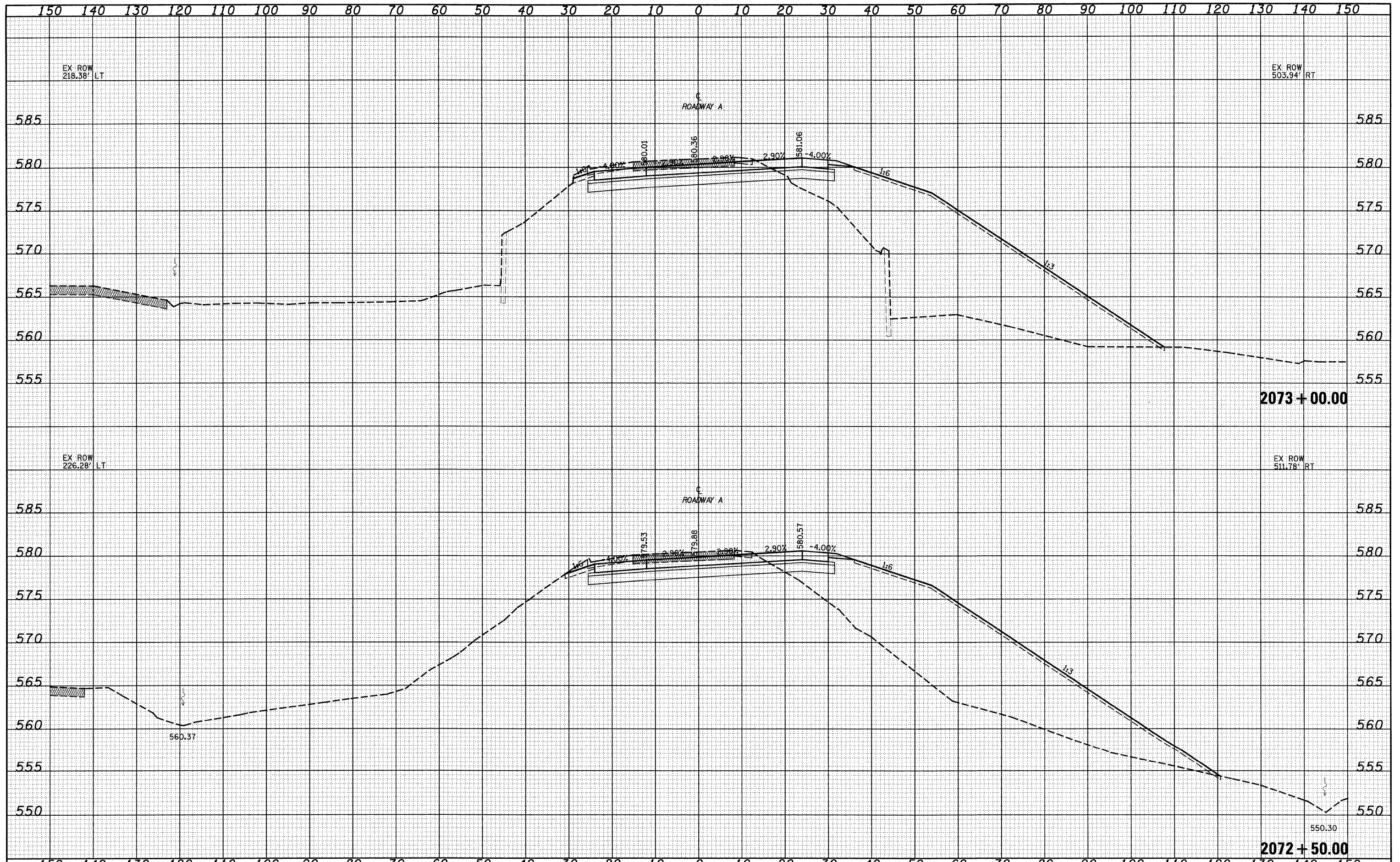


DATE	
BY	
FINAL SURVEY	
REVISION	
TEMPLATE	
NO. BOOK	
NO.	
AREAS CHECKED	

DATE	
BY	
ORIGINAL SURVEY	
REVISION	
TEMPLATE	
NO. BOOK	
NO.	
AREAS CHECKED	



FILE NAME -	USER NAME - lrrda	DESIGNED - JWS	REVISED -	STATE OF ILLINOIS DEPARTMENT OF TRANSPORTATION	CROSS SECTIONS SOUTH TRI LEVEL - ROADWAY A		F.A.I. RTE. 57/70	SECTION (25-3)R	COUNTY EFFINGHAM	TOTAL SHEETS 1416	SHEET NO. 725	
PROJECT NO. 007-57-70(1)S Final.dwg	PLOT SCALE = 20,00000' / IN.	DRAWN - LEC	REVISED -		SCALE: 1"=10'	SHEET NO. 109 OF 125 SHEETS	STA. 2072+50.00 TO STA. 2072+50.00	CONTRACT NO. 74296		ILLINOIS FED. AID PROJECT		
	PLOT DATE = 2/9/2010	CHECKED - BRM	REVISED -									
		DATE - 2-25-08	REVISED -									