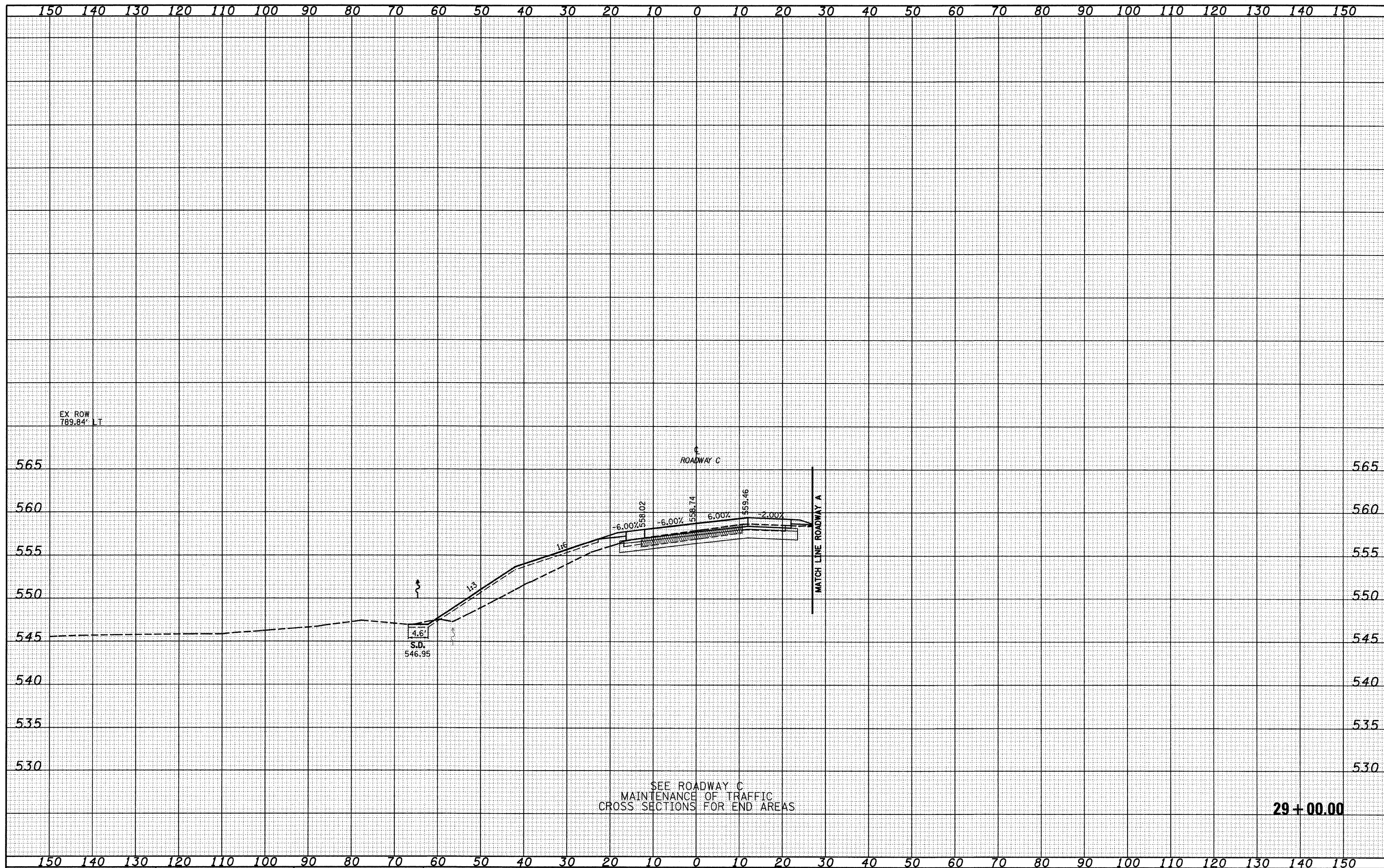


DATE	
BY	
SURVEYED	
TEMPLATE	
NOTE BOOK	
AREAS CHECKED	

DATE	
BY	
SURVEYED	
TEMPLATE	
NOTE BOOK	
AREAS CHECKED	



FILE NAME =	USER NAME = Linda	DESIGNED - JWS	REVISED -	<b>STATE OF ILLINOIS</b> <b>DEPARTMENT OF TRANSPORTATION</b>	<b>CROSS SECTIONS SOUTH TRI LEVEL - ROADWAY C</b>				F.A.T. RTE. 57/70	SECTION (25-3)R	COUNTY EFFINGHAM	TOTAL SHEETS 1416	SHEET NO. 742
PLOT SCALE = 20.0000' / IN.		DRAWN - LEC	REVISED -		SCALE: 1"=10'	SHEET NO. 1 OF 13 SHEETS	STA. 29+00.00 TO STA. 29+00.00	FED. ROAD DIST. NO. ILLINOIS FED. AID PROJECT		CONTRACT NO. 74296			
PLOT DATE = 2/9/2010		CHECKED - BRM	REVISED -										
		DATE - 2-25-08	REVISED -										