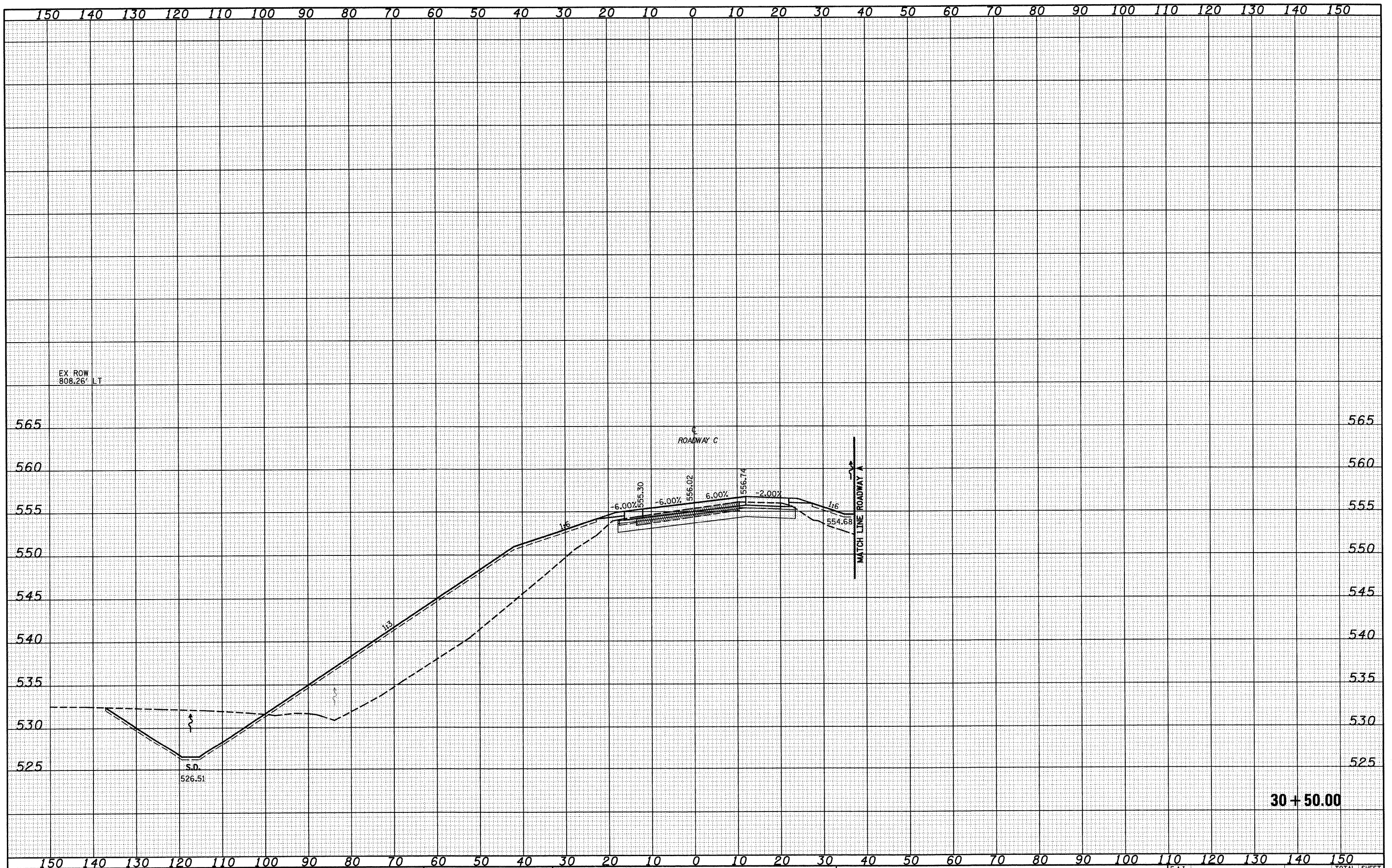


DATE	
BY	
SURVEYED	
NOTE BOOK	
NO.	
AREAS CHECKED	

DATE	
BY	
SURVEYED	
NOTE BOOK	
NO.	
AREAS CHECKED	



30 + 50.00

FILE NAME = S:\Projects\083\0807237\0807237.dwg
 USER NAME = Linda

DESIGNED - JWS
 DRAWN - LEC
 CHECKED - BRM
 DATE - 2-25-08

REVISIONS
 REVISIONS
 REVISIONS

STATE OF ILLINOIS
 DEPARTMENT OF TRANSPORTATION

CROSS SECTIONS SOUTH TRI LEVEL - ROADWAY C
 SCALE: 1"=10'
 SHEET NO. 4 OF 13 SHEETS
 STA. 30+50.00 TO STA. 30+50.00

F.A.I. RTE. 57/70
 SECTION (25-3R)
 COUNTY EFFINGHAM
 TOTAL SHEETS 1416
 SHEET NO. 745
 CONTRACT NO. 74296
 ILLINOIS FED. AID PROJECT