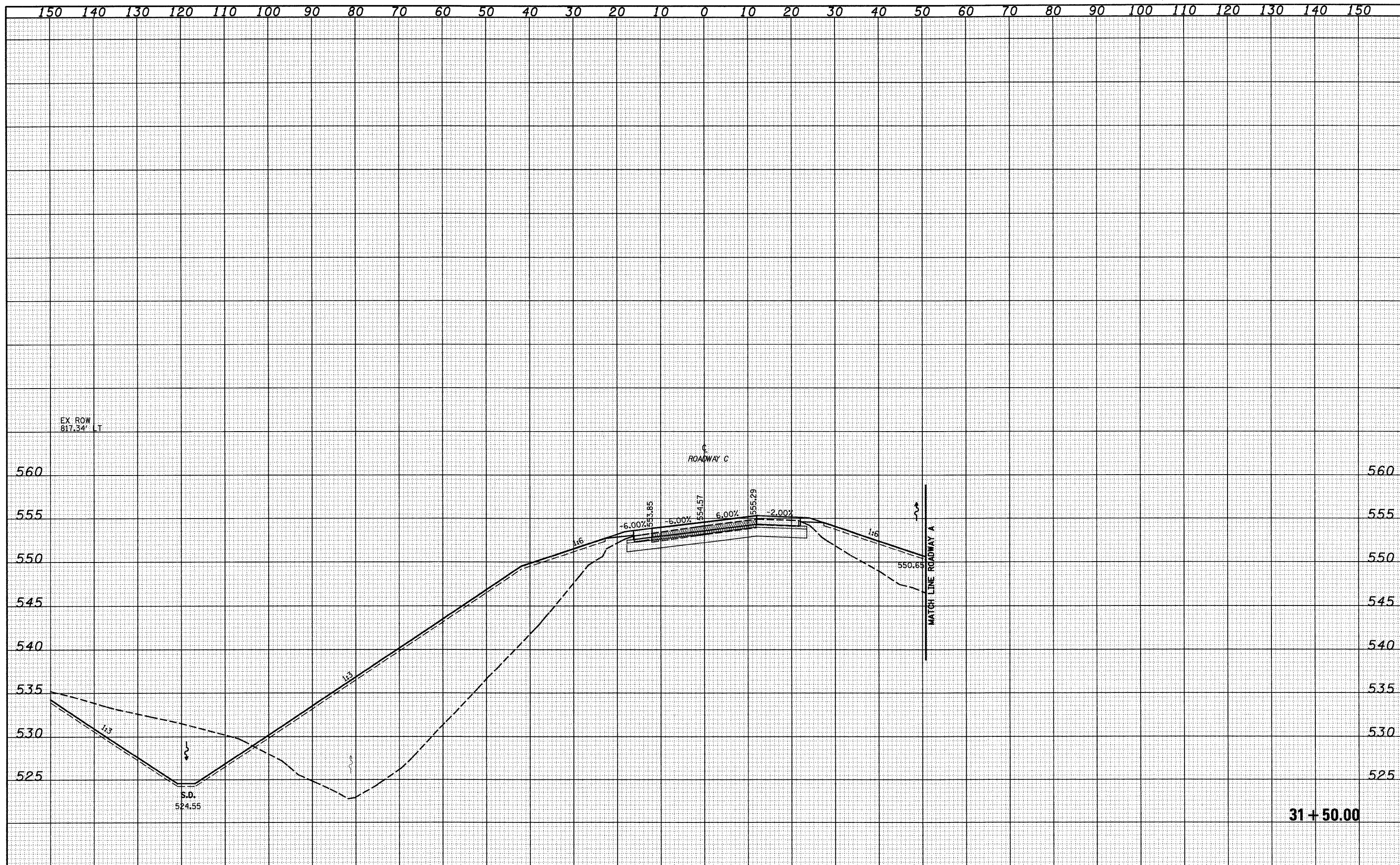


DATE	
BY	
SURVEYED	
PLANNED	
TEMPLATE	
AREAS CHECKED	
NO.	

DATE	
BY	
SURVEYED	
PLANNED	
TEMPLATE	
AREAS CHECKED	
NO.	



FILE NAME =	USER NAME = linda	DESIGNED - JWS	REVISED -	STATE OF ILLINOIS DEPARTMENT OF TRANSPORTATION	CROSS SECTIONS SOUTH TRI LEVEL - ROADWAY C		F.A.I. RTE. 57/70	SECTION (25-3)R	COUNTY EFFINGHAM	TOTAL SHEETS 1416	SHEET NO. 747
PROJECT: 103-0007-51-70.dwg	PLLOT SCALE = 20.0000' / IN.	DRAWN - LEC	REVISED -		SCALE: 1"=10'	SHEET NO. 6 OF 13 SHEETS	STA. 31+50.00 TO STA. 31+50.00	CONTRACT NO. 74296		ILLINOIS FED. AID PROJECT	
	PLLOT DATE = 2/9/2010	CHECKED - BRM	REVISED -								
		DATE - 2-25-08	REVISED -								