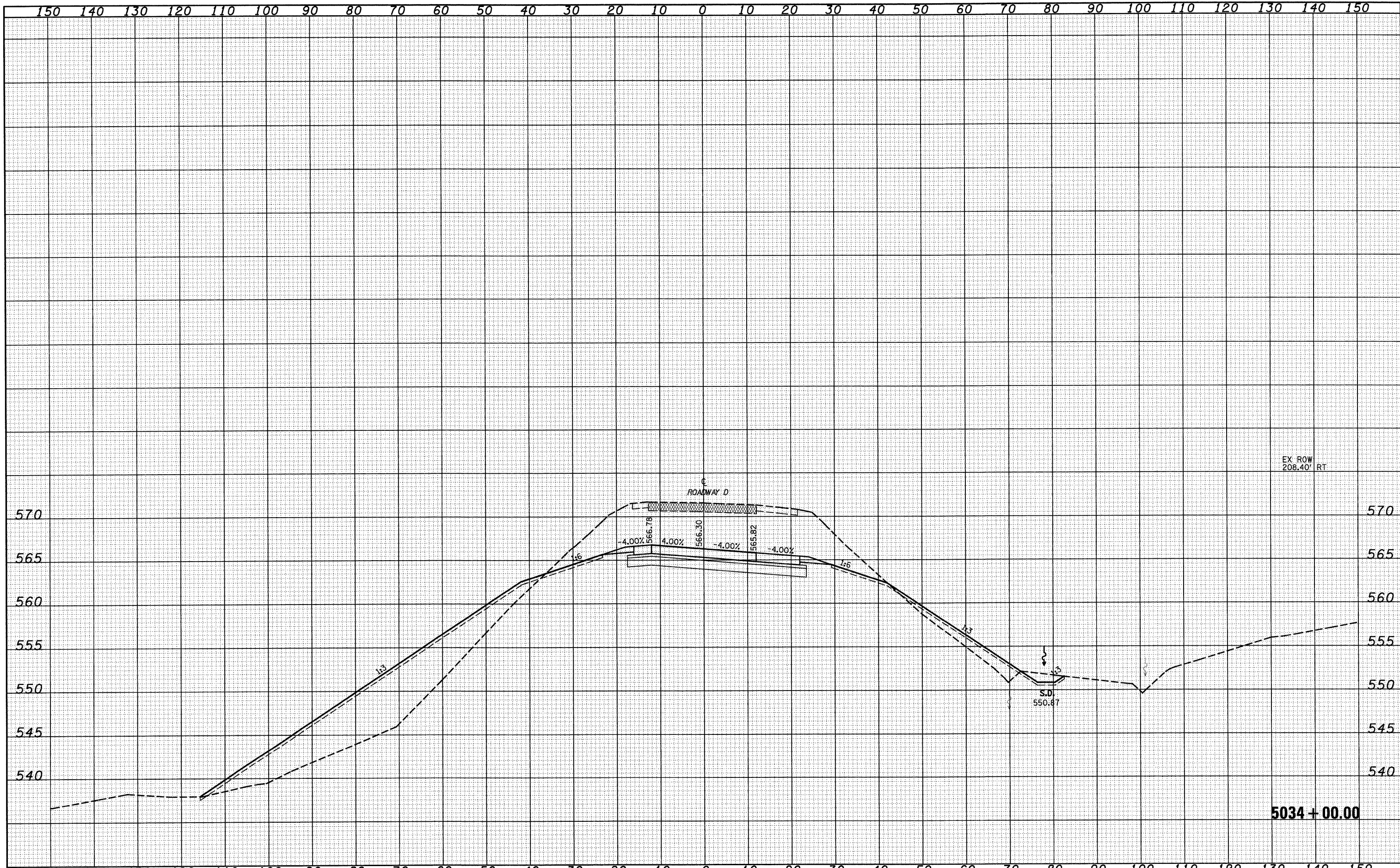


DATE	
BY	
FINAL SURVEY	
PLANNED	
NOTE BOOK	
NO.	
TEMPLE	
AREAS CHECKED	

DATE	
BY	
ORIGINAL SURVEY	
PLANNED	
NOTE BOOK	
NO.	
TEMPLE	
AREAS CHECKED	



FILE NAME =	USER NAME = Linda	DESIGNED - JWS	REVISED -	STATE OF ILLINOIS DEPARTMENT OF TRANSPORTATION	CROSS SECTIONS SOUTH TRI LEVEL - ROADWAY D			F.A.I. RTE.	SECTION	COUNTY	TOTAL SHEETS	SHEET NO.
5:\Projects\100\1007\57-70.dwg\15 1st\Asst.LJF900.dwg		DRAWN - LEC	REVISED -		SCALE: 1"=10'	SHEET NO. 9 OF 17 SHEETS	STA. 5034+00.00 TO STA. 5034+00.00	57/70	(25-3)R	EFFINGHAM	1416	763
		CHECKED - BRM	REVISED -					CONTRACT NO. 74296				
		DATE - 2-25-08	REVISED -					ILLINOIS FED. AID PROJECT				