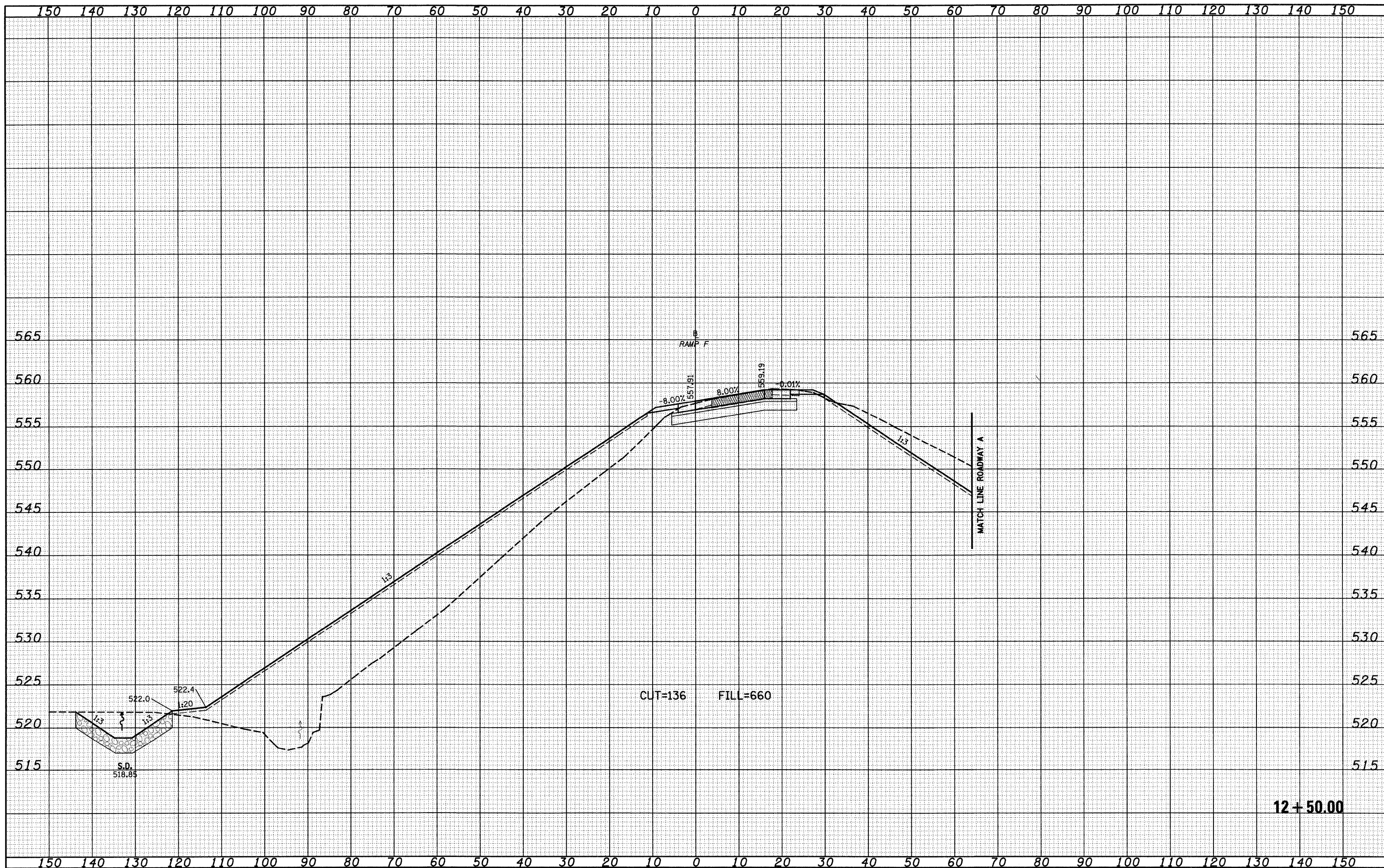


FINAL SURVEY	DATE
SURVEYED	BY
NOTE BOOK	
TEMPLATE	
AREAS CHECKED	
NO.	

ORIGINAL SURVEY	DATE
SURVEYED	BY
NOTE BOOK	
TEMPLATE	
AREAS CHECKED	
NO.	



FILE NAME =	USER NAME = lnda	DESIGNED - JWS	REVISED -	<b>STATE OF ILLINOIS</b> <b>DEPARTMENT OF TRANSPORTATION</b>	<b>CROSS SECTIONS SOUTH TRI LEVEL - RAMP F</b>			F.A.T. RTE. 57/70	SECTION (25-3R)	COUNTY EFFINGHAM	TOTAL SHEETS 1416	SHEET NO. 778
		DRAWN - LEC	REVISED -		SCALE: 1"=10'	SHEET NO. 7 OF 12 SHEETS	STA. 12+50.00 TO STA. 12+50.00	CONTRACT NO. 74296				
		CHECKED - BRM	REVISED -		FED. ROAD DIST. NO. ILLINOIS FED. AID PROJECT							
		DATE - 2-25-08	REVISED -									