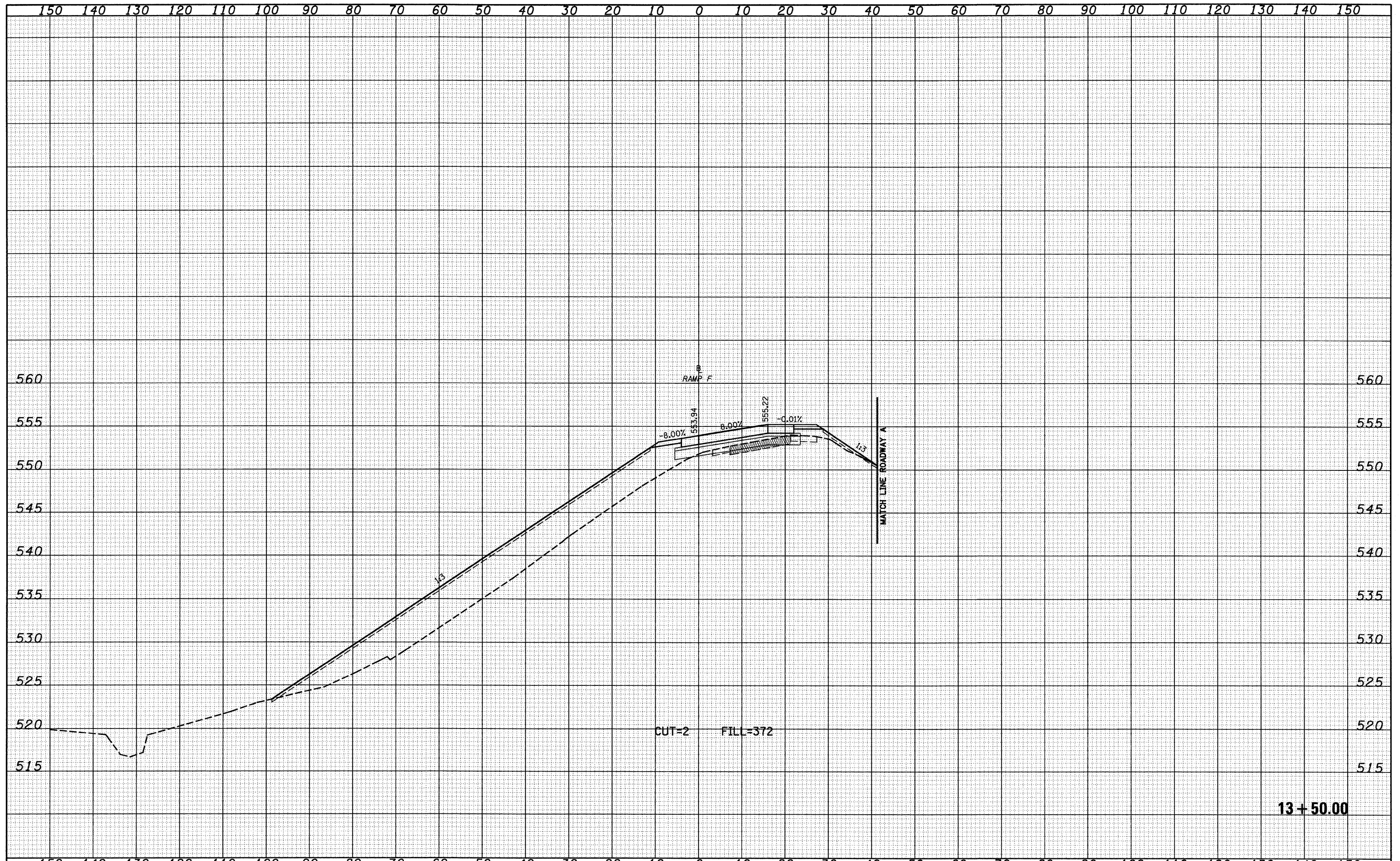


FINAL SURVEY	DATE
SURVEYED	BY
LOTTED	
TEMPLATE	
NOTE BOOK	
NO.	
AREAS CHECKED	

ORIGINAL SURVEY	DATE
SURVEYED	BY
LOTTED	
TEMPLATE	
NOTE BOOK	
NO.	
AREAS CHECKED	



13 + 50.00

FILE NAME =	USER NAME = Linda	DESIGNED - JWS	REVISED -	<b>STATE OF ILLINOIS</b> <b>DEPARTMENT OF TRANSPORTATION</b>	<b>CROSS SECTIONS SOUTH TRI LEVEL - RAMP F</b>	F.A.I. RTE.	SECTION	COUNTY	TOTAL SHEETS	SHEET NO.	
S:\projects\13000\13000\13000\13000.dgn		DRAWN - LEC	REVISED -			57/70	(25-3)R	EFFINGHAM	1416	780	
PLOT SCALE = 20.0000' / IN.		CHECKED - BRM	REVISED -			CONTRACT NO. 74296					
PLOT DATE = 2/9/2010		DATE - 2-25-08	REVISED -			ILLINOIS FED. AID PROJECT					
		SCALE: 1"=10'			SHEET NO. 9 OF 12 SHEETS		STA. 13+50.00 TO STA. 13+50.00		FED. ROAD DIST. NO.		