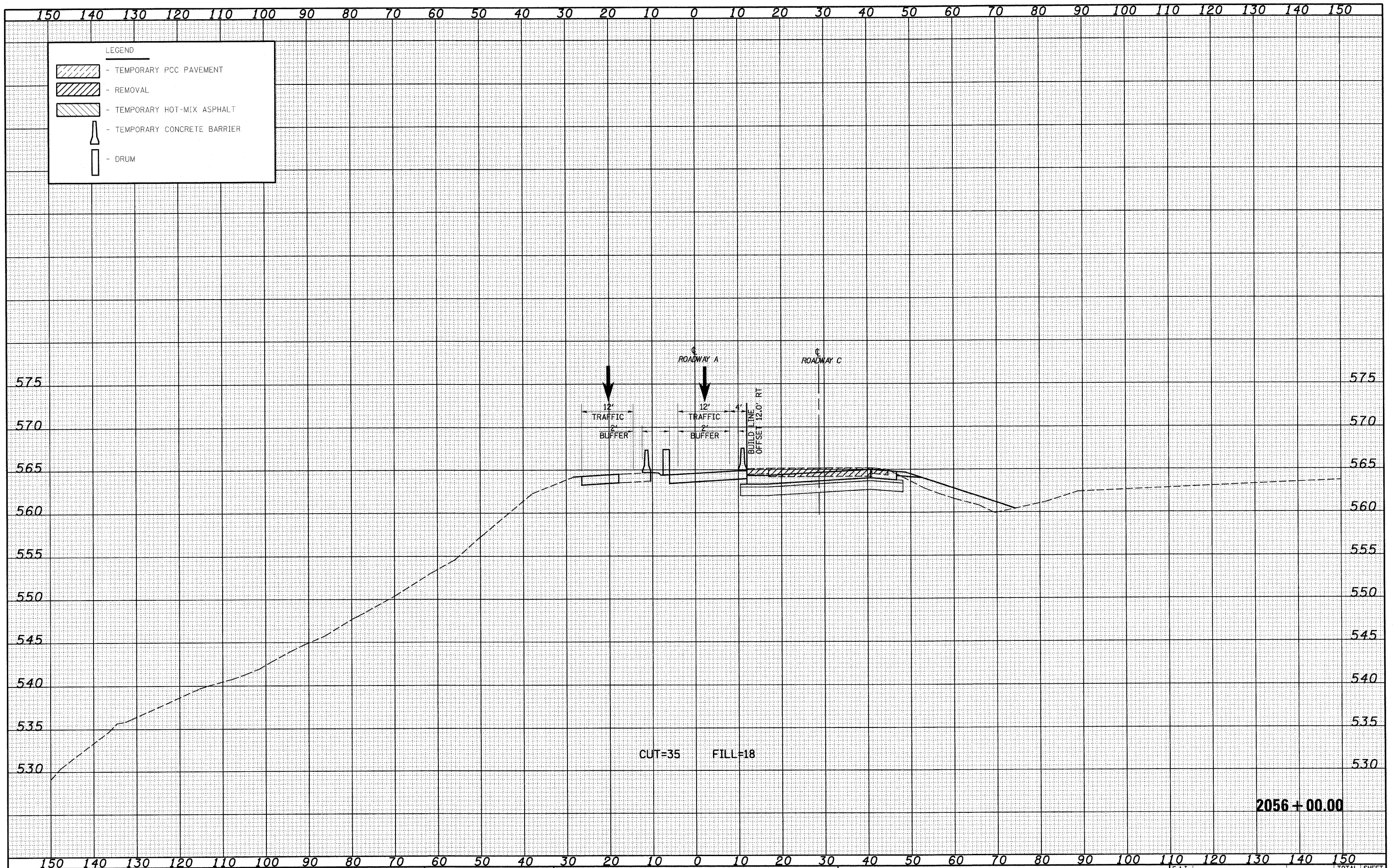


|               |  |
|---------------|--|
| DATE          |  |
| BY            |  |
| FINAL SURVEY  |  |
| SURVEYED      |  |
| NOTE BOOK     |  |
| TEMPLATE      |  |
| AREAS CHECKED |  |
| NO.           |  |

|                 |  |
|-----------------|--|
| DATE            |  |
| BY              |  |
| ORIGINAL SURVEY |  |
| SURVEYED        |  |
| NOTE BOOK       |  |
| TEMPLATE        |  |
| AREAS CHECKED   |  |
| NO.             |  |



**LEGEND**

- TEMPORARY PCC PAVEMENT
- REMOVAL
- TEMPORARY HOT-MIX ASPHALT
- TEMPORARY CONCRETE BARRIER
- DRUM

|                             |                   |                |           |   |   |   |                                    |                 |                   |                |  |
|-----------------------------|-------------------|----------------|-----------|---|---|---|------------------------------------|-----------------|-------------------|----------------|--|
| FILE NAME =                 | USER NAME = linds | DESIGNED - JWS | REVISED - | <b>STATE OF ILLINOIS<br/>DEPARTMENT OF TRANSPORTATION</b> | MAINTENANCE OF TRAFFIC SOUTH TRI LEVEL - ROADWAY A (STAGE 1B) | F.A.I. RTE. 57/70                             | SECTION (25-3)R                    | COUNTY EFINGHAM | TOTAL SHEETS 1416 | SHEET NO. 1165 |  |
| PLOT SCALE = 20.0000' / IN. |                   |                |           |   | CONTRACT NO. 74296  | FED. ROAD DIST. NO. ILLINOIS FED. AID PROJECT |                                    |                 |                   |                |  |
| PLOT DATE = 2/11/2010       |                   |                |           |   | SCALE: 1"=10'   | SHEET NO. 3 OF 10 SHEETS                      | STA. 2056+00.00 TO STA. 2056+00.00 |                 |                   |                |  |
|                             |                   |                |           |   |   |   |                                    |                 |                   |                |  |