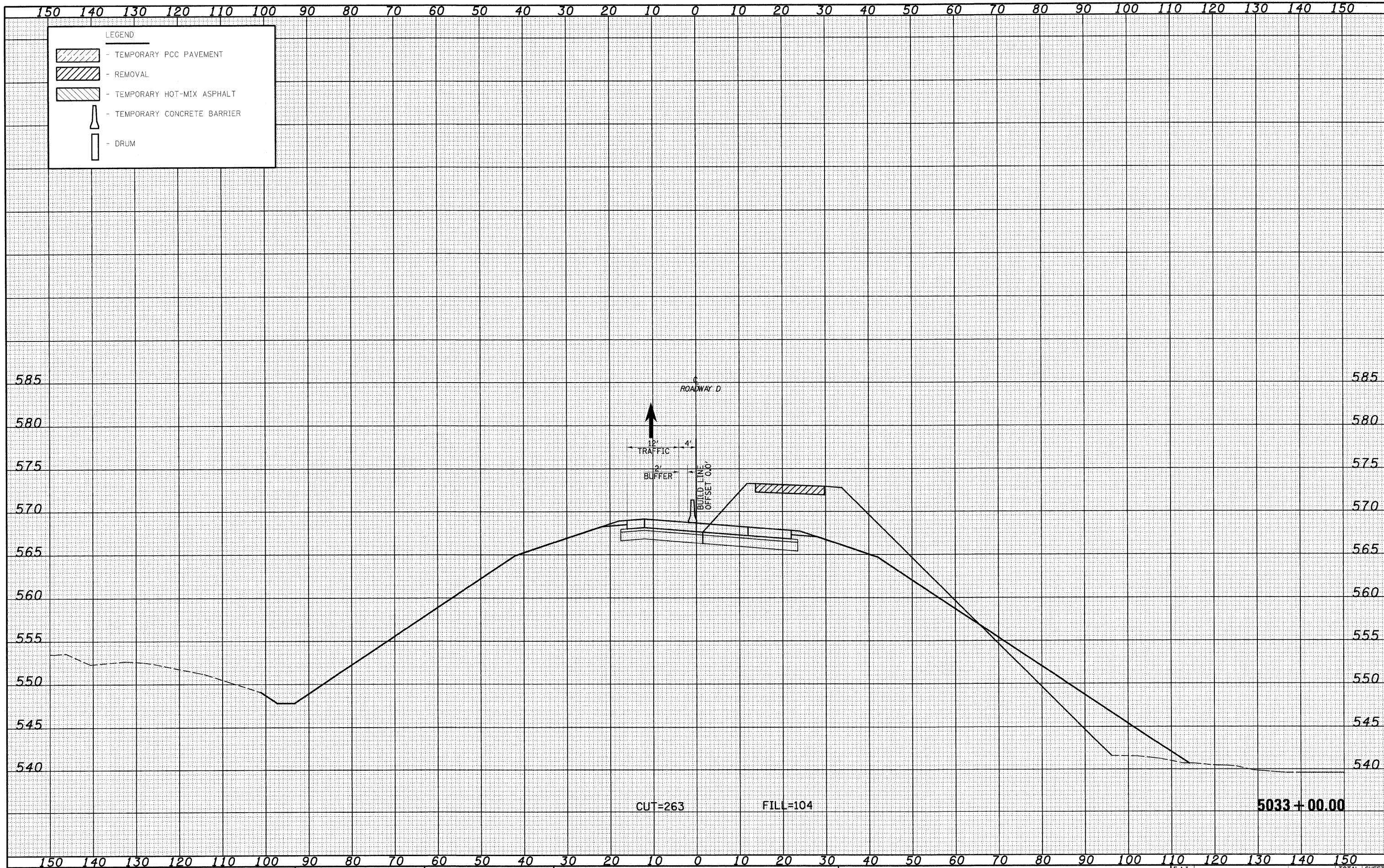


FINAL SURVEY SURVEYED BY DATE
 NOTE BOOK NO. SURVEYED BY DATE
 TEMPLATE AREAS CHECKED

ORIGINAL SURVEY SURVEYED BY DATE
 NOTE BOOK NO. SURVEYED BY DATE
 TEMPLATE AREAS CHECKED



LEGEND

- TEMPORARY PCC PAVEMENT
- REMOVAL
- TEMPORARY HOT-MIX ASPHALT
- TEMPORARY CONCRETE BARRIER
- DRUM

FILE NAME =
 S:\Projects\103-8007.31-70.dwg\103-8007.31-70.dwg

USER NAME = Linda
 PLOT SCALE = 20.00/00 ' / IN.
 PLOT DATE = 2/10/2010

DESIGNED - JWS
 DRAWN - LEC
 CHECKED - BRM
 DATE - 2-25-08

REVISED -
 REVISED -
 REVISED -
 REVISED -

**STATE OF ILLINOIS
 DEPARTMENT OF TRANSPORTATION**

MAINTENANCE OF TRAFFIC SOUTH TRI LEVEL - ROADWAY D (STAGE 2)

SCALE: 1"=10' SHEET NO. 4 OF 9 SHEETS STA. 5033+00.00 TO STA. 5033+00.00

F.A.I. RTE.	SECTION	COUNTY	TOTAL SHEETS	SHEET NO.
57/70	(25-3)R	EFFINGHAM	1416	1302
CONTRACT NO. 74296			ILLINOIS FED. AID PROJECT	