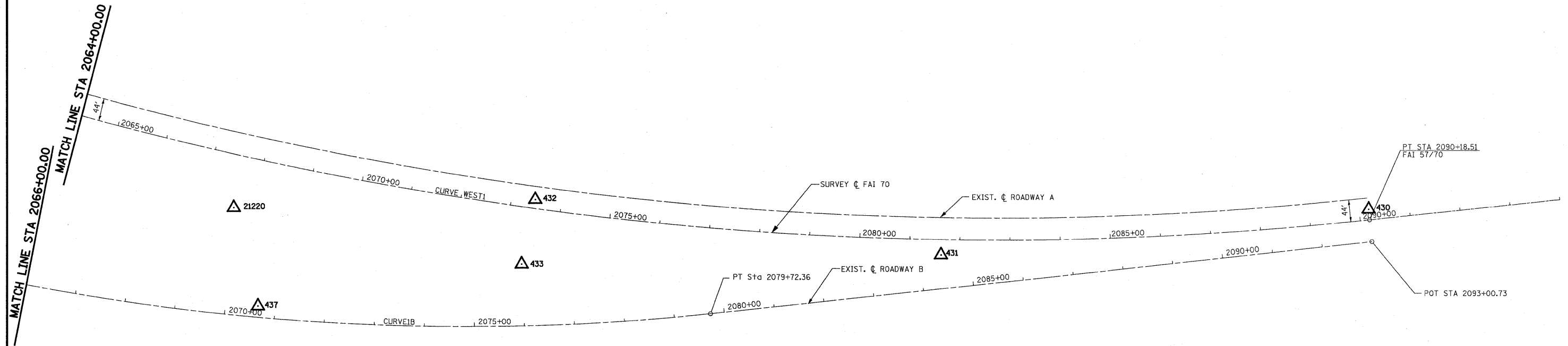


EXIST. SURVEY C FAI 70  
 EXIST. CURVE WEST1  
 PI STA. = 2059+53.47  
 $\Delta = 55^\circ 59' 40''$  (LT)  
 $D = 0^\circ 49' 59''$   
 $R = 6,877.84'$   
 $T = 3,656.59'$   
 $L = 6,721.63'$   
 $E = 911.60'$   
 P.C. STA. = 2022+96.89  
 P.T. STA. = 2090+18.51

EXIST. ROADWAY B  
 EXIST. CURVE CURVE1B  
 PI STA. = 2057+83.65  
 $\Delta = 61^\circ 25' 59''$  (LT)  
 $D = 1^\circ 15' 05''$   
 $R = 4,578.30'$   
 $T = 2,720.18'$   
 $L = 4,908.89'$   
 $E = 747.13'$   
 P.C. STA. = 2030+63.47  
 P.T. STA. = 2079+72.36



BENCHMARK #508:  
 CHISELED SQUARE ON MEDIAN INLET I-57/70  
 STA 2092+94 0.7' RT  
 ELEV 592.11

BENCHMARK #509:  
 CHISELED SQUARE ON WEST CONCRETE BASE OF  
 OVERHEAD SIGN ON I-57/70 "SOUTH MEMPHIS,  
 WEST ST. LOUIS"  
 STA. 2078+07 86.8' LT  
 ELEV 581.46

SURVEY C FAI 70

DESCRIPTION	COORDINATE	
	NORTHING	EASTING
POT STA 1966+63.14	881449.64	906570.31
PC STA 2022+96.89	883392.73	911858.36
PI STA 2059+53.47	884653.89	915290.58
PT STA 2090+18.51	888204.48	916164.64

EXISTING ROADWAY B

DESCRIPTION	COORDINATE	
	NORTHING	EASTING
PC STA 2030+63.47	883571.91	912609.18
PI STA 2057+83.65	884263.88	915239.88
PT STA 2079+72.36	886905.21	915890.10
POT STA 2092+99.59	888193.96	916207.36

CONTROL POINTS

CONTROL POINT	COORDINATE	
	NORTHING	EASTING
437	886061.10	915567.38
21220	886082.88	915366.17
432	886654.25	915557.06
433	886584.80	915668.79
431	887377.45	915937.24
430	888210.11	916143.88



FILE NAME = S:\Projects\MD\8872.57-78\Draw\Paper\Scale\Hct.stb.dgn	USER NAME = paul	DESIGNED - JWS	REVISED -	<b>STATE OF ILLINOIS DEPARTMENT OF TRANSPORTATION</b>	<b>HORIZONTAL CONTROL, FAI ROUTES 57/70, SOUTH TRI LEVEL</b>	F.A.I. RTE. 57/70	SECTION (25-3)BR	COUNTY EFFINGHAM	TOTAL SHEETS 1416	SHEET NO. 1346		
PLOT SCALE = 200.0000' / IN.	CHECKED - BRM	REVISED -	SCALE: 1"=100'			SHEET NO. 3 OF 6 SHEETS	STA. 2066+00.00 TO STA. 2094+00.00	FED. ROAD DIST. NO. ILLINOIS FED. AID PROJECT		CONTRACT NO. 74296		
PLOT DATE = 2/11/2010	DATE - 8-01-08	REVISED -										