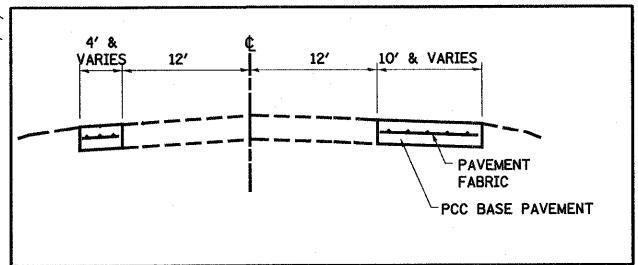
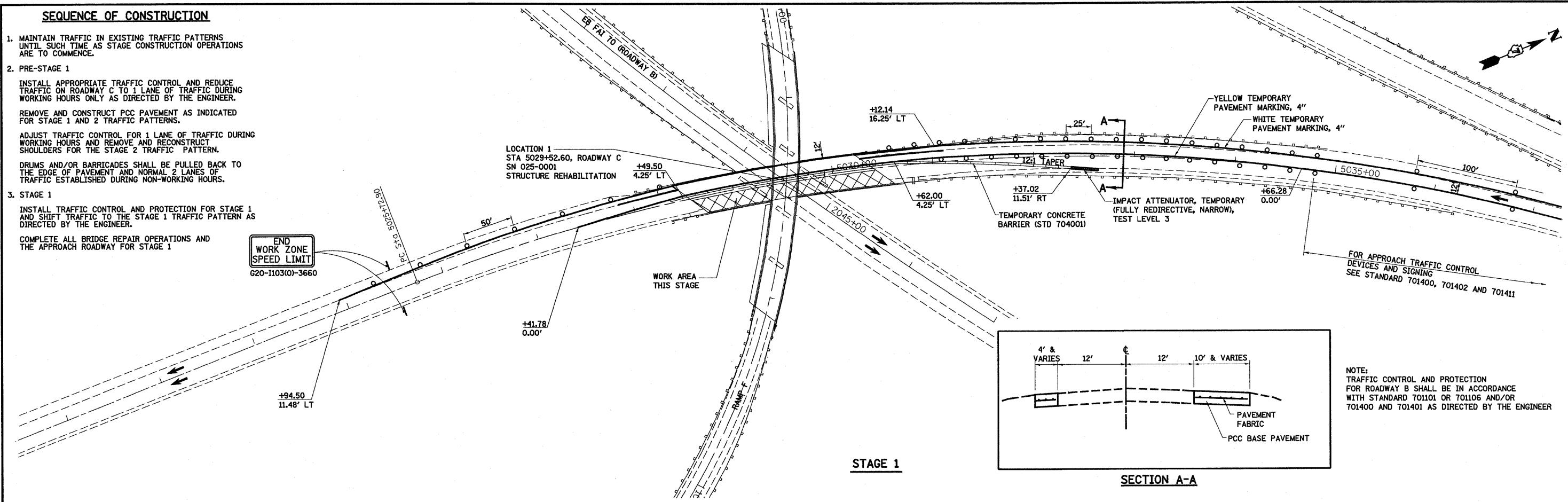


**SEQUENCE OF CONSTRUCTION**

1. MAINTAIN TRAFFIC IN EXISTING TRAFFIC PATTERNS UNTIL SUCH TIME AS STAGE CONSTRUCTION OPERATIONS ARE TO COMMENCE.
2. PRE-STAGE 1  
 INSTALL APPROPRIATE TRAFFIC CONTROL AND REDUCE TRAFFIC ON ROADWAY C TO 1 LANE OF TRAFFIC DURING WORKING HOURS ONLY AS DIRECTED BY THE ENGINEER.  
 REMOVE AND CONSTRUCT PCC PAVEMENT AS INDICATED FOR STAGE 1 AND 2 TRAFFIC PATTERNS.  
 ADJUST TRAFFIC CONTROL FOR 1 LANE OF TRAFFIC DURING WORKING HOURS AND REMOVE AND RECONSTRUCT SHOULDERS FOR THE STAGE 2 TRAFFIC PATTERN.  
 DRUMS AND/OR BARRICADES SHALL BE PULLED BACK TO THE EDGE OF PAVEMENT AND NORMAL 2 LANES OF TRAFFIC ESTABLISHED DURING NON-WORKING HOURS.
3. STAGE 1  
 INSTALL TRAFFIC CONTROL AND PROTECTION FOR STAGE 1 AND SHIFT TRAFFIC TO THE STAGE 1 TRAFFIC PATTERN AS DIRECTED BY THE ENGINEER.  
 COMPLETE ALL BRIDGE REPAIR OPERATIONS AND THE APPROACH ROADWAY FOR STAGE 1

END WORK ZONE SPEED LIMIT  
G20-1103(0)-3660



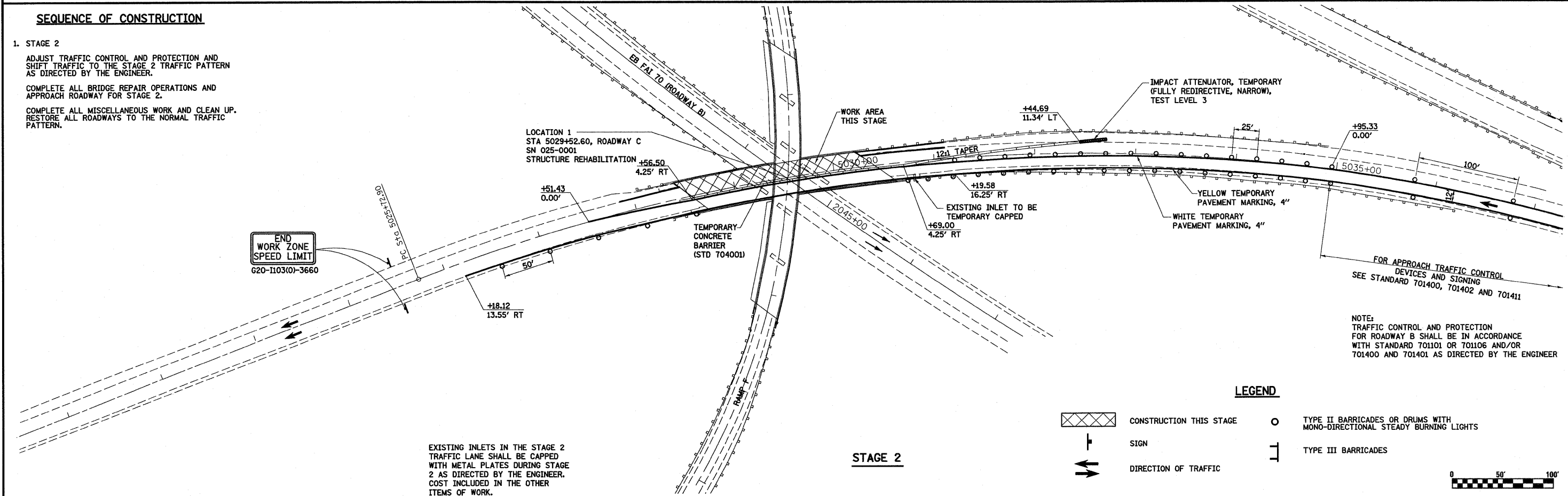
STAGE 1

SECTION A-A

**SEQUENCE OF CONSTRUCTION**

1. STAGE 2  
 ADJUST TRAFFIC CONTROL AND PROTECTION AND SHIFT TRAFFIC TO THE STAGE 2 TRAFFIC PATTERN AS DIRECTED BY THE ENGINEER.  
 COMPLETE ALL BRIDGE REPAIR OPERATIONS AND APPROACH ROADWAY FOR STAGE 2.  
 COMPLETE ALL MISCELLANEOUS WORK AND CLEAN UP. RESTORE ALL ROADWAYS TO THE NORMAL TRAFFIC PATTERN.

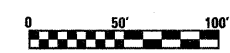
END WORK ZONE SPEED LIMIT  
G20-1103(0)-3660



STAGE 2

**LEGEND**

- CONSTRUCTION THIS STAGE
- TYPE II BARRICADES OR DRUMS WITH MONO-DIRECTIONAL STEADY BURNING LIGHTS
- SIGN
- TYPE III BARRICADES
- DIRECTION OF TRAFFIC



EXISTING INLETS IN THE STAGE 2 TRAFFIC LANE SHALL BE CAPPED WITH METAL PLATES DURING STAGE 2 AS DIRECTED BY THE ENGINEER. COST INCLUDED IN THE OTHER ITEMS OF WORK.

FILE NAME =	USER NAME = paul	DESIGNED - JWS	REVISED -
S:\Projects\403-00072-57-70\dgn\Br Repair\South\1101 52.5711 Roadway C.dgn		DRAWN - PDB	REVISED -
PLOT SCALE = 1/80,0000' / IN.		CHECKED - BRM	REVISED -
PLOT DATE = 2/12/2010		DATE - 7-21-08	REVISED -

STATE OF ILLINOIS  
DEPARTMENT OF TRANSPORTATION

LOCATION 1	
MAINTENANCE OF TRAFFIC, SOUTH TRI LEVEL ROADWAY C	
SCALE: 1"=50'	SHEET NO. 1 OF 1 SHEETS
STA.	TO STA.

F.A.I. RTE.	SECTION	COUNTY	TOTAL SHEETS	SHEET NO.
57/70	(25-3)BR	EFFINGHAM	1416	1353
CONTRACT NO. 74296				
FED. ROAD DIST. NO. ILLINOIS FED. AID PROJECT				