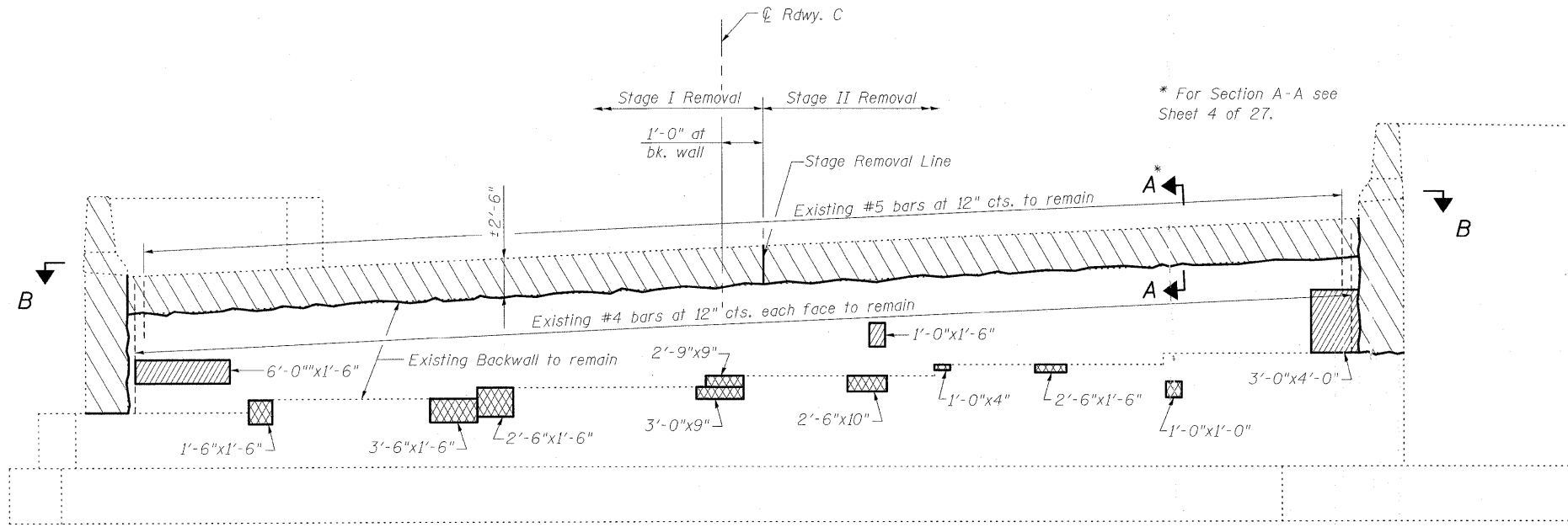
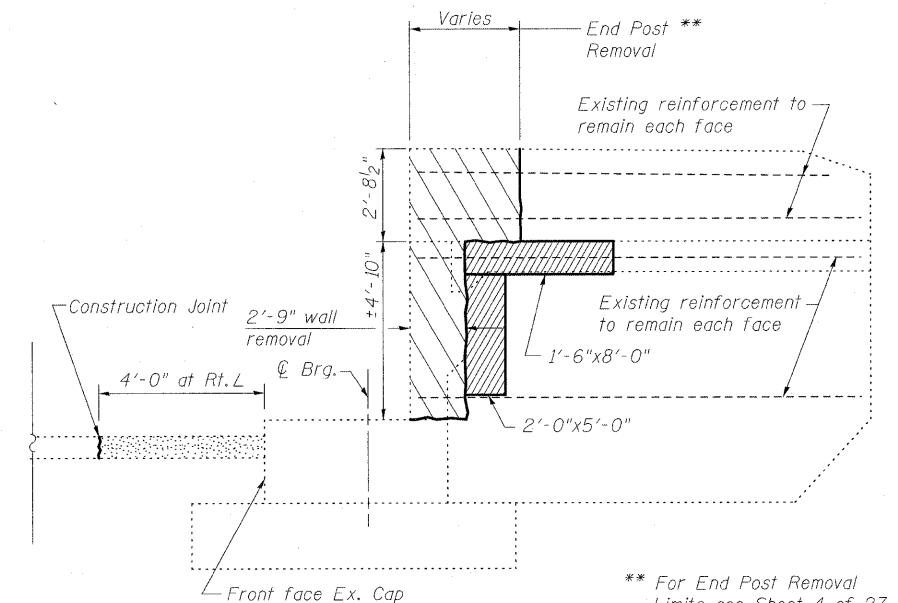


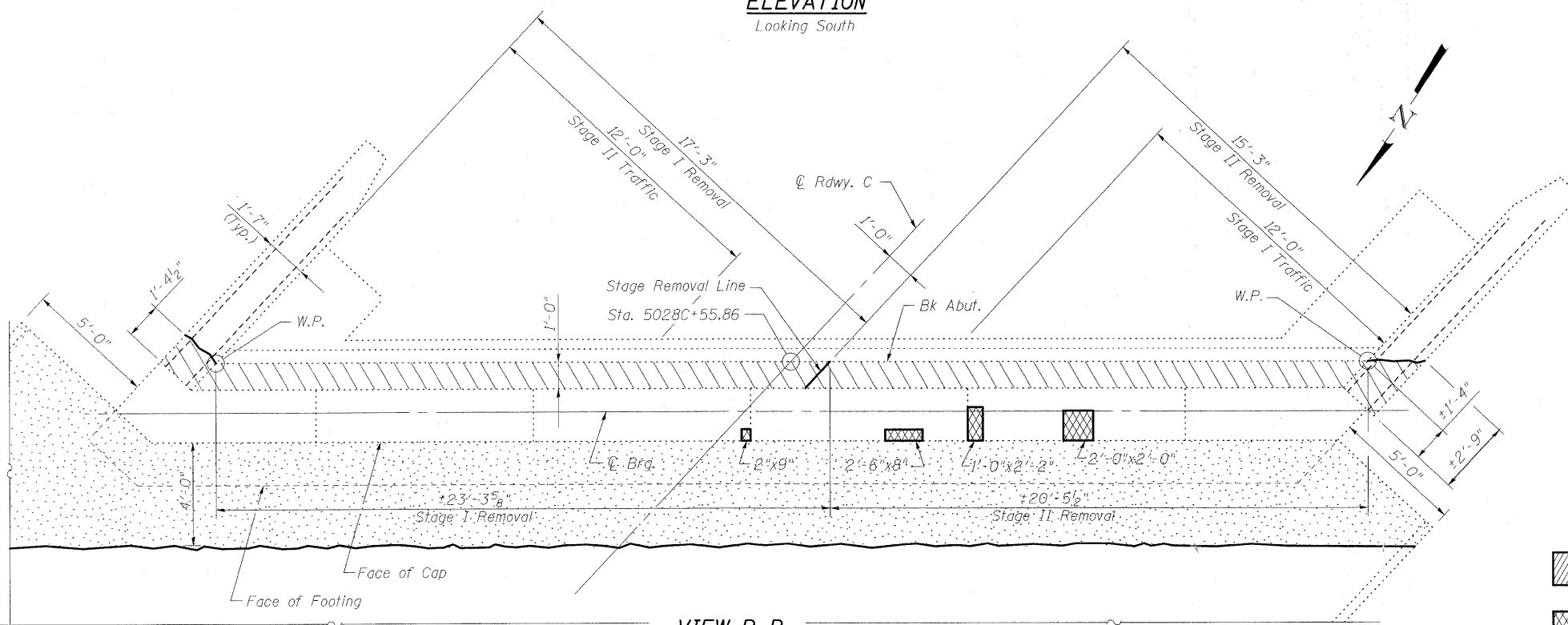
STATE OF ILLINOIS  
DEPARTMENT OF TRANSPORTATION



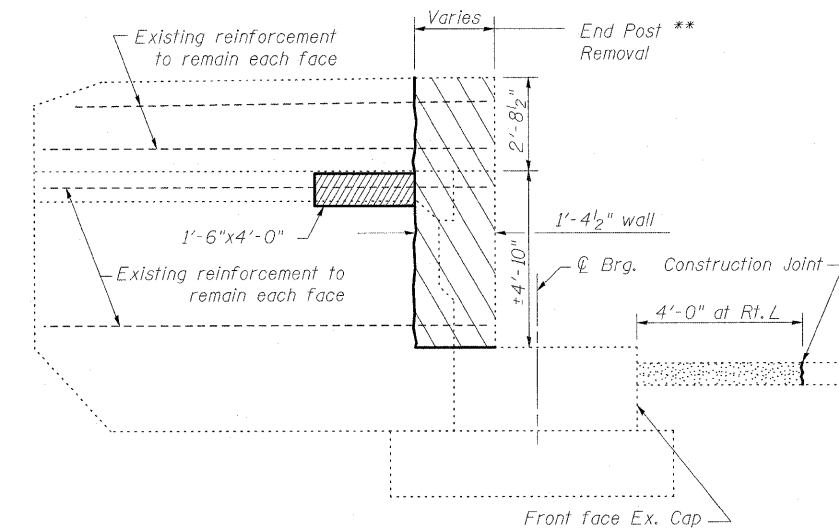
**ELEVATION**  
Looking South



**WEST WING WALL**







**VIEW B-B**  
SOUTH ABUTMENT



**EAST WING WALL**

**LEGEND**

-  Indicates Structural Repair of Concrete
-  Indicates Unsound Concrete Removal
-  Indicates Concrete Removal
-  Indicates Slope wall Removal

**BILL OF MATERIAL**

Item	Unit	Total
Concrete Removal	Cu. Yd.	5.2
Structural Repair of Concrete (Depth equal to or less than 5")	Sq. Ft.	51
Unsound Concrete Removal	Sq. Yd.	3.4

**CONCRETE REMOVAL & REPAIR**  
**SOUTH ABUTMENT**  
**STRUCTURE NO. 025-0001**

DESIGNED	B.B.
CHECKED	C.J.F.
DRAWN	W.J.S.
CHECKED	C.J.F. & B.B.



**BERNARDIN  
LOCHMUELLER &  
ASSOCIATES, INC.**

3 Oak Drive  
Maryville, IL 62452-5635  
Local (618) 288-4665  
Fax 618-288-4666

SHEET NO. 15	F.A.I. RTE.	SECTION	COUNTY	TOTAL SHEETS	SHEET NO.
	57	(25-3HB)I-2	EFFINGHAM	1416	1369
27 SHEETS	SN 025-0001		CONTRACT NO. 74296		
FED. ROAD DIST. NO. 7 ILLINOIS FED. AID PROJECT					