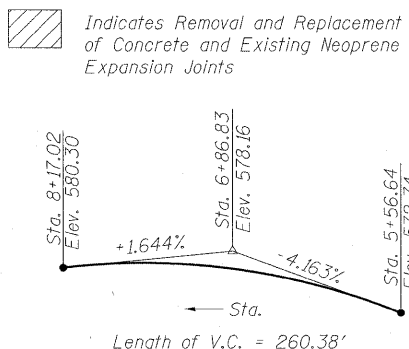
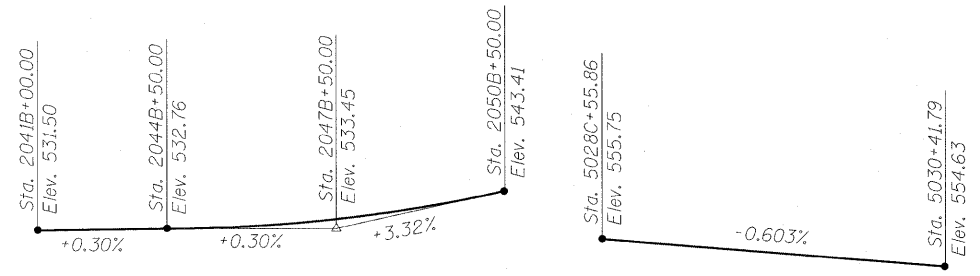
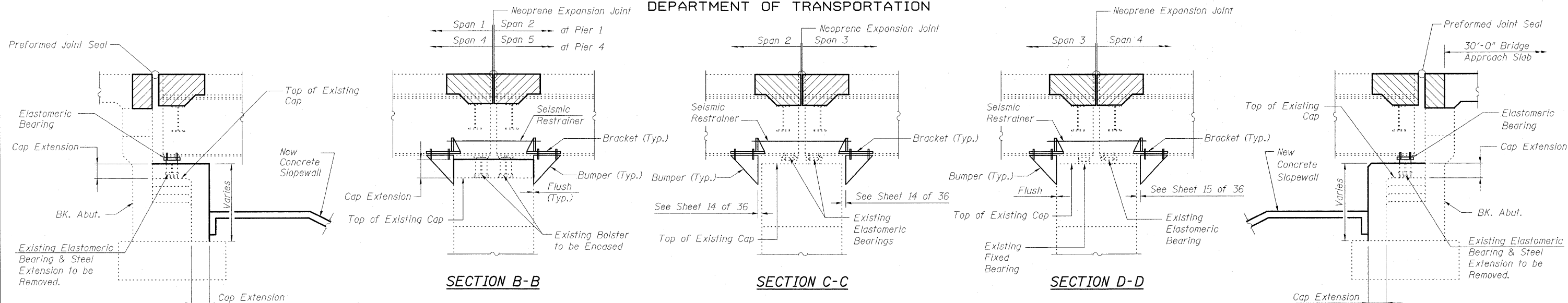
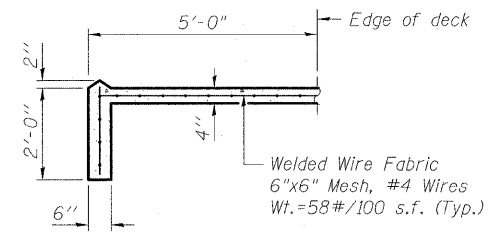


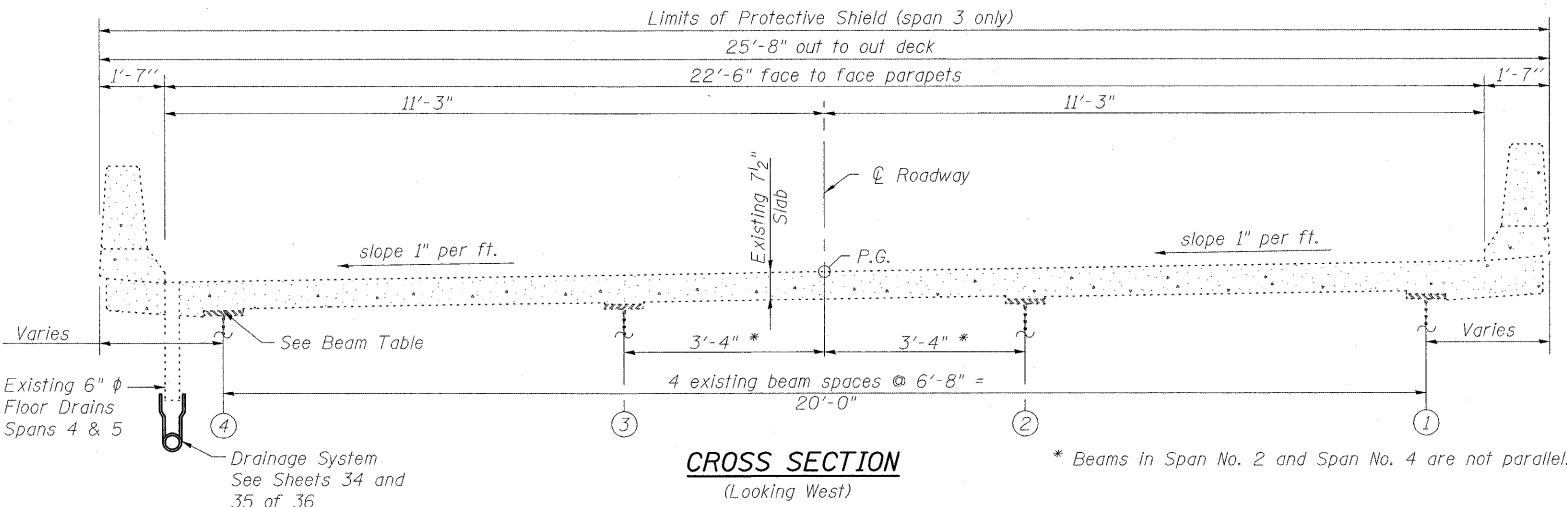
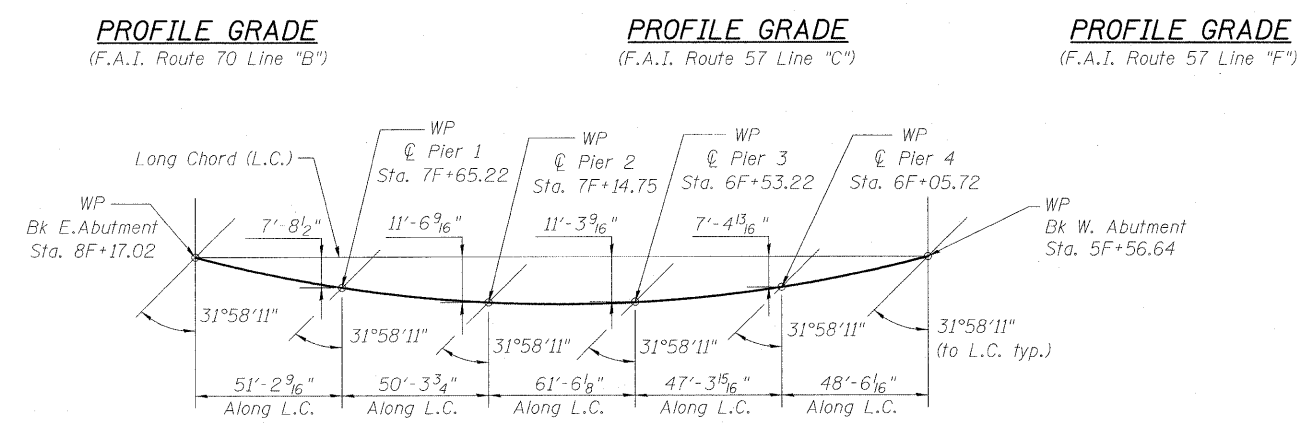
STATE OF ILLINOIS
DEPARTMENT OF TRANSPORTATION



Indicates Removal and Replacement of Concrete and Existing Neoprene Expansion Joints



BEAM TABLE					
	Span 1	Span 2	Span 3	Span 4	Span 5
Beam No. 1	36WF150	36WF150	36WF182	36WF150	36WF150
Beam No. 2	33WF141	33WF141	36WF182	33WF130	33WF130
Beam No. 3	33WF141	33WF141	36WF182	33WF130	33WF130
Beam No. 4	36WF150	36WF150	36WF182	36WF150	36WF150



HORIZONTAL CURVE DATA	HORIZONTAL CURVE DATA	HORIZONTAL CURVE DATA
(Existing F.A.I. 70 Line "B") P.I. Sta. 2057B+83.65 Line "B" Δ = 61°25'59" (LT) D = 1°15'05" R = 4578.30' T = 2720.18 L = 4908.89' E = 747.13	(Existing F.A.I. 57 Line "C") P.I. Sta. 5032C+76.40 Line "C" Δ = 42° 31' 30" (RT) D = 3° 10' 09" R = 1807.88' T = 703.50' L = 1341.81' E = 132.05'	(Existing F.A.I. 70 Line "F") P.I. Sta. 12F+67.74 Line "F" Δ = 115° 16' 56" (RT) D = 8° 12' 35" R = 697.91' T = 1101.47' L = 1404.23' E = 606.05'

DESIGNED	B.B.
CHECKED	C.J.F.
DRAWN	W.J.S.
CHECKED	C.J.F. & B.B.

GENERAL INFORMATION
STRUCTURE NO. 025-0018

SHEET NO. 3 36 SHEETS	F.A.I. RTE.	SECTION	COUNTY	TOTAL SHEETS	SHEET NO.
	57	(25-3HB)I-3	EFFINGHAM	1416	1384
SN 025-0018			CONTRACT NO. 74296		
FED. ROAD DIST. NO. 7 ILLINOIS FED. AID PROJECT					

BERNARDIN LOCHMUELLER & ASSOCIATES, INC.
3 Oak Drive
Merrville, IL 62062-5635
Local (618) 288-4665
Fax 618-288-4995