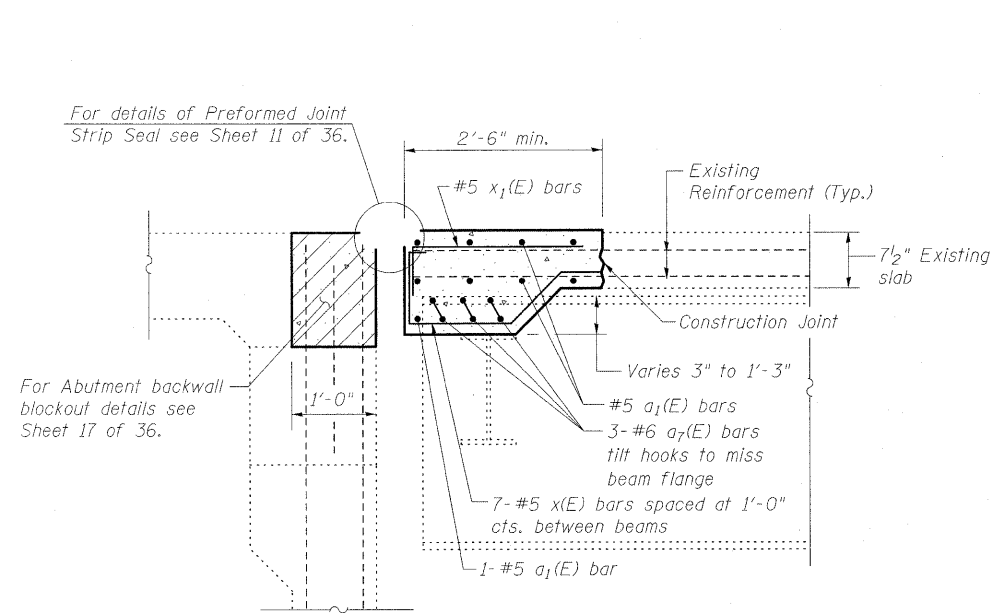
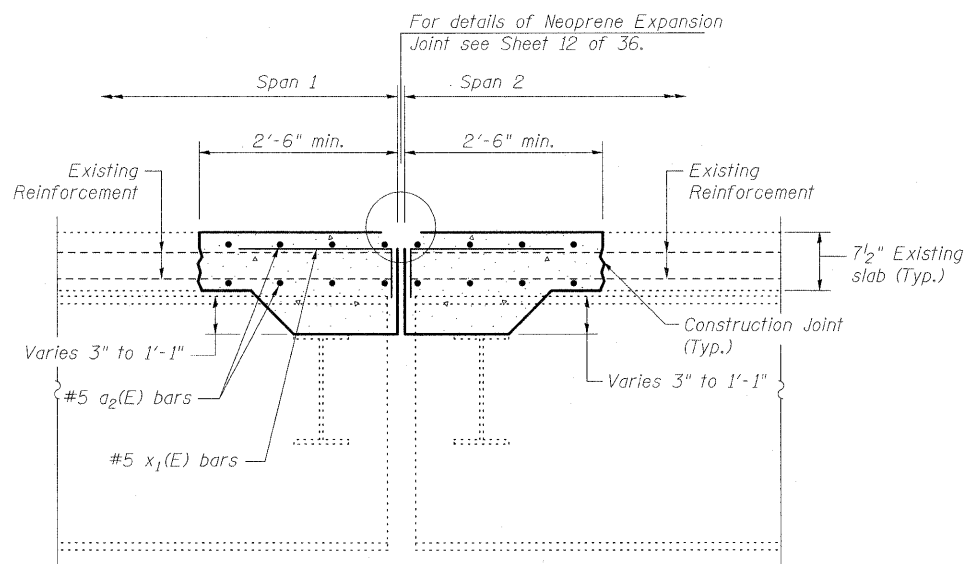


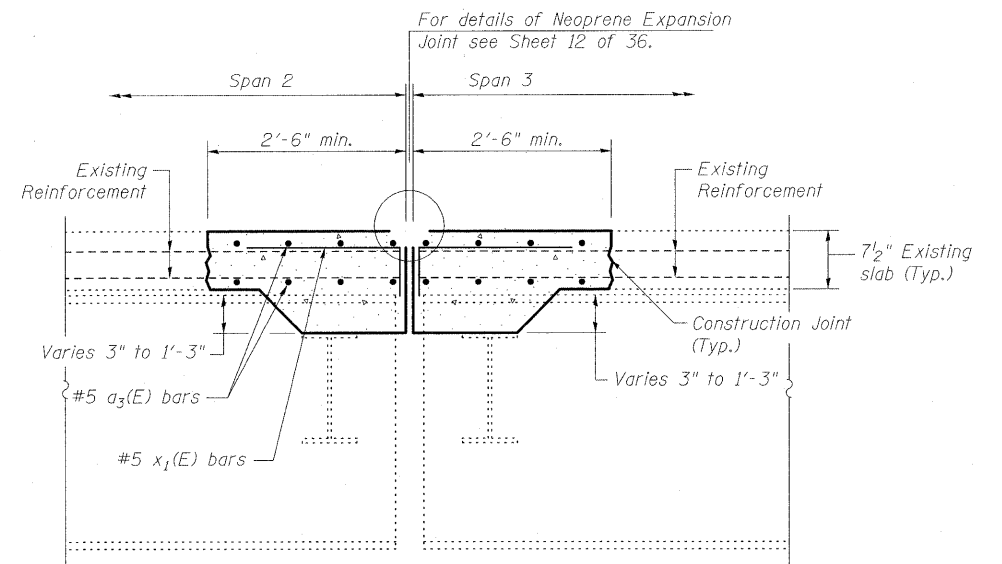
STATE OF ILLINOIS
DEPARTMENT OF TRANSPORTATION



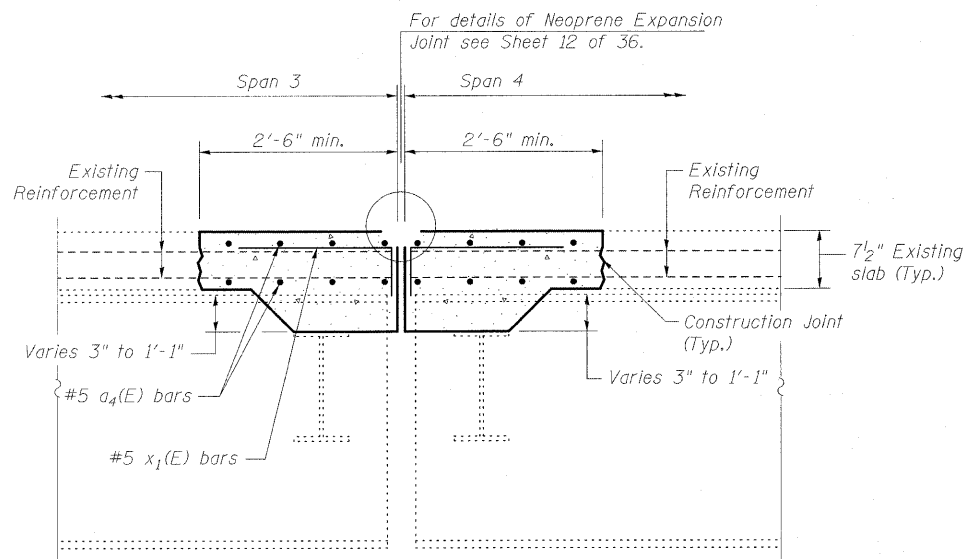
SECTION A-A
(East Abutment)



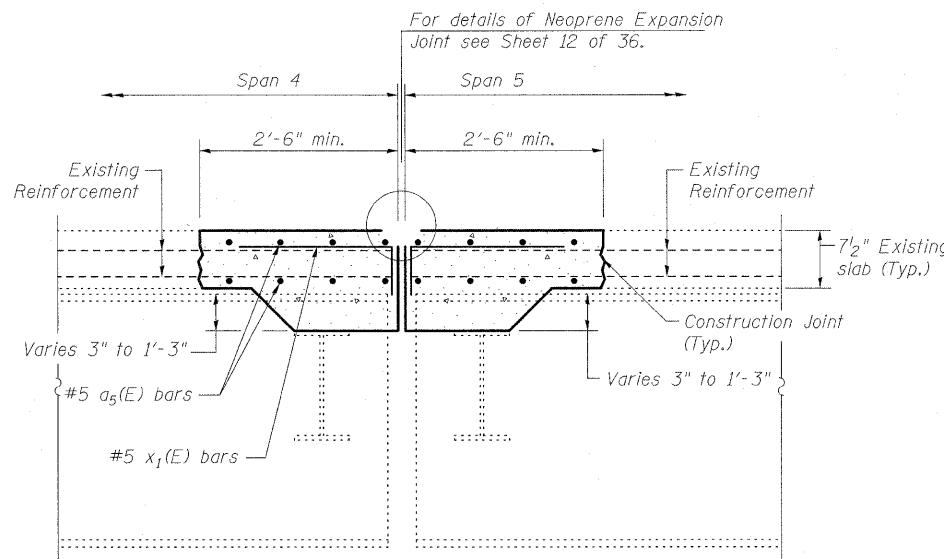
SECTION B-B
(Pier 1)



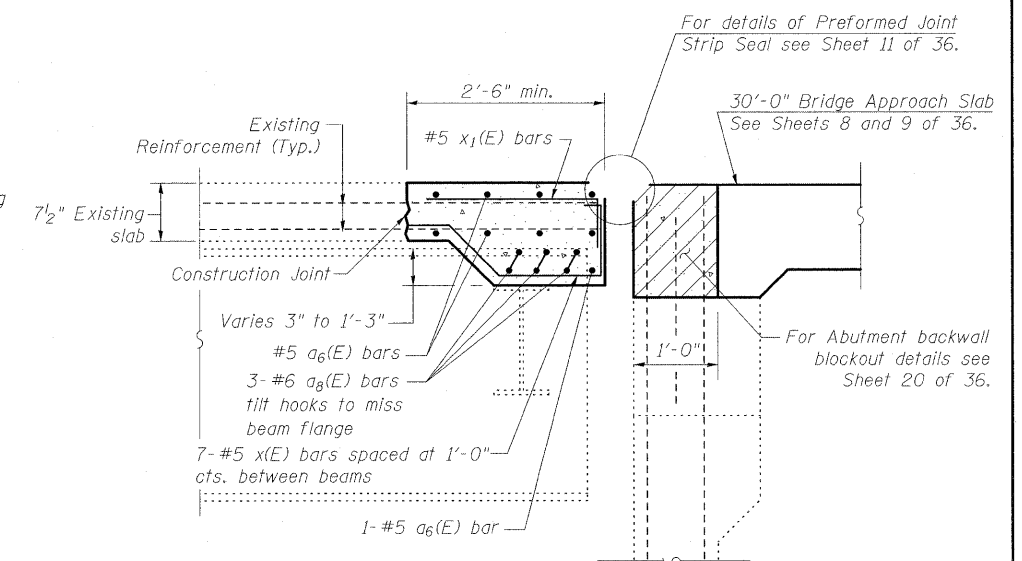
SECTION D-D
(Pier 2)



SECTION E-E
(Pier 3)



SECTION F-F
(Pier 4)



SECTION G-G
(West Abutment)

Notes:
Dimensions shown are at right angles to deck joints.
Place x(E) and x1(E) bars parallel to beams.

**SUPERSTRUCTURE
SLAB REPAIR DETAILS
STRUCTURE NO. 025-0018**

DESIGNED	B.B.
CHECKED	C.J.F.
DRAWN	W.J.S.
CHECKED	C.J.F. & B.B.



**BERNARDIN
LOCHMUELLER &
ASSOCIATES, INC.**

3 Oak Drive
Marysville, IL 62962-5635
Local (618) 288-4885
Fax 618-288-4866

SHEET NO. 6 36 SHEETS	F.A.I. RTE.	SECTION	COUNTY	TOTAL SHEETS	SHEET NO.
	57	(25-3HB)I-3	EFFINGHAM	1416	1387
SN 025-0018			CONTRACT NO. 74296		
FED. ROAD DIST. NO. 7 ILLINOIS FED. AID PROJECT					