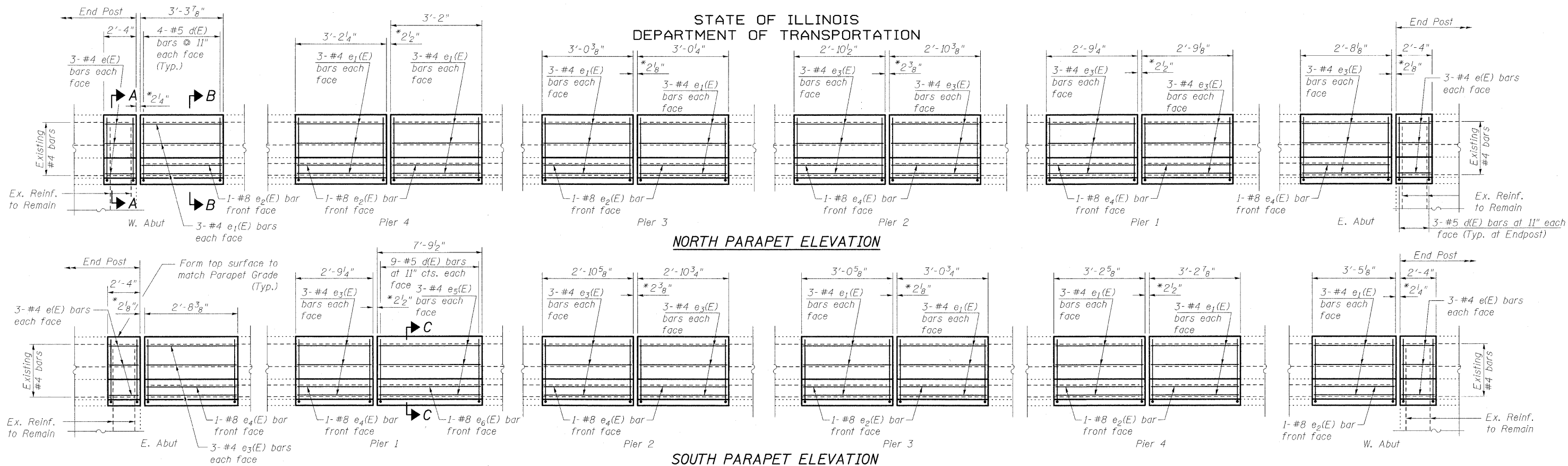
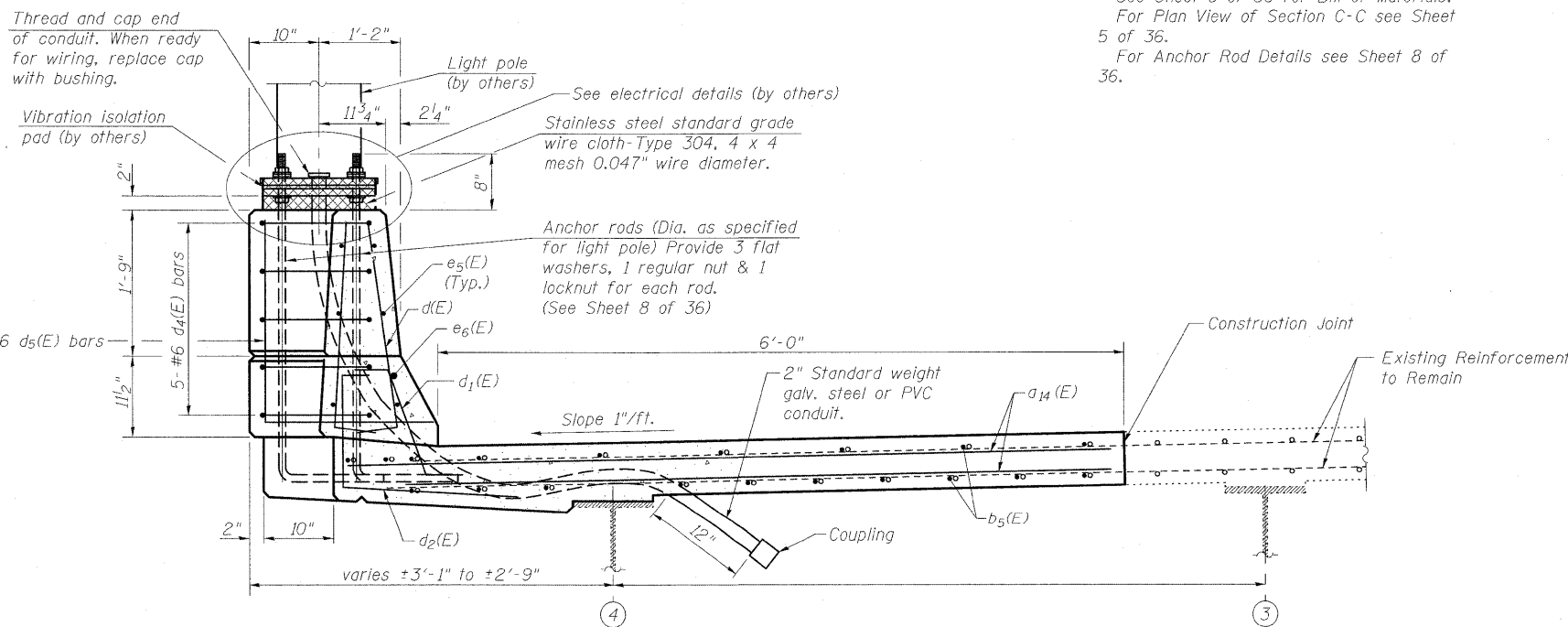
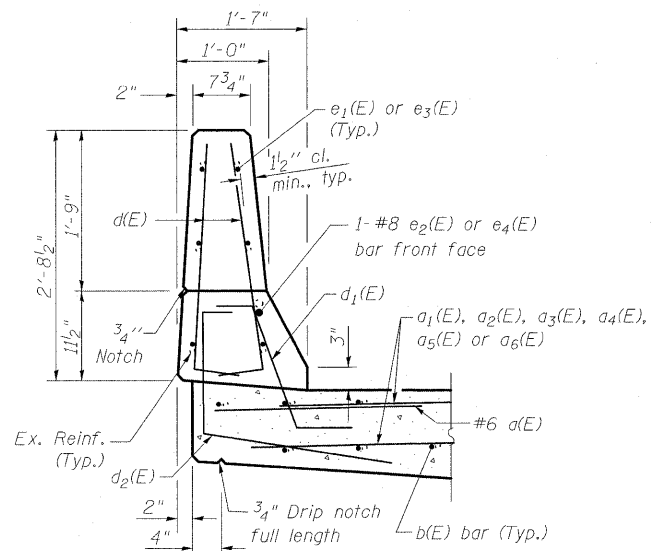
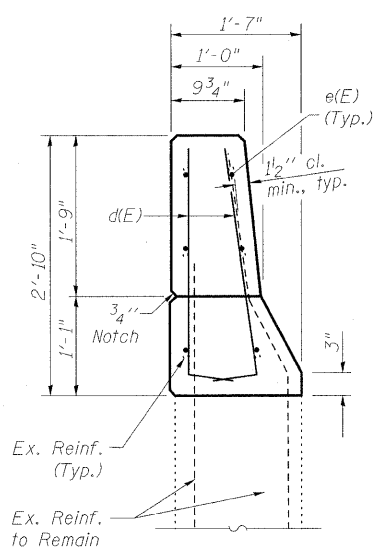


STATE OF ILLINOIS
DEPARTMENT OF TRANSPORTATION



* Dimensions are along the length of the parapet at 50° F.

Note:
Quantity of End Post Concrete included with Concrete Superstructures. See Sheet 8 of 36 for Bill of Materials. For Plan View of Section C-C see Sheet 5 of 36. For Anchor Rod Details see Sheet 8 of 36.



DESIGNED	B.B.
CHECKED	C.J.F.
DRAWN	W.J.S.
CHECKED	C.J.F. & B.B.



**BERNARDIN
LOCHMUELLER &
ASSOCIATES, INC.**

3 Oak Drive
Maryville, IL 62062-5635
Local (618) 288-4665
Fax 618-288-4666

SHEET NO. 7
36 SHEETS

F.A.I. RTE.	SECTION	COUNTY	TOTAL SHEETS	SHEET NO.
57	(25-3HB)I-3	EFFINGHAM	1416	1388
SN 025-0018		CONTRACT NO. 74296		
FED. ROAD DIST. NO. 7 ILLINOIS FED. AID PROJECT				

**PARAPET DETAILS
STRUCTURE NO. 025-0018**