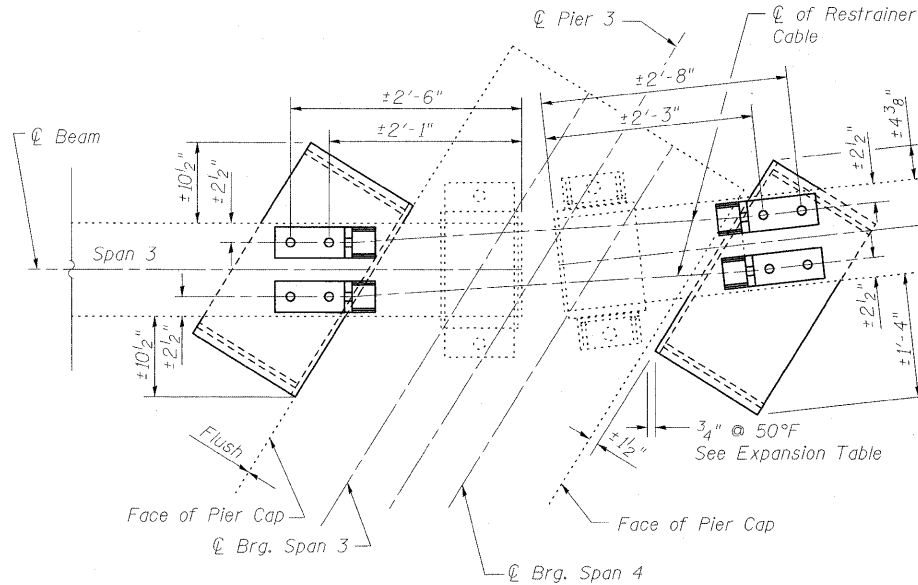
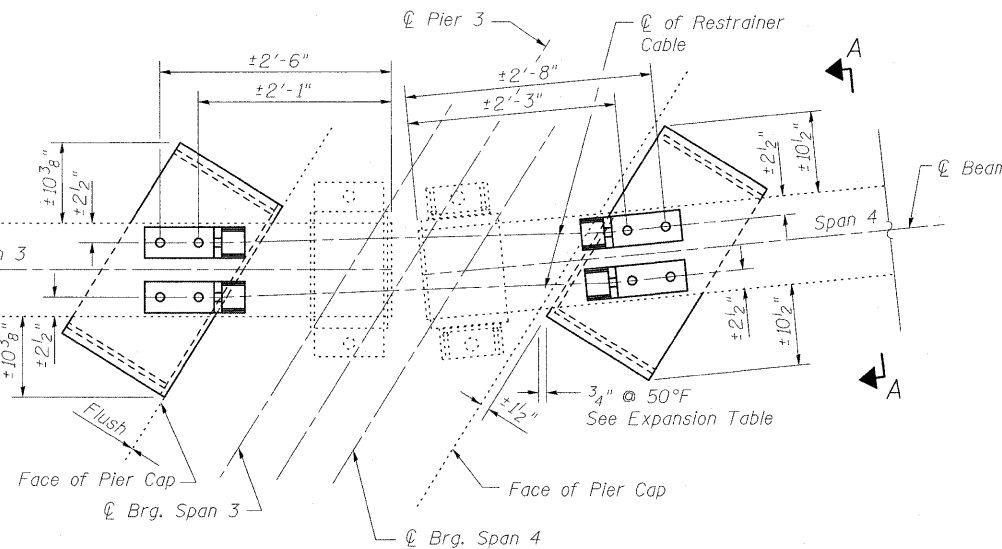


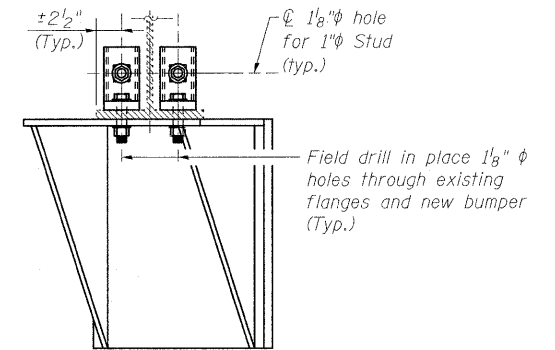
STATE OF ILLINOIS
DEPARTMENT OF TRANSPORTATION



PIER 3 PLAN
(Beam 4)

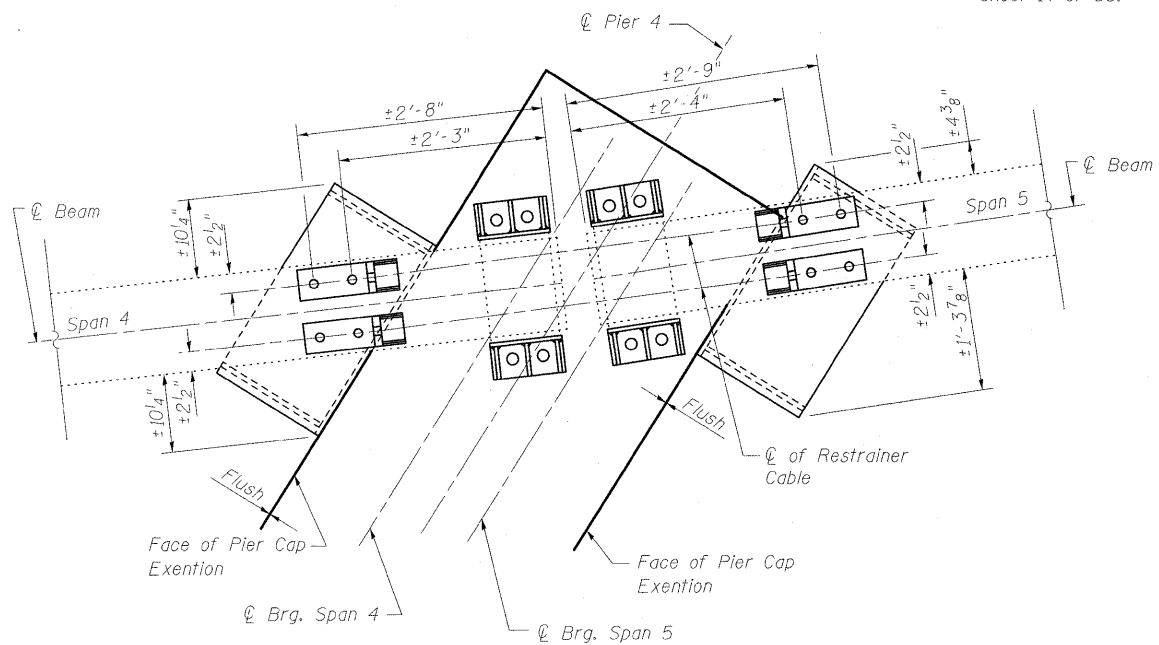


PIER 3 PLAN
(Beams 1, 2 & 3)

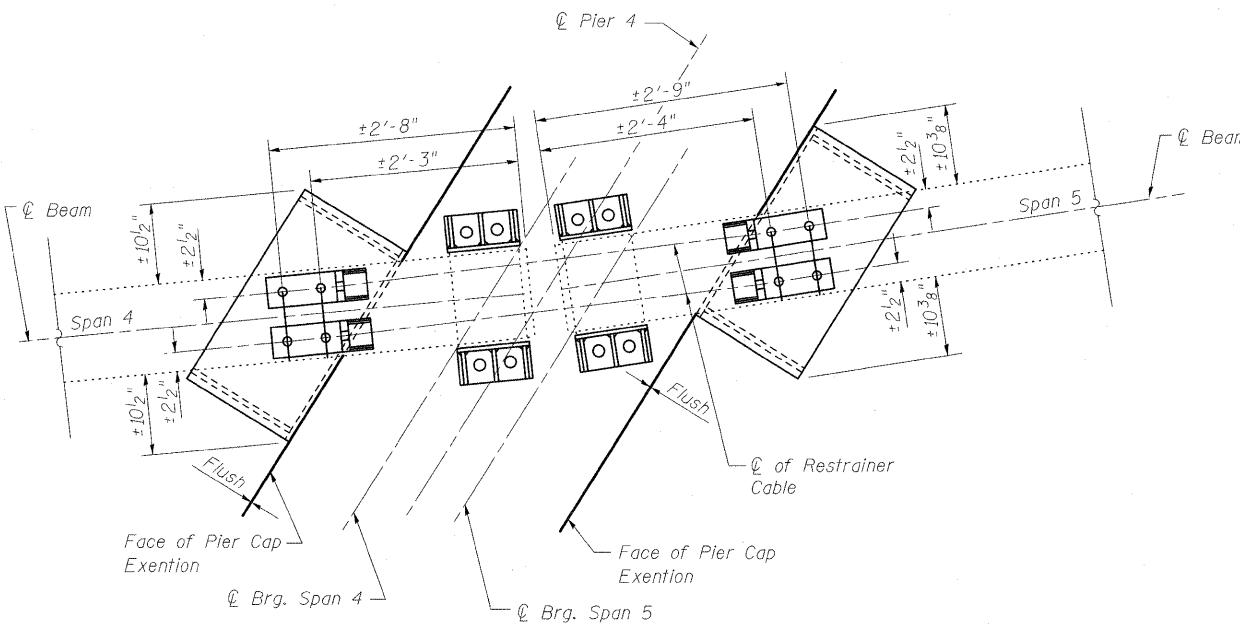


SECTION A-A
Bumper shown on skew

Notes:
The backing off of the nut in step 5 of Cable Restrainer Unit Installation Procedure on sheet 13 of 36 should be omitted at Pier 4.
The disc springs should be fully compressed during installation at Pier 4, Span 4.
For Bumper Details see sheet 14 of 36.



PIER 4 PLAN
(Beam 4)



PIER 4 PLAN
(Beams 1, 2 & 3)

Ambient Temperature	Gap
T < 50°F	3/4" - ΔTemp
T = 50°F	3/4"
T > 50°F	3/4" + ΔTemp

*ΔTemp = 1/32" for every ±10°F (Typ.)

EXPANSION TABLE

BILL OF MATERIAL

Item	Unit	Total
Seismic Restrainer	Each	16
Furnishing & Erecting Structural Steel	Pound	9839

Notes:
For General Elevation Views of Seismic Restrainers, see Sections B-B thru D-D on Sheet 3 of 36.
Seismic Restrainers shall be placed on each beam line.
Two hardened washers are required for each set of oversized holes.
Bumpers shall be paid for as Furnishing and Erecting Structural Steel.

BUMPER DETAILS
STRUCTURE NO. 025-0018

DESIGNED	B.B.
CHECKED	C.J.F.
DRAWN	W.J.S.
CHECKED	C.J.F. & B.B.



**BERNARDIN
LOCHMUELLER &
ASSOCIATES, INC.**

3 Oak Drive
Maryville, IL 62062-5635
Local (618) 288-4665
Fax 618-288-4666

SHEET NO. 15 36 SHEETS	F.A.I. RTE.	SECTION	COUNTY	TOTAL SHEETS	SHEET NO.
	57	(25-3HB)I-3	EFFINGHAM	1416	1396
SN 025-0018			CONTRACT NO. 74296		
FED. ROAD DIST. NO. 7 ILLINOIS FED. AID PROJECT					