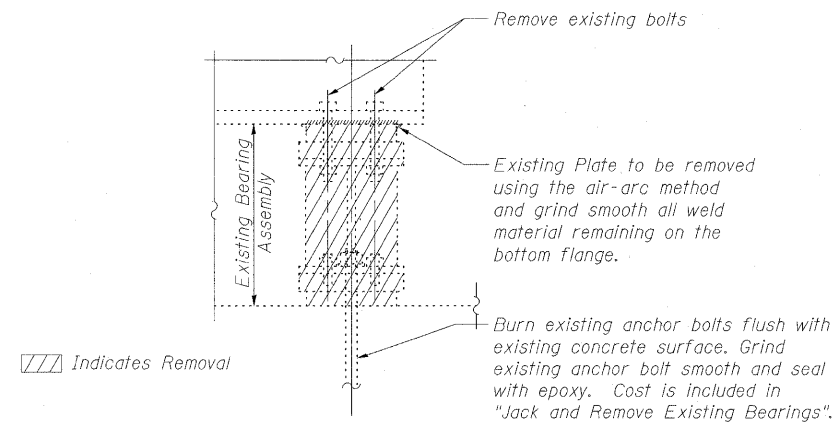
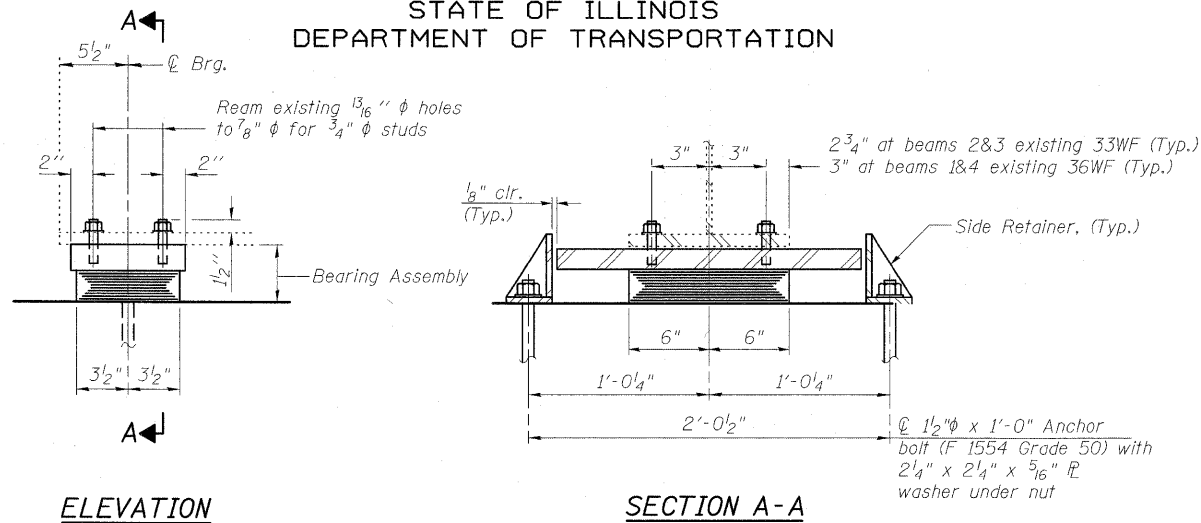


STATE OF ILLINOIS
DEPARTMENT OF TRANSPORTATION



EXISTING BEARING REMOVAL DETAIL

(8 Required)
4 at each Abutment



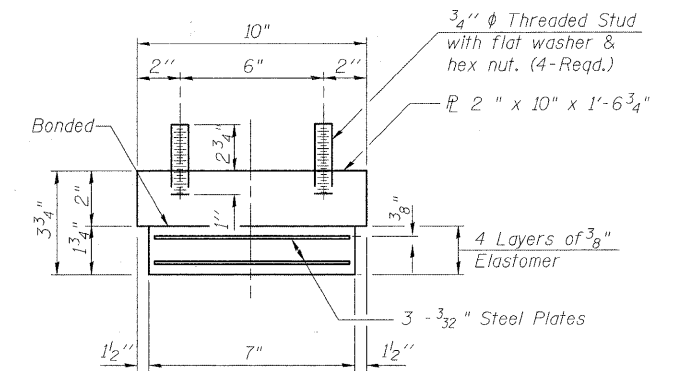
ELEVATION

SECTION A-A

TYPE I ELASTOMERIC EXP. BRG.

(8 Required)
4 at each Abutment

Note:
W. Abut. Anchor Bolts are offset from centerline of bearing. (See Sheet 21 Of 36)

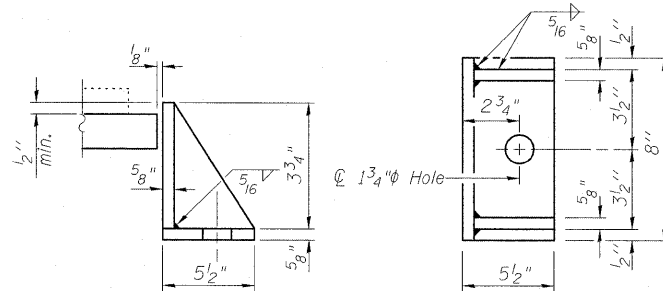


BEARING ASSEMBLY

PROCEDURE TO JACK AND REMOVE EXISTING BEARINGS

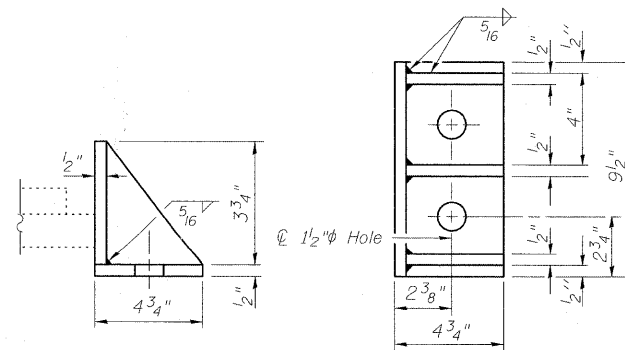
(East & West Abutments)
(Minimum Jack Capacity Required 25 tons at Abutment)

1. Jack and Remove Existing Bearings shall be conducted according to the Bridge Special Provision "Jack and Remove Existing Bearings." See Interior Beam Reaction Table for loads.
2. Jacking and removing existing bearings shall be done after partial deck concrete removal and before new deck concrete is poured.
3. Four beams may be lifted simultaneously.
4. The existing anchor bolts shall be cut off flush with the existing bridge seat, the rockers, top and bottom plates shall be removed.
5. Formwork and bearing seat construction shall occur.
6. The new elastomeric bearings shall be placed and the jacks shall be lowered.
7. The new holes for the side retainers shall be drilled at the locations specified.
8. No Bearing Replacement is required at Pier 1, Pier 2, Pier 3 and Pier 4. Clean and paint as specified for Structural Steel.



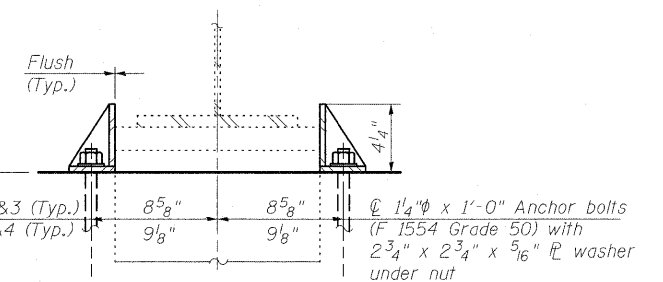
SIDE RETAINER AT ABUTMENTS

Equivalent rolled angle with stiffeners will be allowed in lieu of welded plates.



SIDE RETAINER AT ENCASED FIXED BEARINGS

Equivalent rolled angle with stiffeners will be allowed in lieu of welded plates.



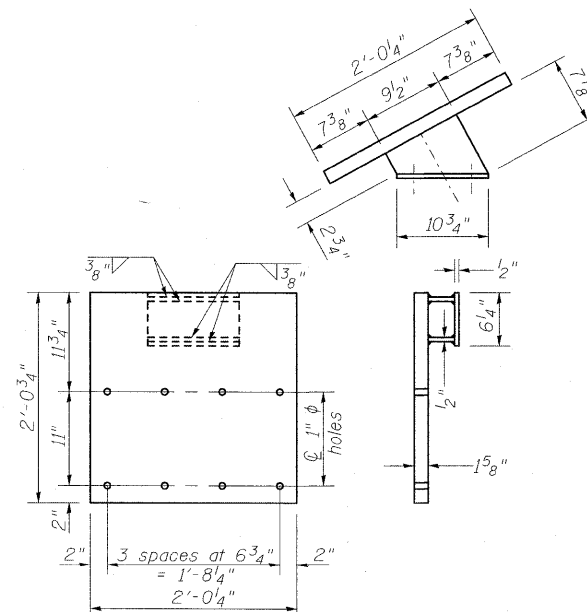
SIDE RETAINERS AT ENCASED FIXED BEARINGS PIERS 1 & 4

INTERIOR BEAM REACTION TABLE			
		E. Abut.	W. Abut.
R 2	(k)	25.1	23.2
R 4	(k)	35.3	34.7
Imp.	(k)	10.2	10.1
R Total	(k)	70.6	68.0

BILL OF MATERIAL

Item	Unit	Total
Elastomeric Bearing Assembly Type I	Each	8
Anchor Bolts, 1 1/4"	Each	62
Anchor Bolts, 1 1/2"	Each	16
Jack & Remove Existing Bearings	Each	8

**BEARING DETAILS
STRUCTURE NO. 025-0018**



ALT. SIDE RETAINER AT PIER 1, SPAN 2, BEAM 4

(see sheet 14 of 36 for location)
(see sheet 23 of 36 for Embedded Anchor layout)

DESIGNED	B.B.
CHECKED	C.J.F.
DRAWN	W.J.S.
CHECKED	C.J.F. & B.B.



**BERNARDIN
LOCHMUELLER &
ASSOCIATES, INC.**

3 Oak Drive
Maryville, IL 62452-9635
Local (618) 338-4665
Fax 618-338-4666

SHEET NO. 16 36 SHEETS	F.A.I. RTE. 57	SECTION (25-3HB)I-3	COUNTY EFFINGHAM	TOTAL SHEETS 1416	SHEET NO. 1397
	SN 025-0018		CONTRACT NO. 74296		
FED. ROAD DIST. NO. 7 ILLINOIS FED. AID PROJECT					