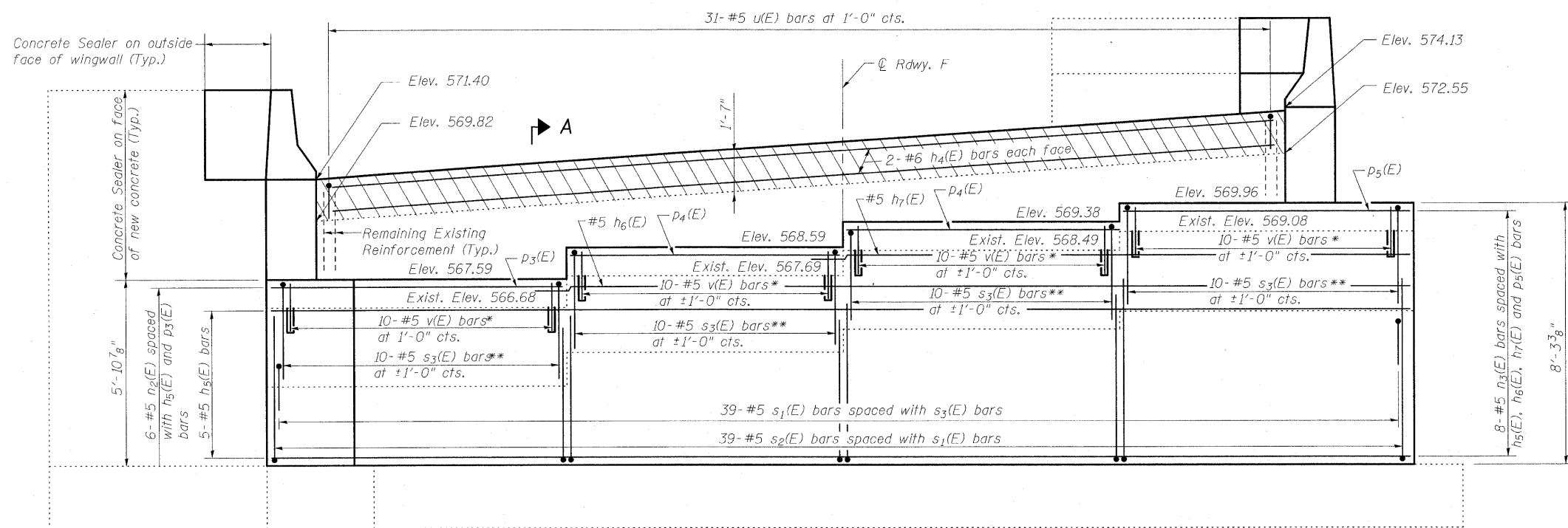
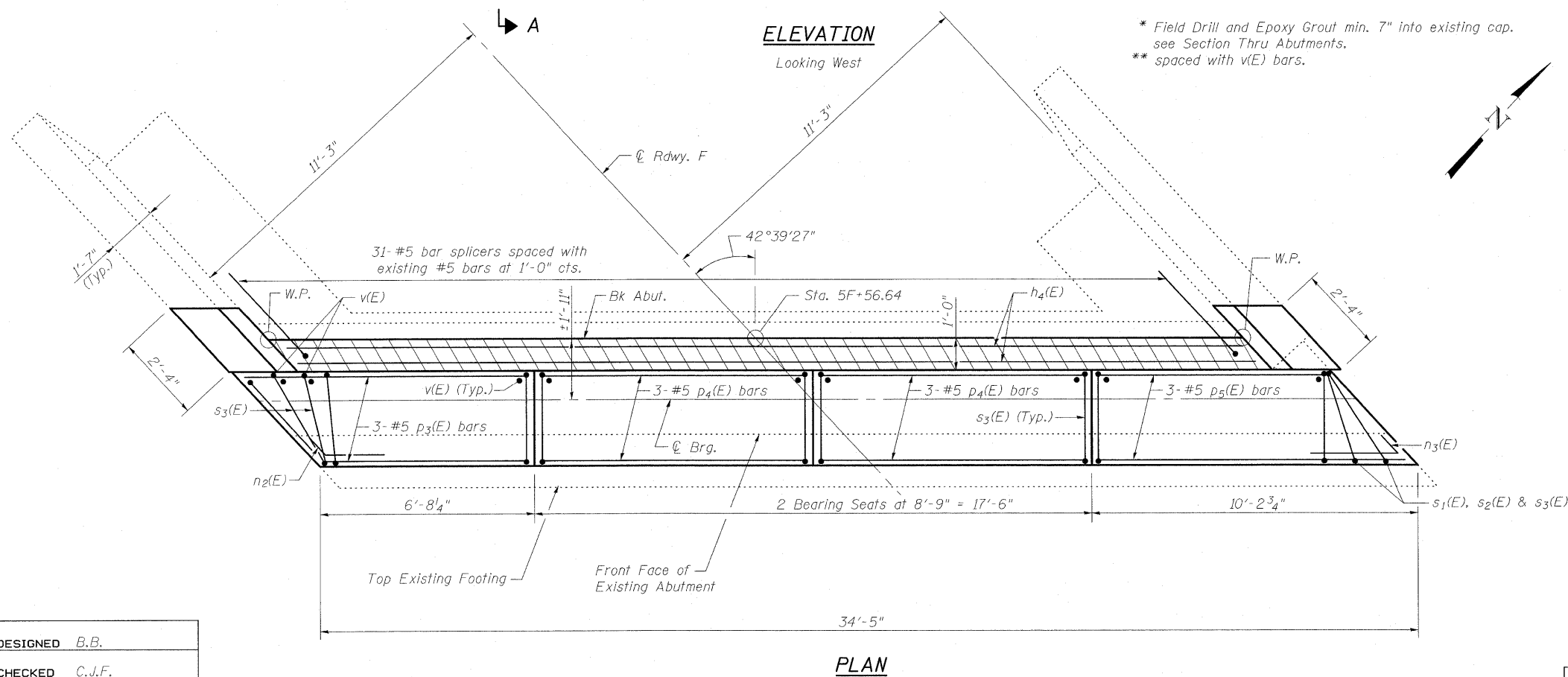


STATE OF ILLINOIS
DEPARTMENT OF TRANSPORTATION



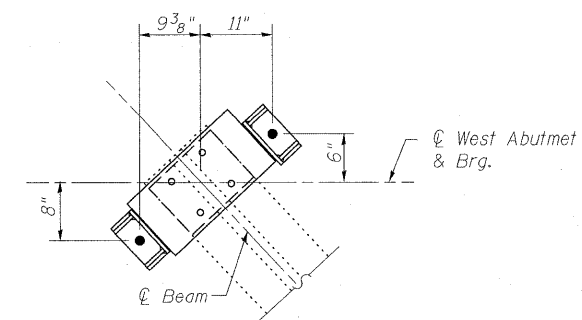
Notes:
Cut p₃(E) and p₅(E) bars to fit with 2" clear.
For Section thru Slope Wall see Section F-F on sheet 3 of 36.
For Section A-A see sheet 22 of 36.
Hatched area quantity of concrete included with Concrete Superstructure.
Space reinforcement to miss Anchor Bolts.
Bars shall be drilled and grouted according to Section 584 of the Standard Specifications.



* Field Drill and Epoxy Grout min. 7" into existing cap. see Section Thru Abutments.
** spaced with v(E) bars.

MINIMUM BAR LAP

#5 bar = 1'-8"



**ANCHOR BOLT DETAIL
WEST ABUTMENT**

**WEST ABUTMENT DETAILS
STRUCTURE NO. 025-0018**

DESIGNED	B.B.
CHECKED	C.J.F.
DRAWN	W.J.S.
CHECKED	C.J.F. & B.B.



**BERNARDIN
LOCHMUELLER &
ASSOCIATES, INC.**

3 Oak Drive
Maryville, IL 62062-6635
Local (618) 298-4665
Fax 618-298-4666

SHEET NO. 21 36 SHEETS	F.A.I. RTE.	SECTION	COUNTY	TOTAL SHEETS	SHEET NO.
	57	(25-3HB)I-3	EFFINGHAM	1416	1402
SN 025-0018			CONTRACT NO. 74296		
FED. ROAD DIST. NO. 7 ILLINOIS FED. AID PROJECT					