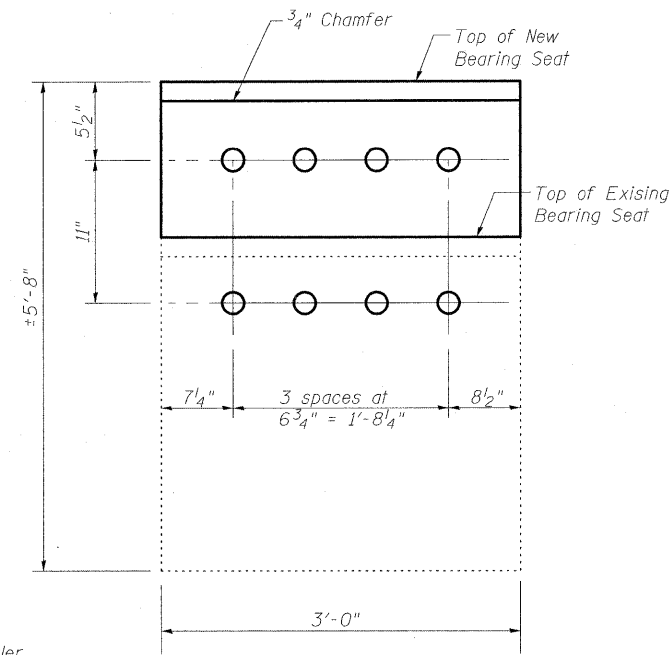
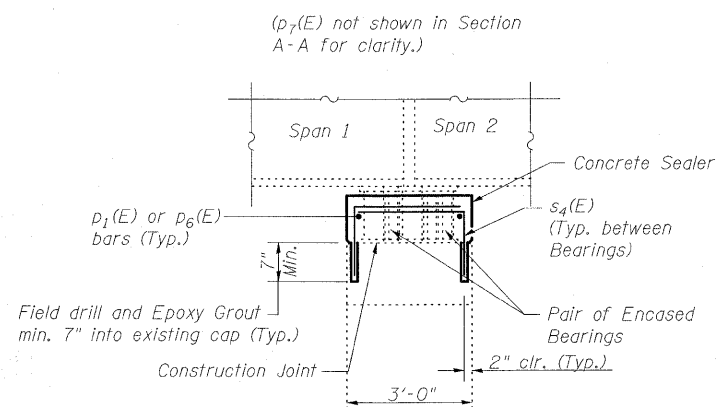
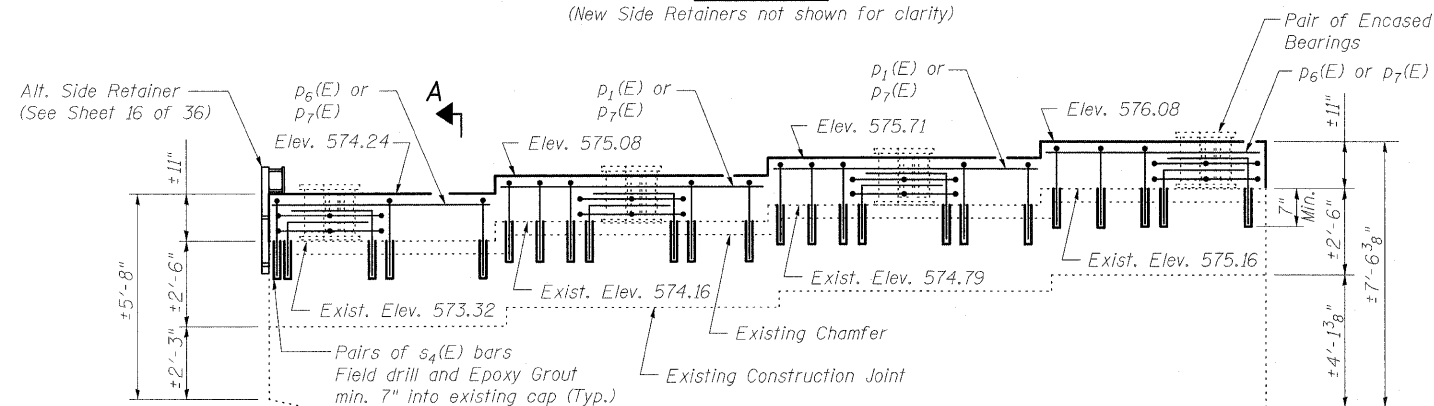
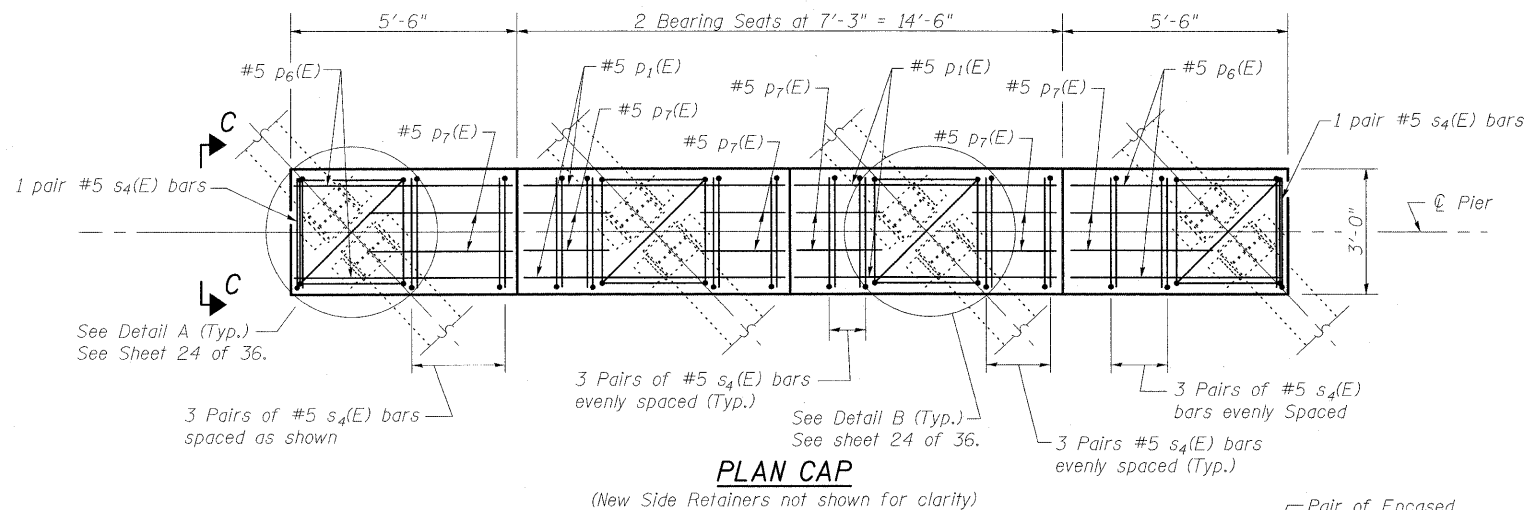


STATE OF ILLINOIS  
DEPARTMENT OF TRANSPORTATION



Notes:  
For Detail A & Detail B see Sheet 24 of 36  
Space reinforcement in cap to miss Anchor Bolts.  
Bars shall be drilled and grouted according to Section 584 of the Standard Specifications.  
Concrete Sealer shall be applied only to exposed surfaces of the new concrete on Pier 1.

DESIGNED	B.B.
CHECKED	C.J.F.
DRAWN	W.J.S.
CHECKED	C.J.F. & B.B.

**ELEVATION**  
(Looking West)

**SECTION A-A**  
(Showing Bearings and Superstructure)

**PIER 1 GENERAL PLAN**  
**STRUCTURE NO. 025-0018**



**BERNARDIN  
LOCHMUELLER &  
ASSOCIATES, INC.**

3 Oak Drive  
Maryville, IL 62442-5635  
Local (618) 298-4665  
Fax 618-298-4666

SHEET NO. 23 36 SHEETS	F.A.I. RTE.	SECTION	COUNTY	TOTAL SHEETS	SHEET NO.
	57	(25-3HB)-3	EFFINGHAM	1416	1404
SN 025-0018			CONTRACT NO. 74296		
FED. ROAD DIST. NO. 7 ILLINOIS FED. AID PROJECT					

1/4/23 AM 4/29/2010 10:25:00 874294.dgn