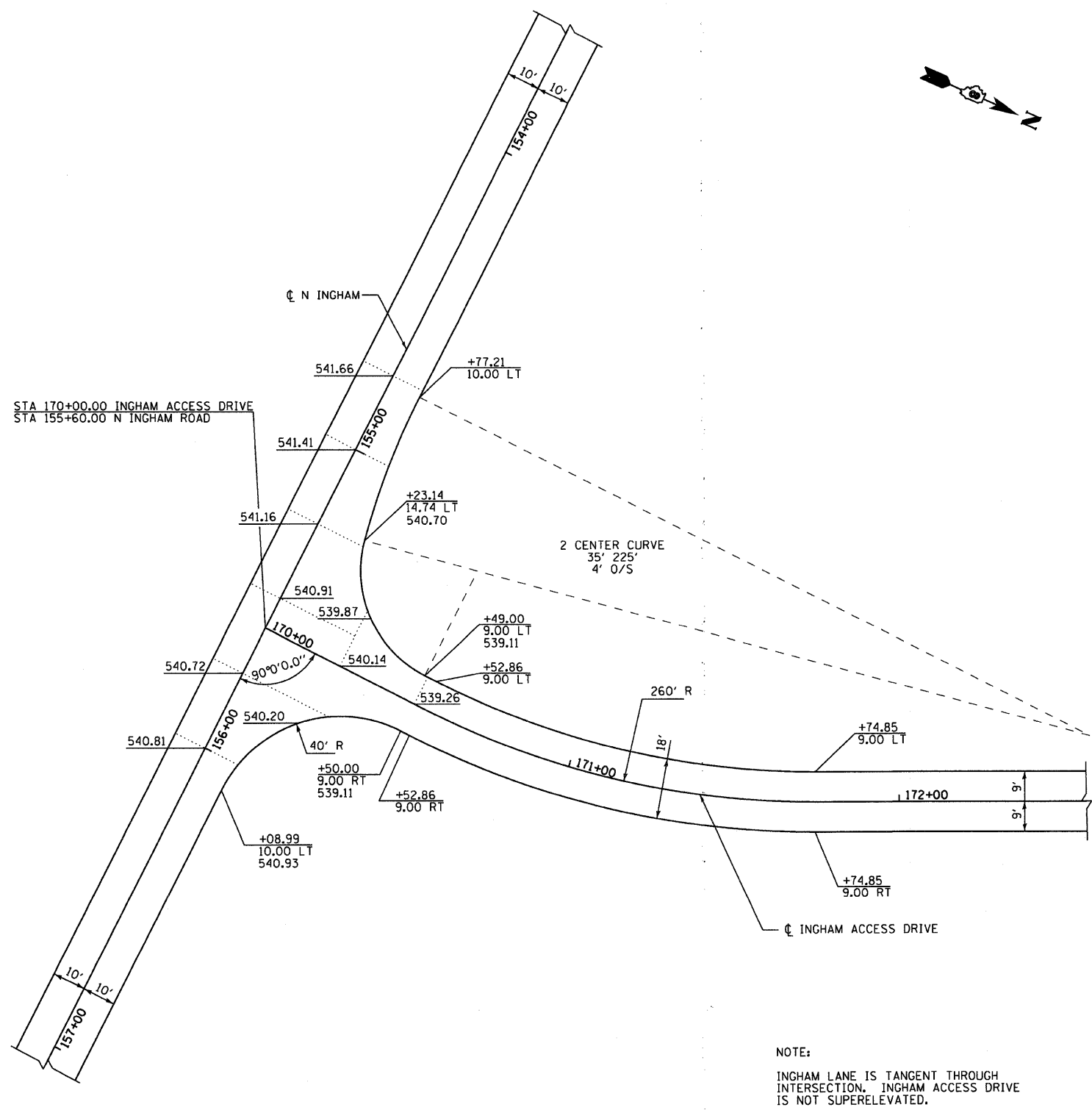
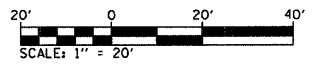
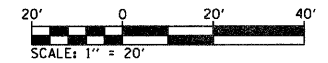


FAP ROUTE	SECTION	COUNTY	TOTAL SHEETS	SHEET NO
310	60-16-1&1B,42-1&1B	MADISON AND JERSEY	481	133
STA		TO STA		
EXISTING CONDITIONS:				
CONTRACT NO. 76318				

PLAN	SURVEYED	DATE
	PLOTTED	
	CHECKED	
	BY	
	NO.	
	PAID FILE NAME	



NOTE:  
 INGHAM LANE IS TANGENT THROUGH INTERSECTION. INGHAM ACCESS DRIVE IS NOT SUPERELEVATED.



INGHAM ACCESS DRIVE

REVISIONS	
NAME	DATE

ILLINOIS DEPARTMENT OF TRANSPORTATION  
**INTERSECTION DETAILS**  
 INGHAM ACCESS DRIVE  
 FAP ROUTE 310  
 SECTION 60-16-1&1B,42-1&1B  
 MADISON AND JERSEY COUNTY  
 DRAWN BY: EMR