

F.A.P. RTE.	SECTION	COUNTY	TOTAL SHEETS	SHEET NO.
809	(133,134)RS-5,135RS-6	ST. CLAIR	762	1

\*762 + 22 = 784

D-98-019-02

STATE OF ILLINOIS  
DEPARTMENT OF TRANSPORTATION  
DIVISION OF HIGHWAYS

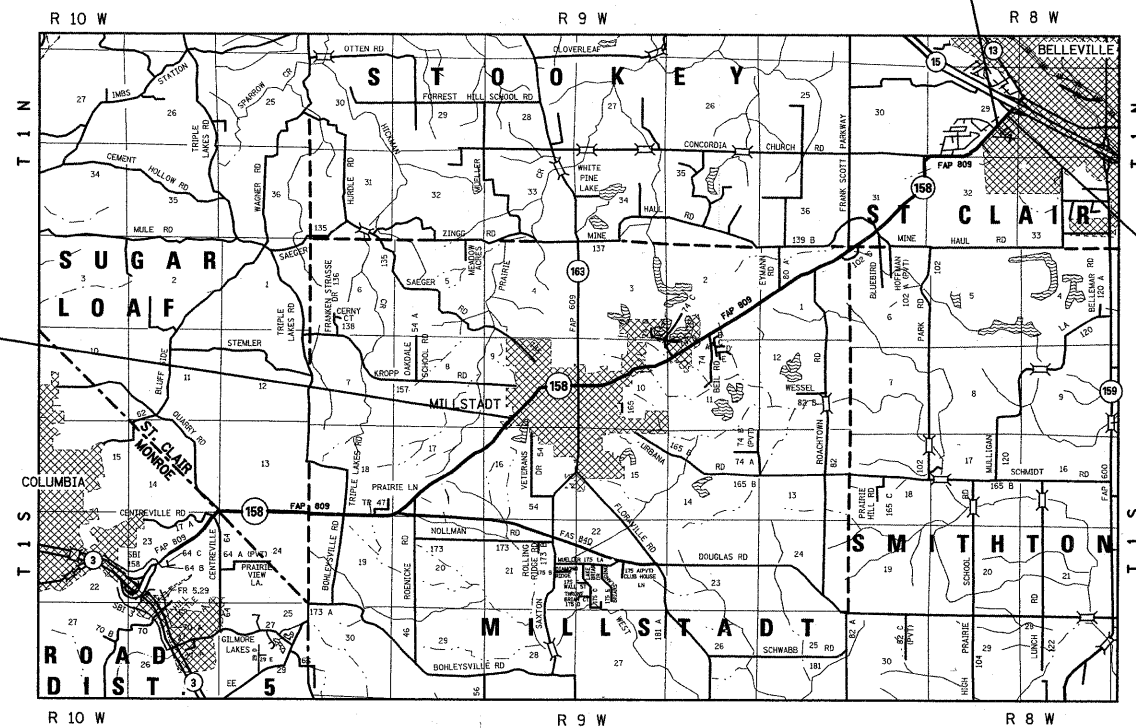
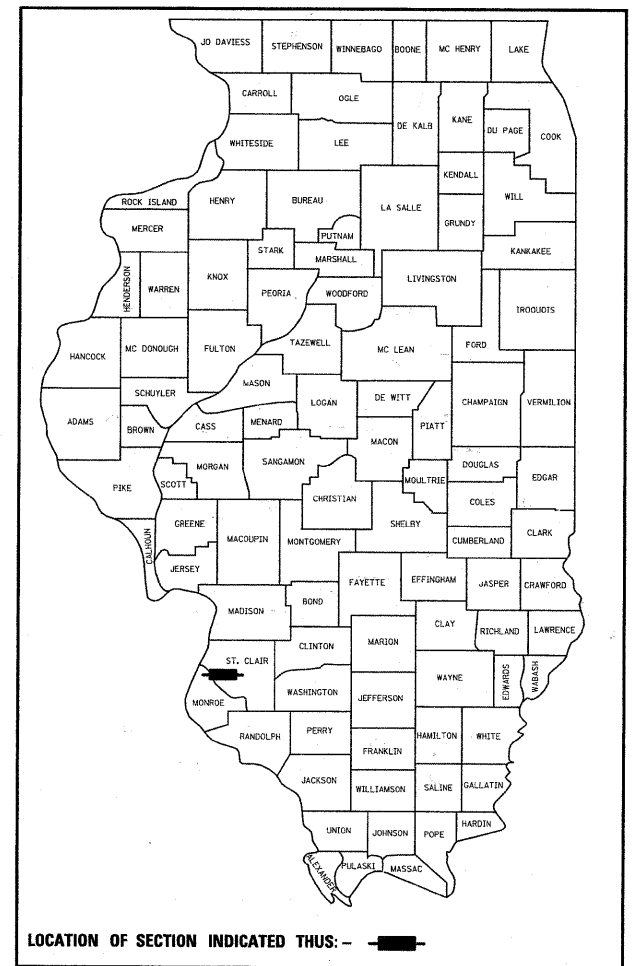
**PROPOSED  
HIGHWAY PLANS**

FAP ROUTE 809 (IL 158)  
SECTION (133, 134)RS-5, 135RS-6  
PROJECT NO. ACF-0809 (004)  
ST. CLAIR COUNTY

C-98-021-07

STA. EQ - 671+89.58 BK  
= 673+72.12 AH

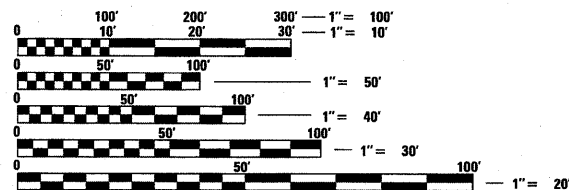
FOR INDEX OF SHEETS, SEE SHEET NO. 2



BEGIN PROJECT  
STA 367+25.70  
LAT: +38.45664  
LONG: -90.10440

END PROJECT  
STA 726+00.00  
LAT: 38.43655  
LONG: -90.17098

MICROFILMED \_\_\_\_\_  
REEL NUMBER \_\_\_\_\_  
AWARDED \_\_\_\_\_  
RESIDENT ENGINEER \_\_\_\_\_  
AS BUILT CHANGES WERE MADE  
ON THE FOLLOWING SHEETS



FULL SIZE PLANS HAVE BEEN PREPARED USING STANDARD ENGINEERING SCALES. REDUCED SIZED PLANS WILL NOT CONFORM TO STANDARD SCALES. IN MAKING MEASUREMENTS ON REDUCED PLANS, THE ABOVE SCALES MAY BE USED.

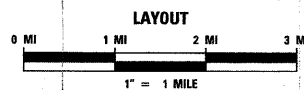
J.U.L.I.E.  
JOINT UTILITY LOCATION INFORMATION FOR EXCAVATION  
1-800-892-0123

CONTRACT NO. 76A47

DESIGN DESIGNATION  
MINOR ARTERIAL  
OTHER PRINCIPAL ARTERIAL  
CLASS III TRUCK ROUTE

CURRENT 20YR PROJECTED  
ADT 11700 (2003) ADT 19200 (2023)  
SU - 6.4%  
MU - 3.0%

SUGAR LOAF, MILLSTADT AND ST. CLAIR TOWNSHIPS - ST. CLAIR COUNTY



GROSS LENGTH = 35,691.76 FT = 6.76 MILES  
GROSS LENGTH = 35,691.76 FT = 6.76 MILES

STATE OF ILLINOIS  
DEPARTMENT OF TRANSPORTATION  
DIVISION OF HIGHWAYS

SUBMITTED Aug 12, 2009  
Meg C. Hemi  
DEPUTY DIRECTOR OF HIGHWAYS  
REGION FIVE ENGINEER

October 2, 2009  
Charles J. Ingersoll  
ENGINEER OF DESIGN AND ENVIRONMENT

October 2, 2009  
Christine M. Reed  
DIRECTOR, DIVISION OF HIGHWAYS

**PRINTED BY THE AUTHORITY  
OF THE STATE OF ILLINOIS**

PROJECT ENGINEER: PATTI LEBEAU (618) 346-3179  
SQUAD LEADER: CHERYL KEPLAR (618) 346-3186