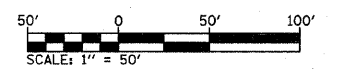
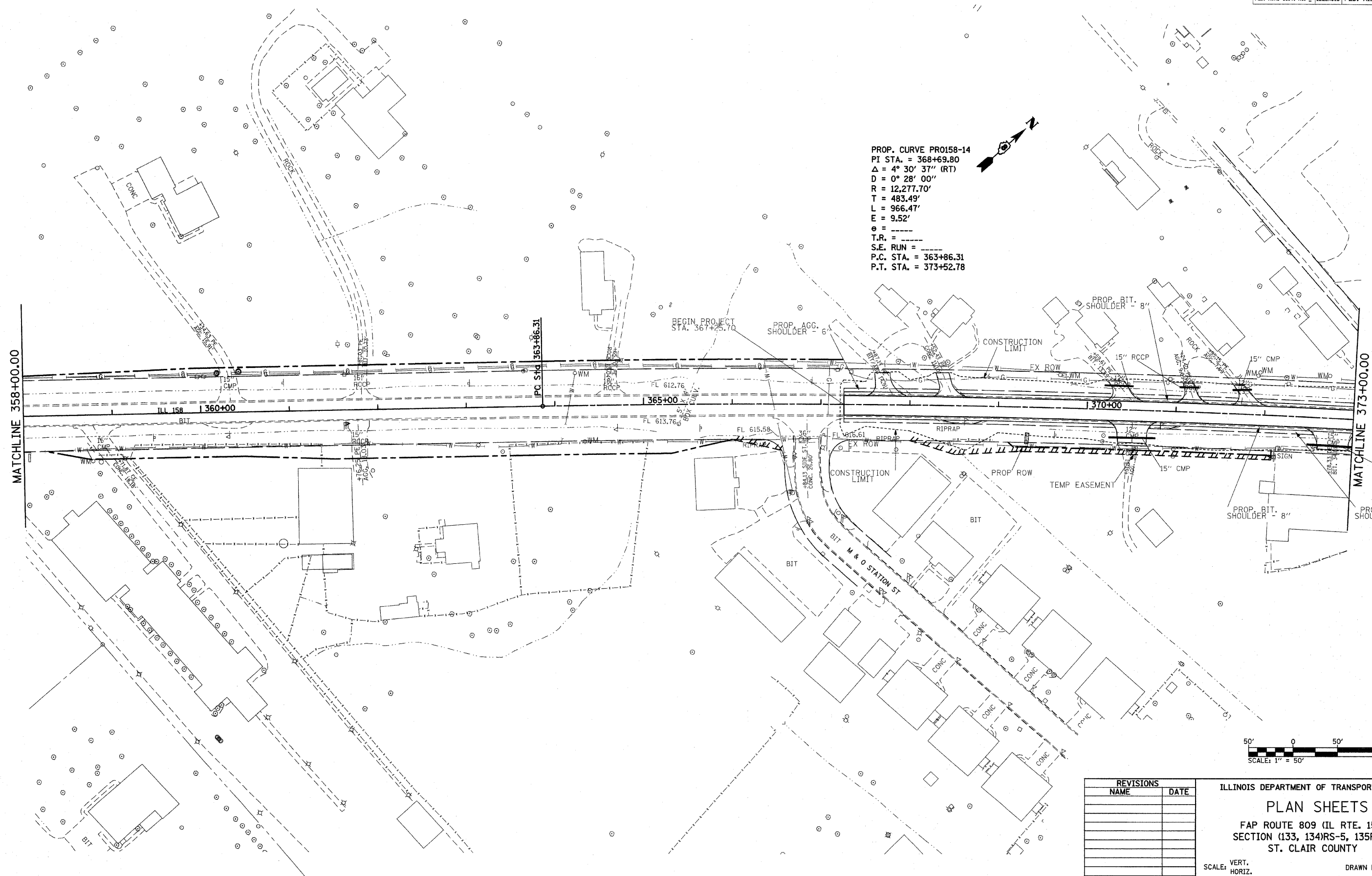
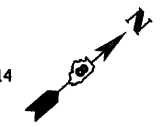


F.A.P. RTE.	SECTION	COUNTY	TOTAL SHEETS	SHEET NO.
809	(133,134RS-5,135RS-6)	ST. CLAIR	762	84
STA. 367+25.70		TO STA. 373+00		
FED. ROAD DIST. NO. ILLINOIS		FED. AID PROJECT		

PROP. CURVE PR0158-14
 PI STA. = 368+69.80
 $\Delta = 4^\circ 30' 37''$ (RT)
 $D = 0^\circ 28' 00''$
 $R = 12,277.70'$
 $T = 483.49'$
 $L = 966.47'$
 $E = 9.52'$
 $e =$
 $T.R. =$
 $S.E. RUN =$
 $P.C. STA. = 363+86.31$
 $P.T. STA. = 373+52.78$



PLOT DATE = #DATE#
 FILE NAME = #FILE#
 PLOT SCALE = #SCALE#
 USER NAME = #USER#

REVISIONS	
NAME	DATE

ILLINOIS DEPARTMENT OF TRANSPORTATION
PLAN SHEETS
 FAP ROUTE 809 (IL RTE. 158)
 SECTION (133, 134)RS-5, 135RS-6
 ST. CLAIR COUNTY

SCALE: VERT. _____
 HORIZ. _____
 DATE _____

DRAWN BY _____
 CHECKED BY _____